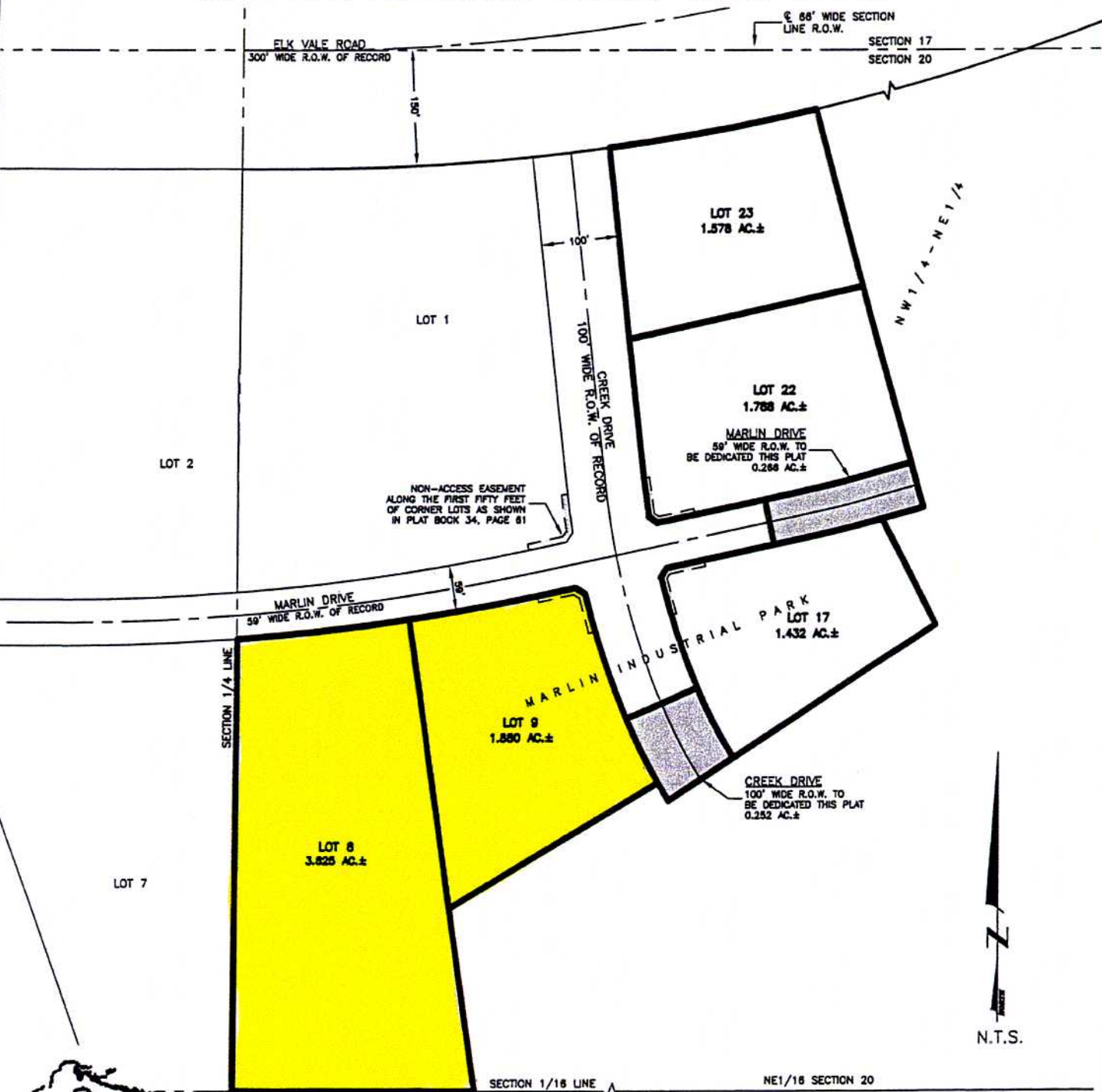


PLAT OF LOTS 8, 9, 17, 22, AND 23 MARLIN INDUSTRIAL PARK

(formerly a portion of the NW1/4 of the NE1/4 of Section 20)
LOCATED IN THE NW1/4 OF THE NE1/4 OF SECTION 20,
T1N, R8E, BHM
RAPID CITY, PENNINGTON COUNTY, SOUTH DAKOTA



CITY HALL 1903

Renner & Associates, LLC.

616 Sixth St. * Rapid City, SD 57701 * 605/721-7310
FAX: 605/721-7313 * E-MAIL: Gary@RennerAssoc.com
* Spearfish 605/717-0016 *