

TOPOGRAPHIC MAP OF  
LOT A & LOT B OF LOT 4R OF HIGH SHERIDAN RANCH SUBDIVISION  
(FORMERLY LOT 4R OF HIGH SHERIDAN RANCH SUBDIVISION)  
LOCATED IN SECTION 35, T1N. R6E B.H.M.  
PENNINGTON COUNTY, SOUTH DAKOTA

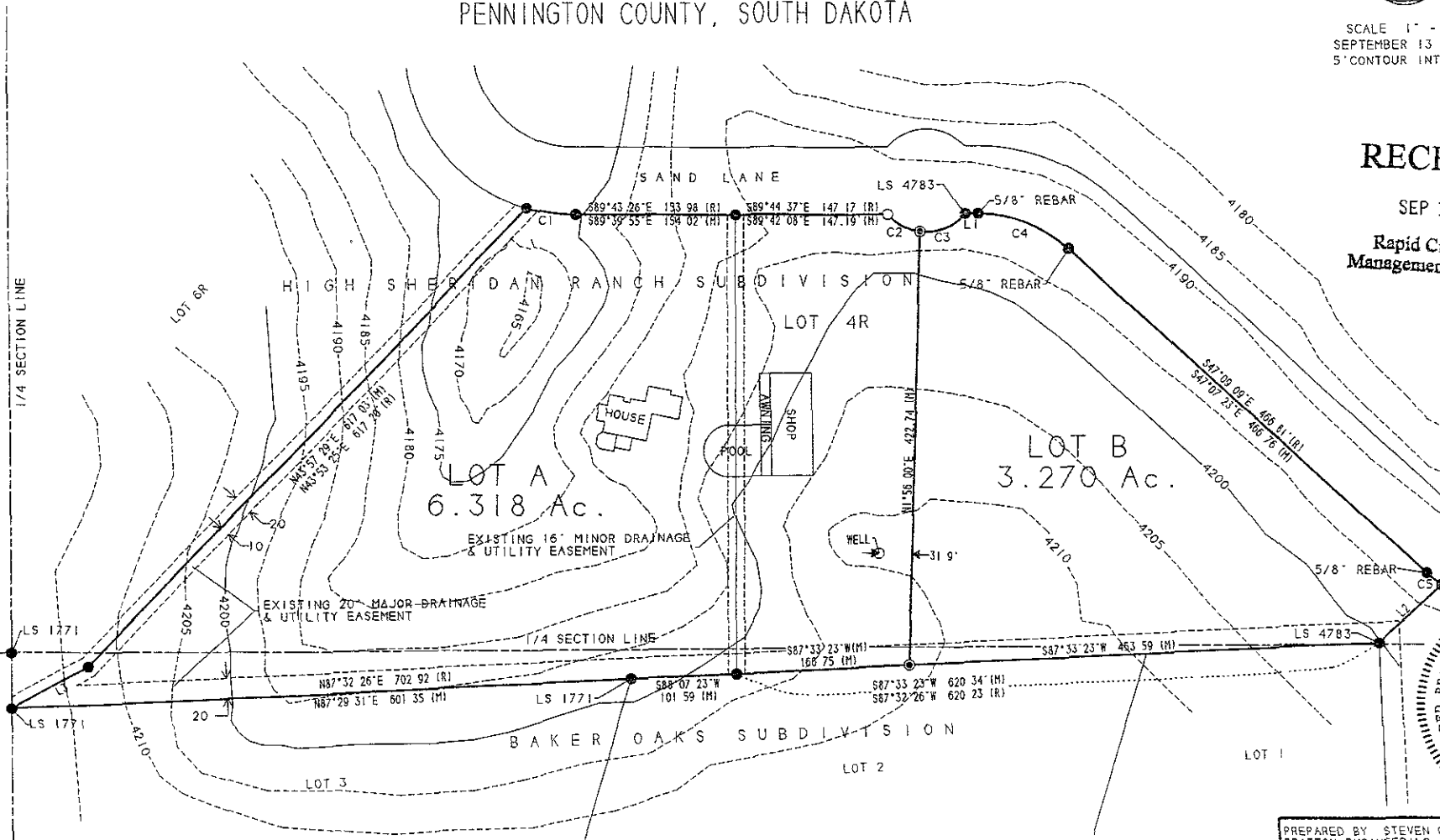


SCALE 1" = 100'  
SEPTEMBER 13 2007  
5' CONTOUR INTERVAL

RECEIVED

SEP 17 2007

Rapid City Growth  
Management Department



PREPARED BY STEVEN O THINGELSTAD  
BRITTON ENGINEERING & LAND SURVEYING INC  
8035 BLACK HAWK ROAD SUITE #5 BLACK HAWK  
SOUTH DAKOTA 57718 TELEPHONE (605) 716-7988