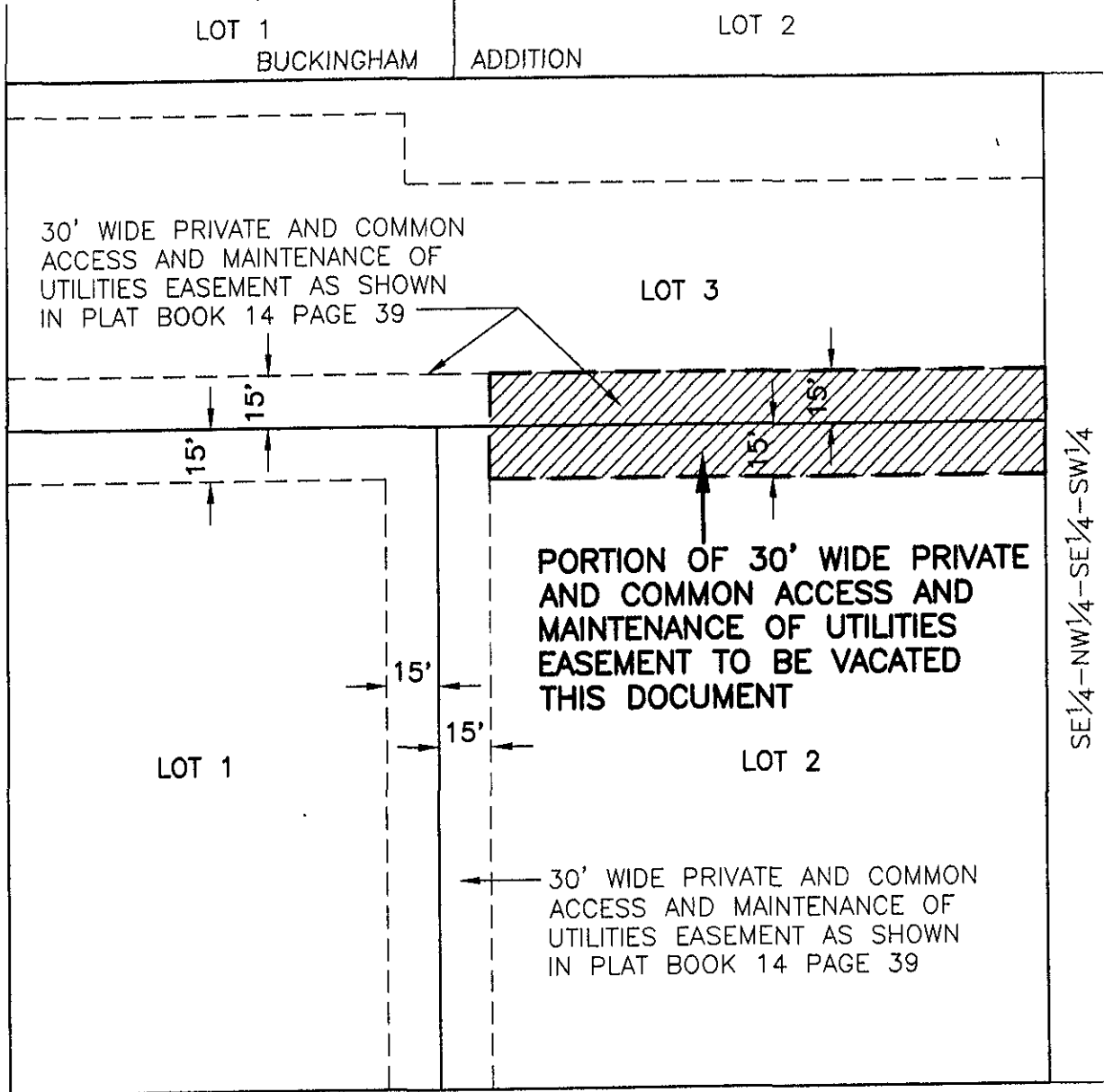


VACATION OF A PORTION OF THE 30' WIDE PRIVATE AND COMMON ACCESS AND MAINTENANCE OF UTILITIES EASEMENT

LOTS 2 AND 3 OF TRACT C

LOCATED IN THE SE¹/₄ OF THE SE¹/₄,
SECTION 31, T2N, R8E, B.H.M.,
RAPID CITY, PENNINGTON COUNTY, SOUTH DAKOTA



NORTH CHERRY AVE.
80' R.O.W. OF RECORD

SE¹/₄-NW¹/₄-SE¹/₄-SW¹/₄

EAST CHICAGO STREET

80' R.O.W. OF RECORD

RECEIVED

SEP 0 2007

Rapid City Growth
Management Department

AUGUST 30, 2007



SCALE: 1" = 50'

