

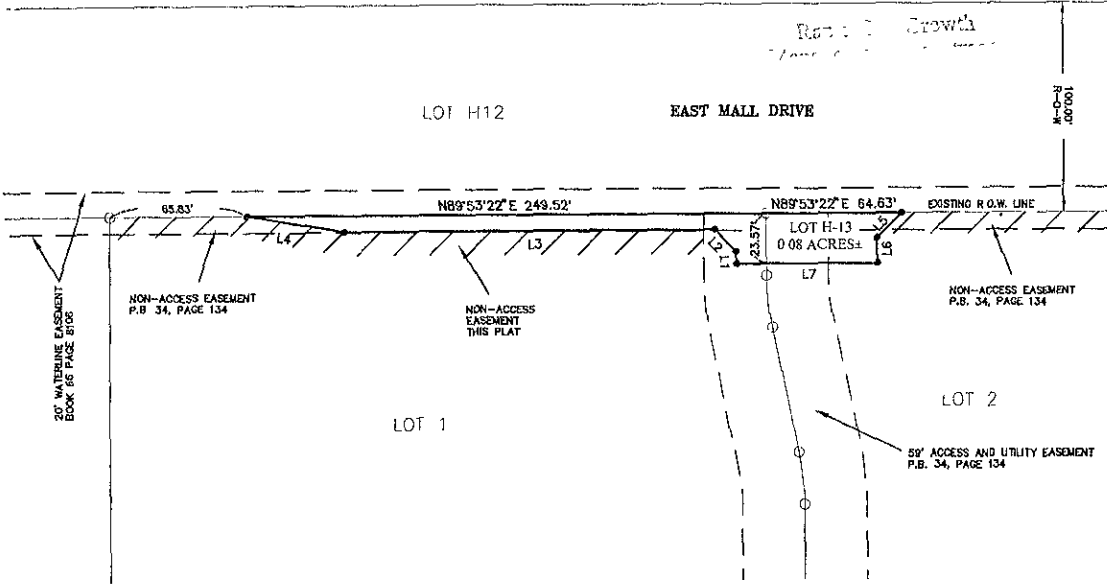
07SR045

PLAT OF LOT H-13 OF LOTS 1 AND 2,
 FOREFATHER FLATS SUBDIVISION,

LOCATED IN THE SOUTHWEST QUARTER OF SECTION 28 IN TOWNSHIP 2 NORTH OF RANGE 8 EAST
 OF THE BLACK HILLS MERIDIAN, IN THE CITY OF RAPID CITY, PENNINGTON COUNTY, SOUTH DAKOTA.

RECEIVED

AUG 1 2007



LINE	BEARING	DISTANCE
L1	N 00°01'50\"/>	
L2	N 89°53'22\"/>	
L3	S 89°53'10\"/>	
L4	N 81°22'50\"/>	
L5	S 45°00'00\"/>	
L6	S 00°00'00\"/>	
L7	S 89°53'30\"/>	

NOTES:

1. LOT 1 LESS LOT H-13=1.31 ACRES±
 LOT 2 LESS LOT H-13=1.55 ACRES±
2. LOTS 1 & 2 RECORDED IN PLAT BOOK 34, PAGE 134.
3. LOT H12 RECORDED IN HIGHWAY PLAT BOOK 11, PAGE 9.

LEGEND

- DENOTES SET 5/8\"/>

