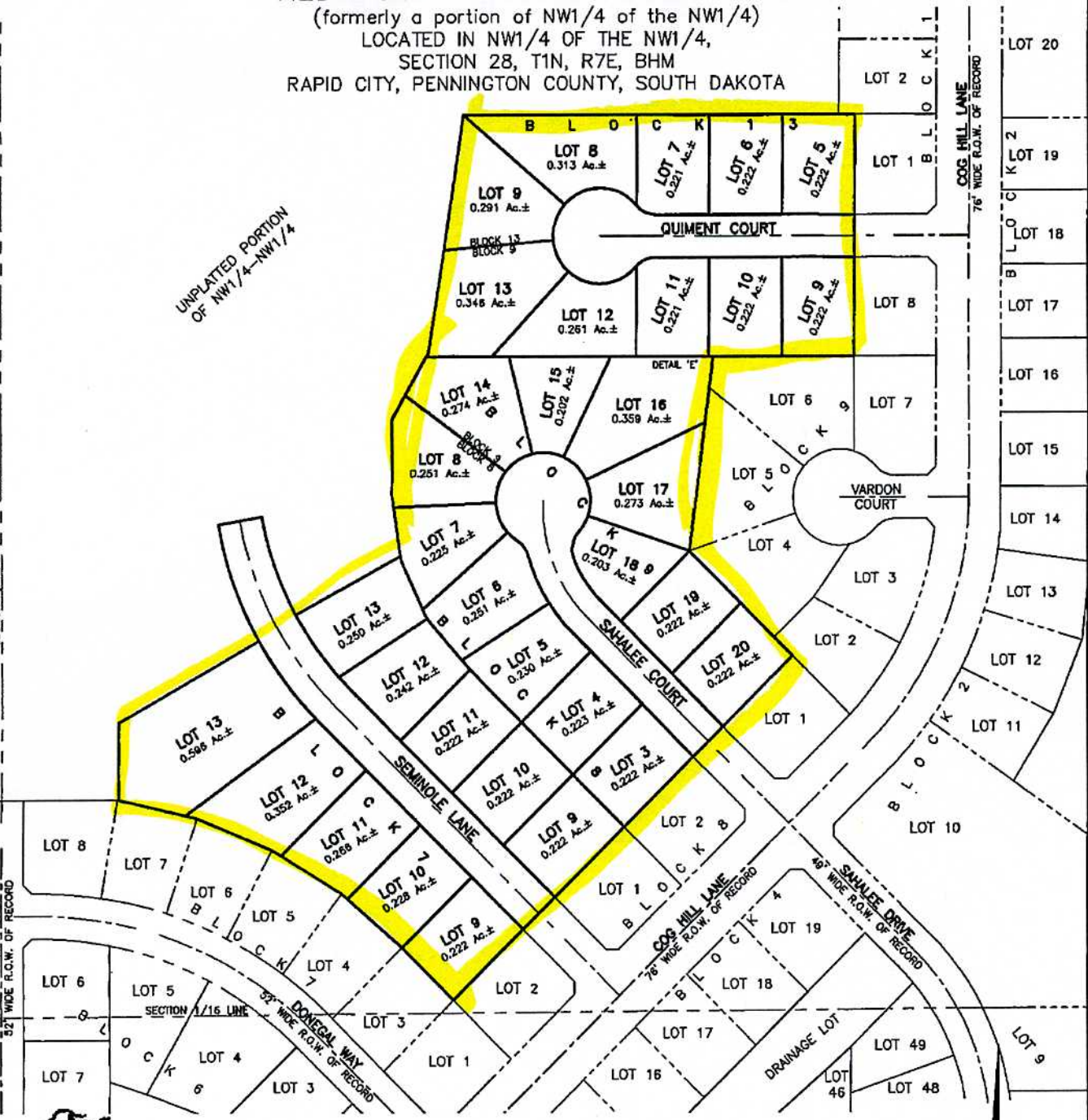


**LOTS 9 THRU 13 OF BLOCK 7, LOTS 3 THRU 13 OF BLOCK 8,  
 LOTS 9 THRU 20 OF BLOCK 9, AND LOTS 5 THRU 9 OF BLOCK 13,  
 AND LOTS 5 THRU 9 OF BLOCK 13,  
 RED ROCK MEADOWS SUBDIVISION**

(formerly a portion of NW1/4 of the NW1/4)  
 LOCATED IN NW1/4 OF THE NW1/4,  
 SECTION 28, T1N, R7E, BHM  
 RAPID CITY, PENNINGTON COUNTY, SOUTH DAKOTA



**Renner & Associates, LLC.**

616 Sixth St. \* Rapid City, SD 57701 \* 605/721-7310  
 FAX: 605/721-7313 \* E-MAIL: Gary@RennerAssoc.com  
 \* Spearfish 605/717-0016 \*

N.T.S.

AUGUST 23, 2007