

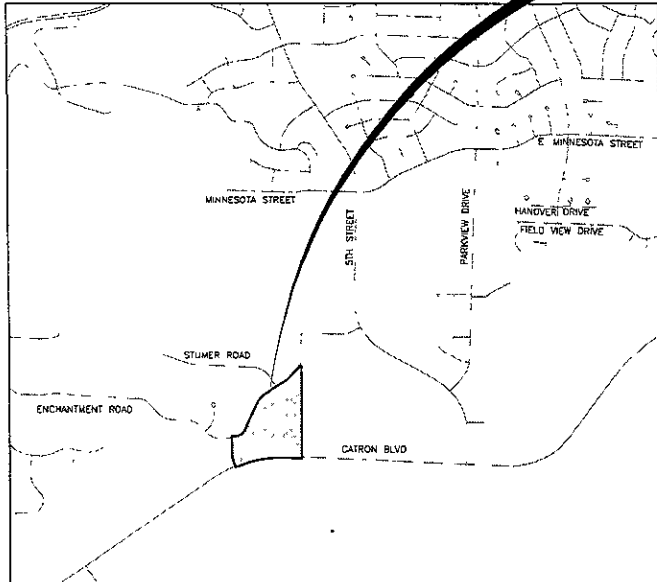
EAGLE RIDGE PRD AMENDMENT RAPID CITY, SOUTH DAKOTA

PROJECT NO. 07.1369.001

INDEX OF SHEETS

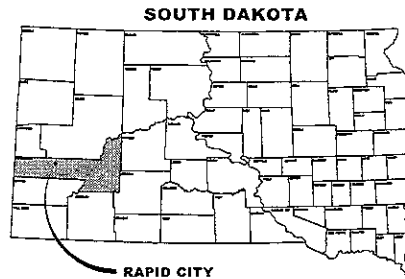
- 1 COVER SHEET
- 2 OVERALL GRADING PLAN
- 3 GRADING PLAN
- 4 STREET CENTERLINE PROFILE
- 5 SANITARY SEWER PLAN
- 6 WATER MAIN PLAN
- 7 STORM SEWER PLAN
- 8 STORM SEWER PLAN

**PROJECT
LOCATION**



PROJECT LOCATION MAP

NOT TO SCALE



SOUTH DAKOTA

RAPID CITY

RECEIVED

SEP 17 2007

Rapid City Growth
Management Department

**PRELIMINARY
NOT FOR CONSTRUCTION**



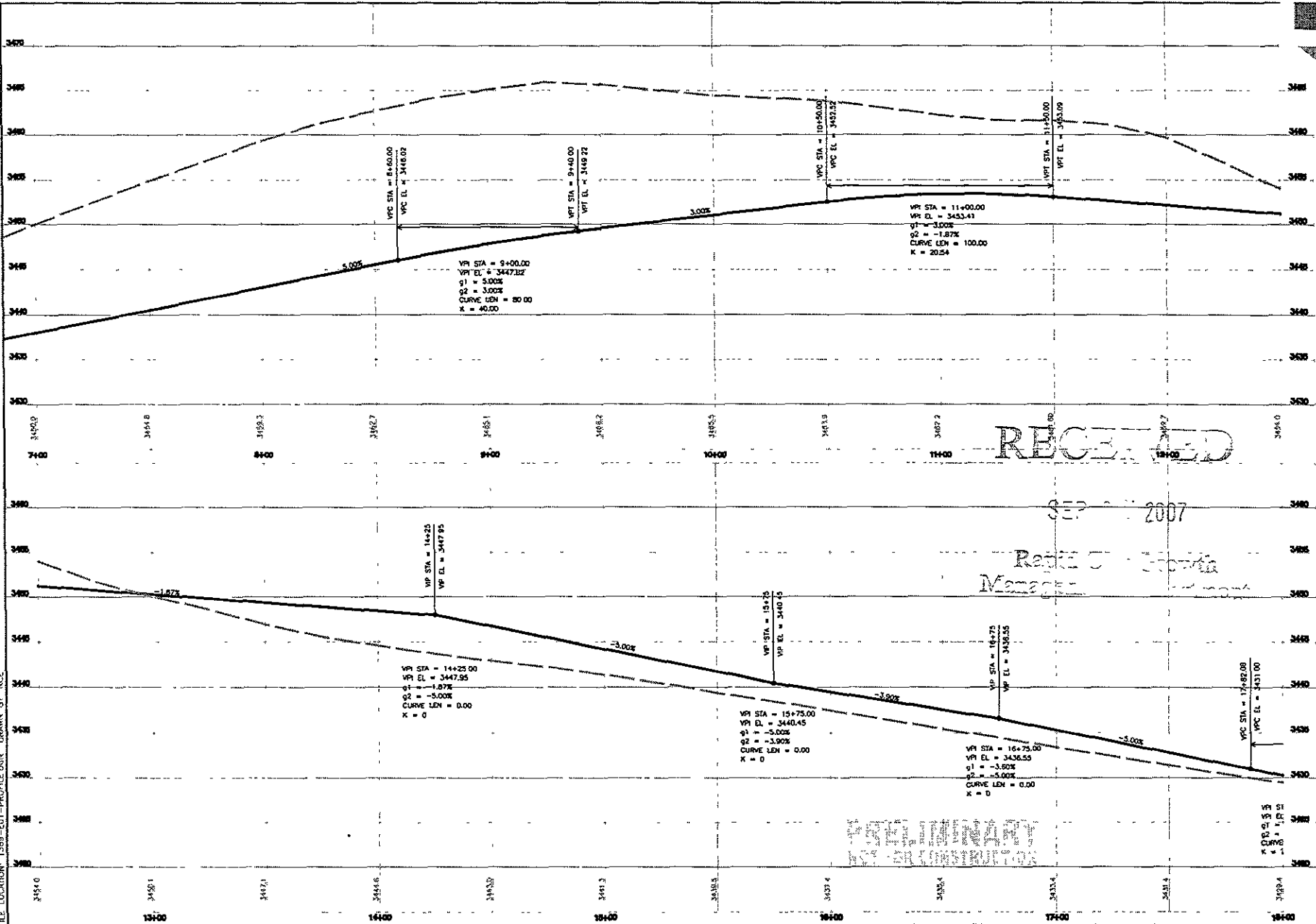
EAGLE RIDGE PRD AMENDMENT

JOB NUMBER 07.1369.001
DATE 08/07/07

REVISIONS	
NO.	DESCRIPTION

TITLE
COVER SHEET
SHEET
1 OF 8

CLIFFRONT
DESIGN, INC.
ARCHITECTURE | ENGINEERING
| SURVEYING
517 7th Street Rapid City SD 57701
ph 605.342.9470 fax 605.342.2377
www.cliffront.biz



RECEIVED

SEP 27 2007

Rapid City, South Dakota
 Manager

STA. 6+00 - CL TO 8+88.78 CL
INSTALL 289 LF OF 8" PVC WATERMAIN.
(PHASE II)

STA. 6+27.28 - CL
INSTALL 8X8X4" TEE (PHASE II)

STA. 6+27.28 - CL TO 98.14' L
INSTALL 98 LF OF 4" PVC WATER SERVICE. (PHASE II)

STA. 6+27.28 - 10.69' L TO 30.69' L
ENCASE WATER MAIN - 20 LF

STA. 6+27.28 - 98.14' L
INSTALL 4" 90° BEND (PHASE II)

STA. 6+27.28 - 98.14' L TO 6+49.03 - 98.14' L
INSTALL 22 LF OF 4" PVC WATER SERVICE. (PHASE II)

STA. 6+33.05 - CL
INSTALL 8X8X6" TEE. (PHASE II)

STA. 6+33.05 - CL TO 15.44' L
INSTALL 15 LF OF 6" PVC WATERMAIN. (PHASE II)

STA. 6+33.05 - 15.44' L
INSTALL FIRE HYDRANT W/ AUX VALVE (PHASE II)

STA. 6+38.05 - CL
INSTALL 8" GATE VALVE (PHASE II)

STA. 6+54.18 - CL TO 6+74.18 - CL
INSTALL 4" GATE VALVE. (PHASE II)

STA. 6+54.18 - CL TO 6+74.18 - CL
ENCASE WATER MAIN - 20 LF

STA. 7+10.24 TO 7+30.24 - CL
ENCASE WATER MAIN - 20 LF

STA. 7+87.43 - CL
INSTALL 8X8X4" TEE. (PHASE II)

STA. 7+87.43 - CL TO 37.33' L
INSTALL 37 LF OF 4" PVC WATER SERVICE.
(PHASE II)

STA. 7+87.43 - 37.33' L
INSTALL 4" GATE VALVE. (PHASE II)

STA. 8+40.77 - CL
INSTALL 8" - 45° BEND (PHASE II)

STA. 8+58.82 - CL
INSTALL 8" - 45° BEND. (PHASE II)

STA. 8+88.78 - CL TO 11+00 - 10' R
INSTALL 211 LF OF 6" PVC WATER MAIN.
(PHASE I)

STA. 8+88.78 - CL
INSTALL 8X8X6" TEE, PLUG END. (PHASE I)

STA. 8+88.78 - CL TO 5' R
INSTALL 5 LF OF 6" PVC WATERMAIN. (PHASE I)

NOTE:

INSTALL WATER MAIN UP TO
FIRE HYDRANT @ 8+88.78 IN
PHASE I.

STA. 8+88.78 - 5' R
INSTALL FIRE HYDRANT W/ AUX VALVE.
(PHASE I)

STA. 8+92.84 - CL
INSTALL 8" - 11.25° BEND.
(PHASE I)

STA. 8+96.84 - CL
INSTALL 8" GATE VALVE
(PHASE I)

STA. 10+13.74 - 10' R
INSTALL 8" - 45° BEND.
(PHASE I)

STA. 10+61.02 - 10' R
INSTALL 8X8X4" TEE.
(PHASE I)

STA. 10+61.02 - 10' R TO 7.54' L
INSTALL 18 LF OF 4" PVC WATER SERVICE
(PHASE I)

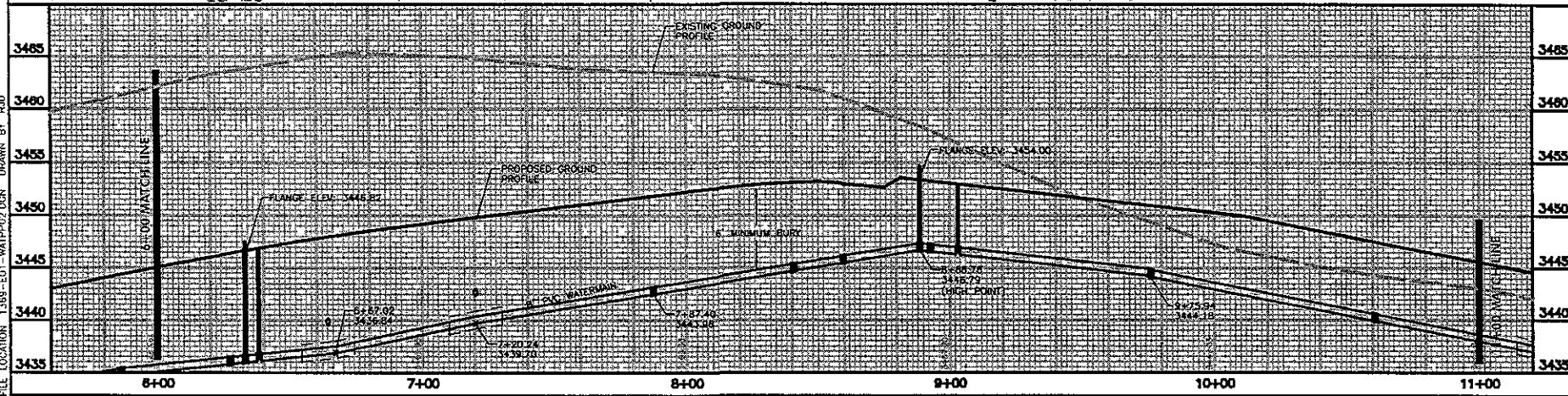
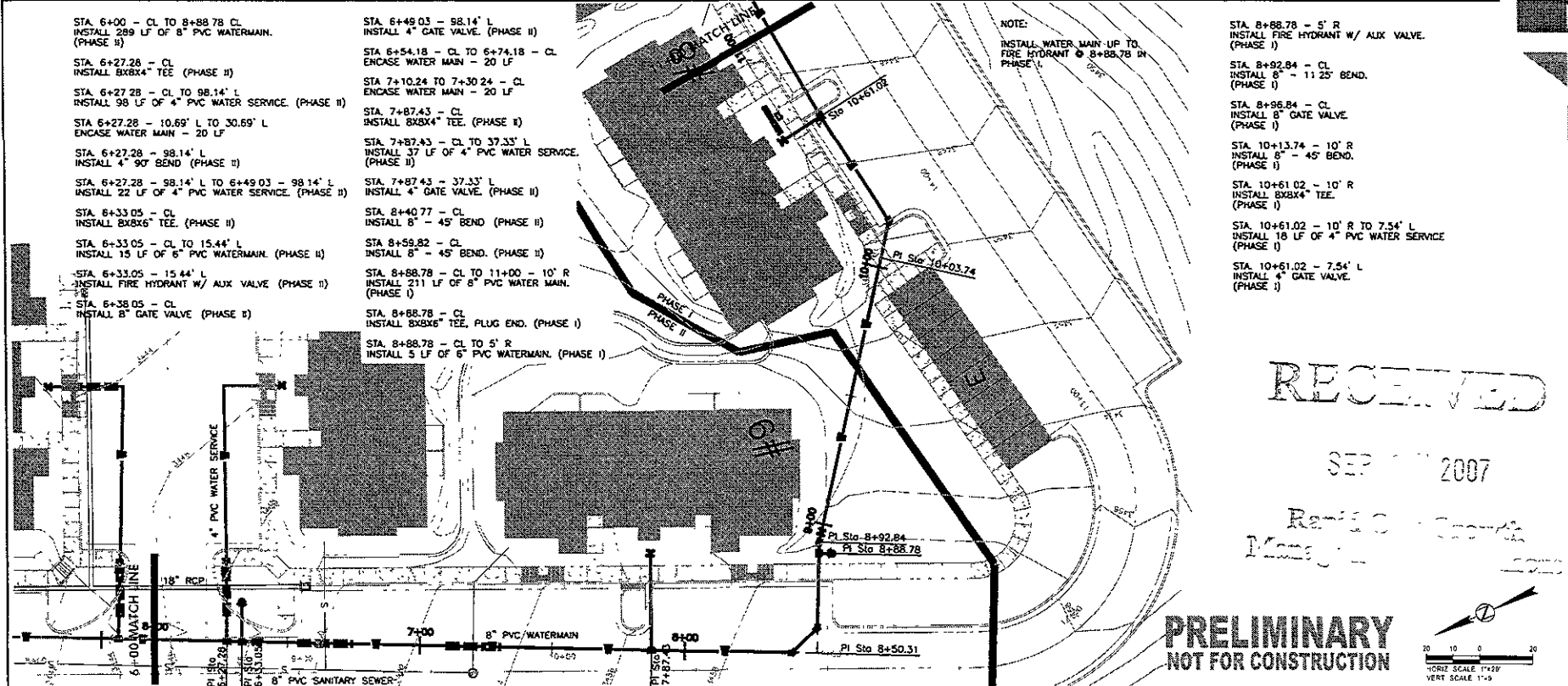
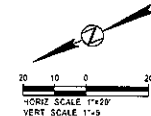
STA. 10+61.02 - 7.54' L
INSTALL 4" GATE VALVE.
(PHASE I)

RECEIVED

SEP 11 2007

Rapid City Growth
Management

PRELIMINARY
NOT FOR CONSTRUCTION



C-J FRONT DESIGN INC

ARCHITECTURE | ENGINEERING | SURVEYING

517 7th street rapid city sd 57701
ph 605 342 9470 fax 605 342 2377
www.cjfront.biz

RAPID CITY, SOUTH DAKOTA

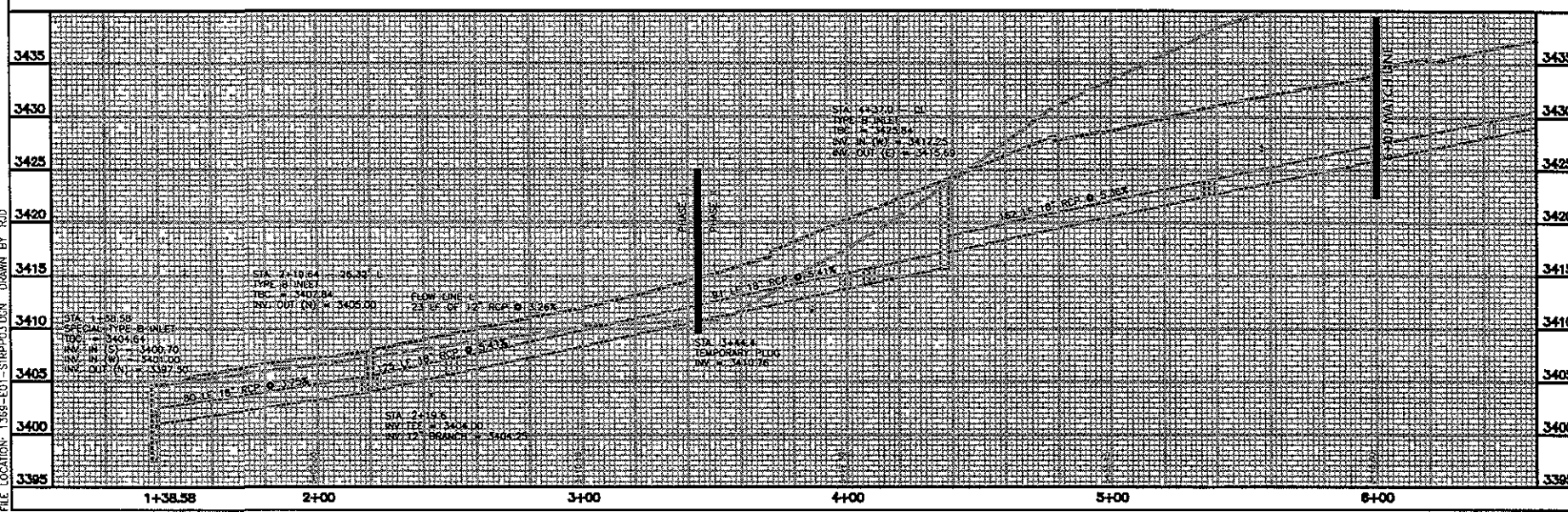
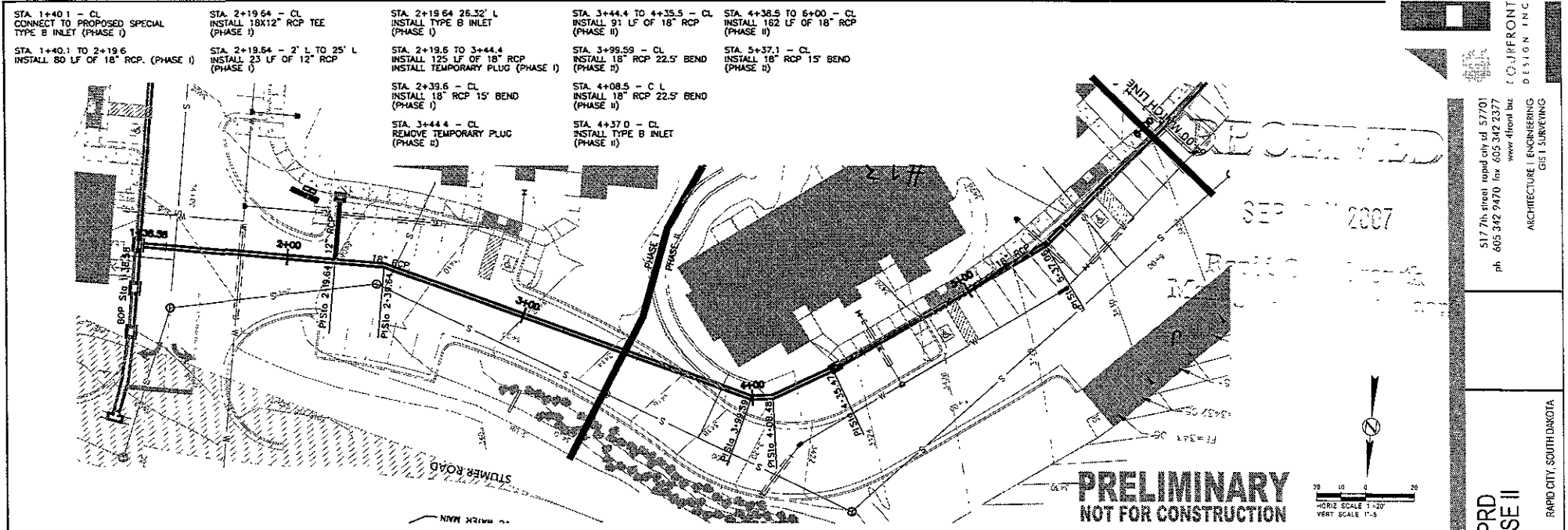
EAGLE RIDGE PRD
PHASE 1

JOB NUMBER: 071360 001
DATE: 08/07/07

REVISIONS

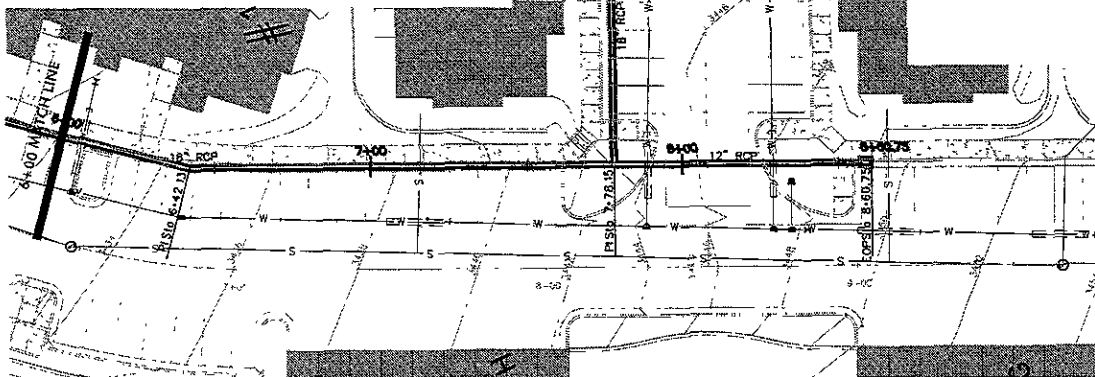
TITLE
WATER
PLAN AND PROFILE
STA 6+00 TO 11+00

SHEET
6 OF 8



CO. JFFRONT
 DESIGN INC.
 ARCHITECTURE, ENGINEERING
 GIS SURVEYING
 517 7th street rapid city sd 57701
 ph 605 342 9470 fax 605 342 2377
 www.jffront.biz
 EAGLE RIDGE PRD
 PHASE 1 & PHASE II
 JOB NUMBER 071369.001
 DATE 09/07/07
 RAPID CITY, SOUTH DAKOTA
 SHEET
 7 OF 8

- STA. 6+00 TO 7+81 - CL
INSTALL 181 LF OF 18" RCP
- STA. 6+42.1 - CL
INSTALL 18" RCP 15' BEND
- STA. 7+78.15 - CL
INSTALL 18X18" RCP TEE
- STA. 7+78.15 - 2' L TO 111' L
INSTALL 109 LF OF 18" RCP
- STA. 7+78.15 - 112.34' L
INSTALL TYPE B INLET
- STA. 7+81.1 - CL
INSTALL 18X12" RCP REDUCER
- STA. 7+81.1 TO 8+57.3 - CL
INSTALL 76 LF OF 12" RCP
- STA. 8+58.75 - CL
INSTALL TYPE B INLET

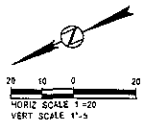


RECEIVED

SEP 11 2007

STORM SEWER
PLAN AND PROFILE
STA 6+00 TO 8+60.75

PRELIMINARY
NOT FOR CONSTRUCTION



517 7th street rapid city sd 57701
ph 605.342.9470 fax 605.342.2377
www.dfront.biz

ARCHITECTURE | ENGINEERING
COST | SURVEYING

DFRONT
DESIGN | INC

EAGLE RIDGE PRD
PHASE 1

RAPID CITY, SOUTH DAKOTA

JOB NUMBER OF 1385.001
DATE 08/31/07

STORM SEWER
PLAN AND PROFILE
STA 6+00 TO 8+60.75

SHEET
8 OF 8

