

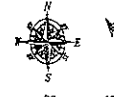
LEGEND

- ⊙ Secondary Sewer Manhole (unless noted)
- ⊙ Fire Hydrant
- M Water Valve
- ⊙ UTILITY Pole
- City Wire
- Wood Privacy Fence
- x- Wooden Wire Fence
- x-x- Chain Link Fence
- x-x-x- Overhead Utility Line
- x-x-x- Sanitary Sewer Line
- x-x-x- Water Main
- Found Survey Monument, LS 6699, or as noted
- ⊙ Set Rebar with cap marked "RW Fisk 6565"
- Δ Control Point

SURVEYOR'S NOTES

Utilities shown are from visual inspection, sketches provided by individual service providers and Utility Locates performed by South Dakota One Call, Ticket Number 071130253. The actual location of utilities and service lines may vary from the information shown hereon. We assume no liability for utilities and services that are not marked or are incorrectly defined by utility locators.

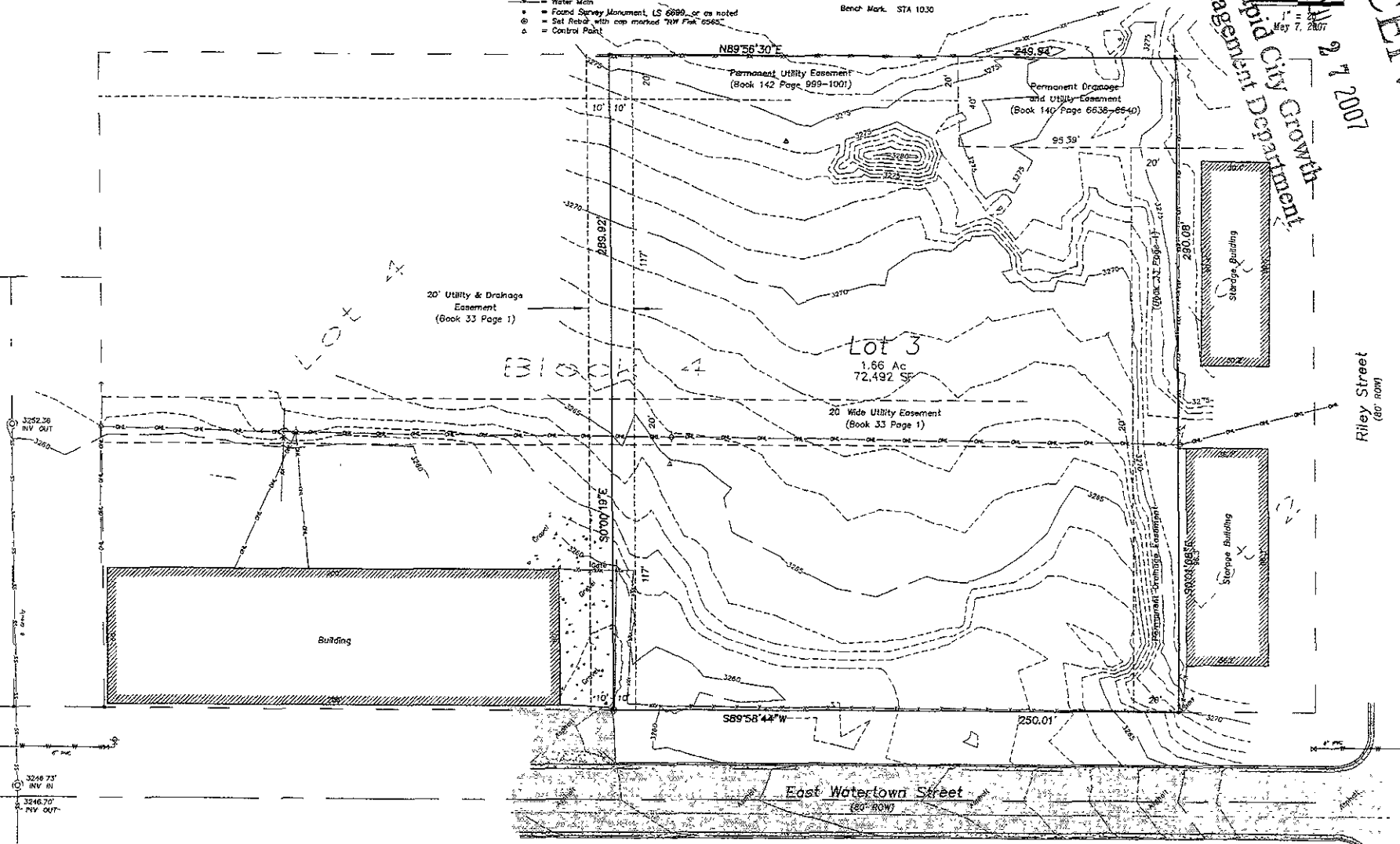
Bench Mark: STA 1030



RECEIVED
MAY 7 2007

Management Department
Rapid City Growth

Topographic Map and Boundary Survey
Lot 3, Block 4, of
Felgel Subdivision
Section 31, T2N, R8E, B.H.M.
Rapid City, Pennington County, South Dakota



1632 Main Street
P.O. Box 911
Rapid City, South Dakota
57702
(605) 345-1233
(605) 341-1112 (fax)

Fisk Land Surveying
& Consulting
Engineers, Inc.



Surveyed by BLM
Date 5/3/07
Drawn by RWF/BL
Date 5/7/07
Checked by RWF
Revisions

Project No
07-05-01

Sheet
2
of
5