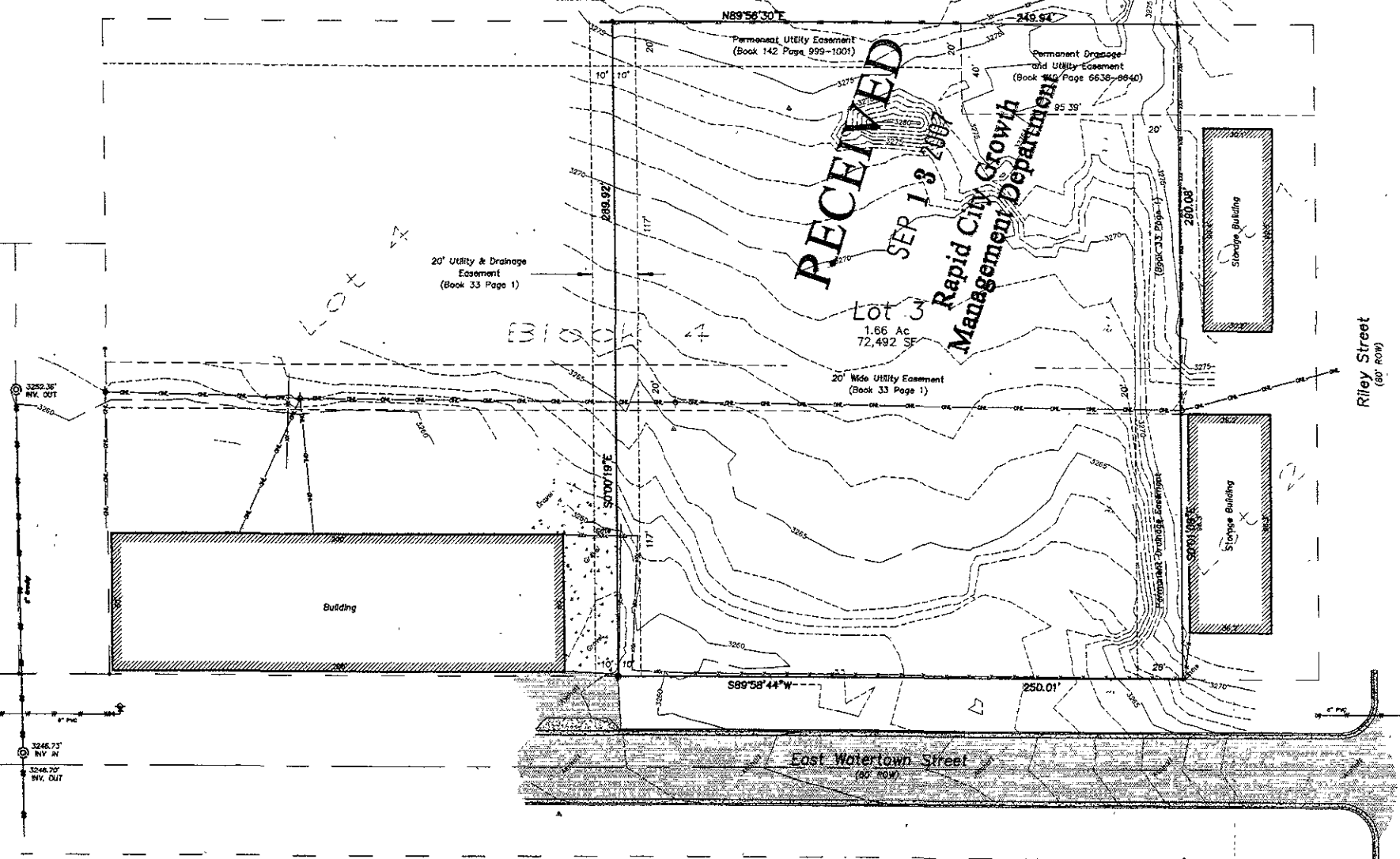
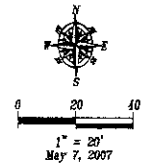


- LEGEND**
- ⊕ Sanitary Sewer Manhole (Unless noted)
 - ⊕ Fire Hydrant
 - ⊕ Water Valve
 - ⊕ Utility Pole
 - ⊕ Guy Wire
 - ⊕ Wood Privacy Fence
 - ⊕ Woven Wire Fence
 - ⊕ Chain Link Fence
 - ⊕ Overhead Utility Line
 - ⊕ Sanitary Sewer Line
 - ⊕ Water Main
 - ⊕ Eased Survey Monument, LS 8955, or as noted
 - ⊕ Set Rebar with cap marked "RW Fisk 8955"
 - ⊕ Control Point

SURVEYOR'S NOTES

Utilities shown are from visual inspection, sketches provided by individual service providers and utility locates performed by South Dakota One Call, Ticket Number 071130253. The actual location of utilities and service lines may vary from this information shown hereon. We assume no liability for utilities and services that are not marked or are incorrectly defined by utility locators.

Bench Mark: STA 1030



Topographic Map and Boundary Survey
 of
 Lot 3, Block 4, of
 Felgel Subdivision
 Section 31, T2N, R8E, B.H.M.
 Rapid City, Pennington County, South Dakota

1022 Sixth Street
 P.O. Box 8154
 Rapid City, South Dakota
 57709
 (605) 248-1826
 (605) 248-1112 (fx)

**Fisk Land Surveying
 & Consulting
 Engineers, Inc.**



Surveyed by: B.L.M.
 Date: 5/3/07
 Drawn by: RWF:BL
 Date: 3/7/07
 Checked by: RWF

Revisions

 Project No.
 07-05-07

 Sheet
 2
 of
 6