

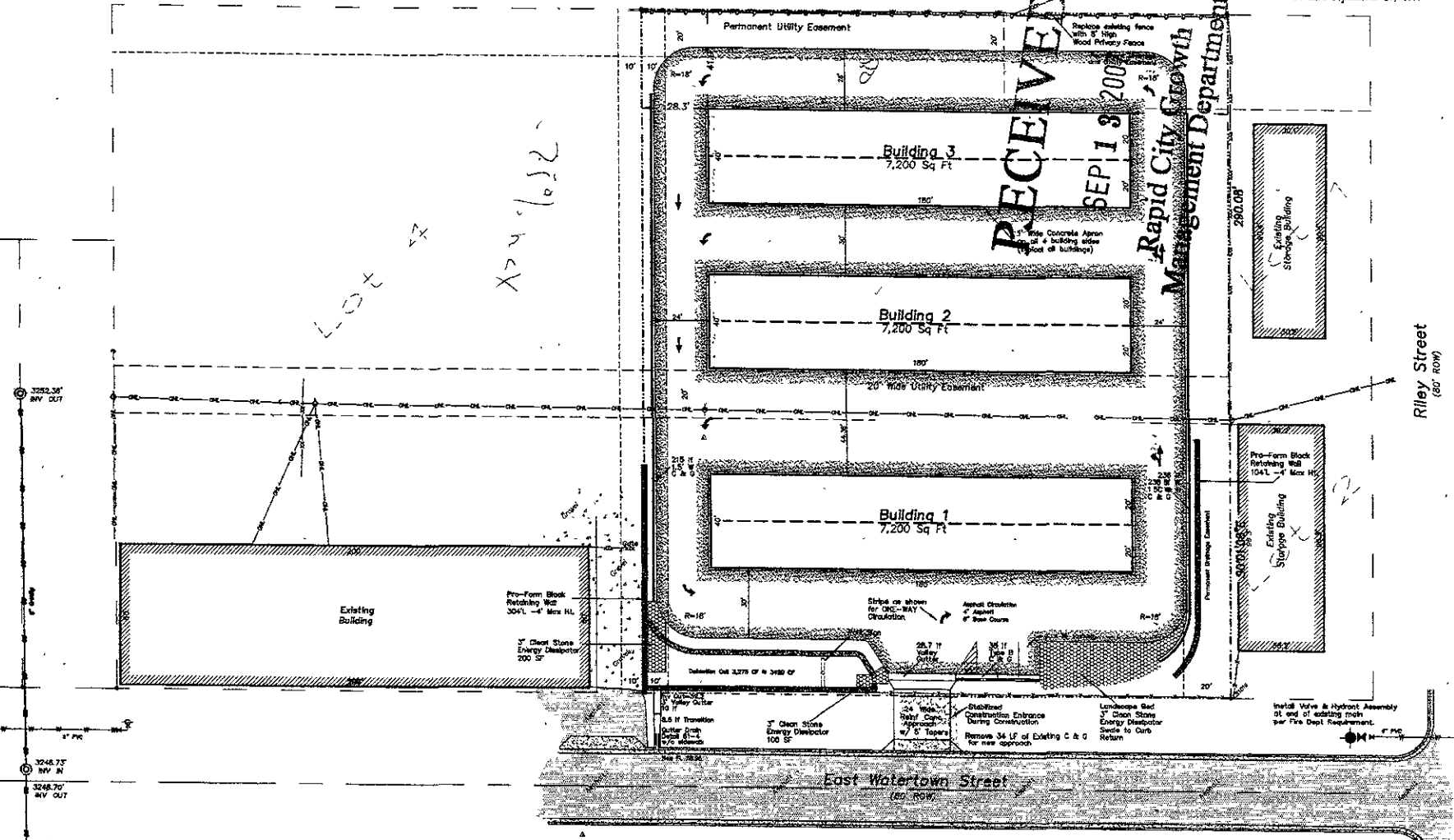
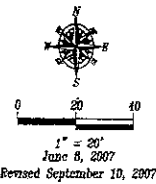
- LEGEND**
- ⊙ - Sanitary Sewer Manhole (unless noted)
 - ⊙ - Fire Hydrant
 - ⊙ - Water Valve
 - ⊙ - Utility Pole
 - ⊙ - City Meter
 - Wood Privacy Fence
 - Iron Wire Fence
 - Chain Link Fence
 - Overhead Utility Line
 - Sanitary Sewer Line
 - Water Main
 - ⊙ - Found Survey Monument, LS 8599, or as noted
 - ⊙ - Set Nail with cap marked "RW Plat 8365"
 - ⊙ - Control Point

SURVEYOR'S NOTES

Utilities shown are from visual inspection, sketches provided by individual service providers and utility locates performed by South Dakota One Call, Ticket Number 07130253. The actual location of utilities and service lines may vary from the information shown hereon. We assume no liability for utilities and services that are not marked or are incorrectly defined by utility locators.

Bench Mark: STA 1030

ONE CALL
BEFORE DIGGING
1-800-781-7474



Fisk Land Surveying
& Consulting
Engineers, Inc.
1000 17th Street, Suite 200
Sioux Falls, SD 57104
(605) 341-1238 (fax) (605) 341-1112 (cell)
http://www.fiskland.com



The information herein is representative material and specific to the data and shall not be used for any other purpose or stated.

No warranty or guarantee is expressed or implied in any part, for any other purpose of any other person or the project as stated.

Site Plan
Lot 3, Block 4, of
Felgel Subdivision
Section 31, T2N, R8E, B.H.M.
Rapid City, Pennington County, South Dakota

Surveyed by: RL/M
Date: 3/3/07
Drawn by: RWF
Date: 5/7/07
Checked by: WF
Revisions
Gen Rev 9/10/07

Project No.
07-05-01

Sheet
3
of
6