

**LEGEND**

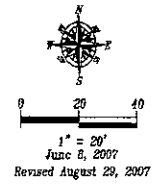
- Sanitary Sewer Manhole (Unless noted)
- Fire Hydrant
- Water Valve
- Utility Pole
- Guy Wire
- Wood Privacy Fence
- Wood Wire Fence
- Chain Link Fence
- Overhead Utility Line
- Sanitary Sewer Line
- Water Main
- Found Survey Monument, LS 8888, or as noted
- Set Rebar with cap marked "The Pak 6562"
- ▲ Control Point

**SURVEYOR'S NOTES**

Utilities shown are from visual inspection, sketches provided by individual service providers and Utility Locates performed by South Dakota One Call, Ticket Number 07130253. The actual location of utilities and service lines may vary from the information shown hereon. We assume no liability for utilities and services that are not marked or are incorrectly defined by utility locators.

Benchmark STA 1030

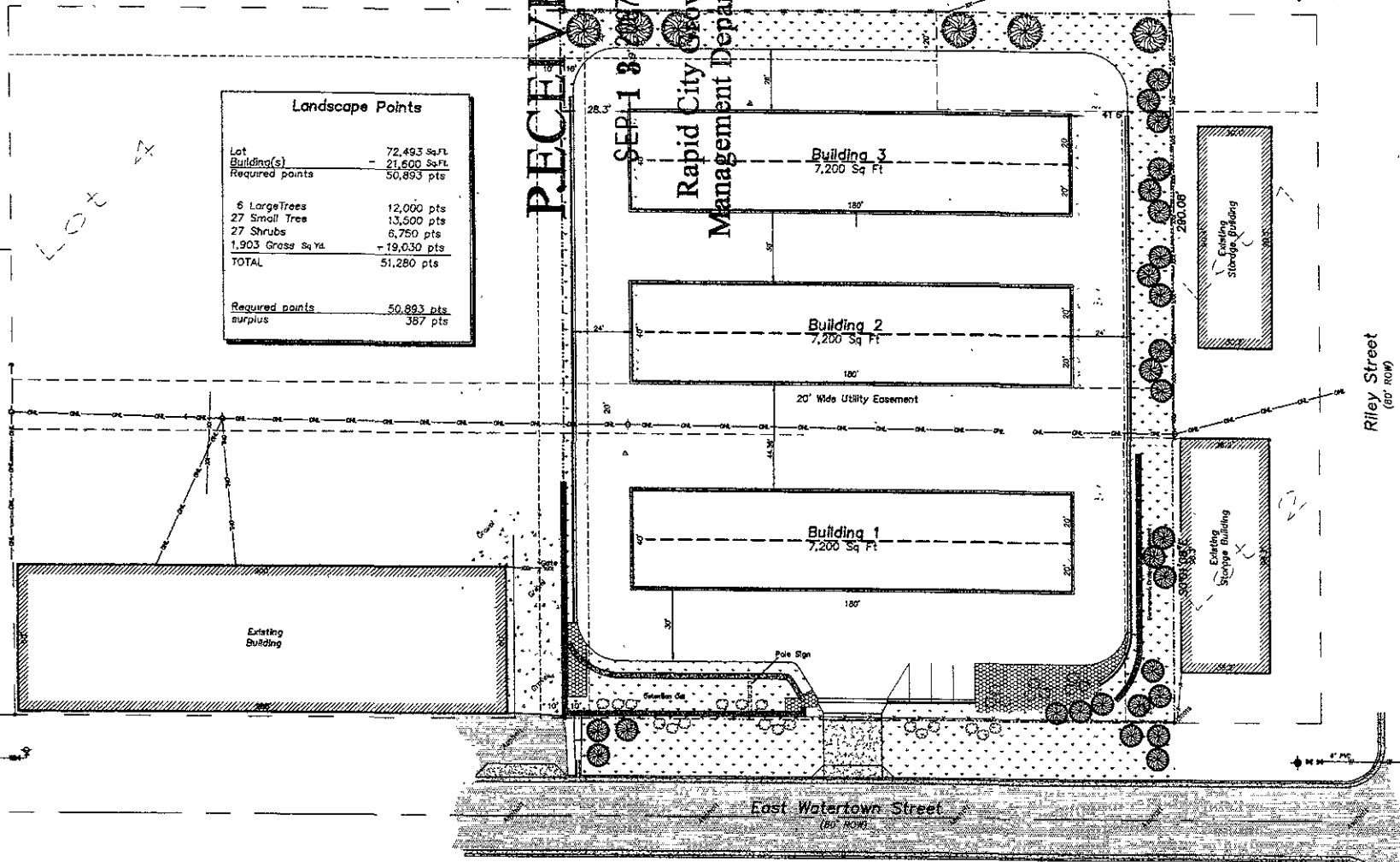
ONE CALL  
BEFORE DIGGING  
1-800-781-7474



Landscape Points	
Lot	72,493 Sq.Ft.
Building(s)	21,600 Sq.Ft.
Required points	50,893 pts
6 Large Trees	12,000 pts
27 Small Trees	13,500 pts
27 Shrubs	6,750 pts
1,903 Gross Sq.Yd.	19,030 pts
<b>TOTAL</b>	<b>51,280 pts</b>
Required points	50,893 pts
surplus	387 pts

RECEIVED

SEP 13 2007  
Rapid City Growth  
Management Department



Fisk Land Surveying  
& Consulting  
& Engineers, Inc.  
1022 Main Street - P.O. Box 6784  
Rapid City, SD 57107  
(605) 342-2330 (605) 341-1172 (F)



This information herein is provided for informational purposes only. It is not intended to be used for any other purpose without the express written consent of the provider.

Landscape Plan  
Lot 3, Block 4, of  
Feigel Subdivision  
Section 31, T2N, R8E, B.H.M.  
Rapid City, Pennington County, South Dakota

Surveyed by B.M.  
Date 5/3/07  
Drawn by RW  
Date 5/7/07  
Checked by W  
Revisions  
Gen. Rev 8/28/07

Project No  
07-05-01  
Sheet  
5  
of  
6