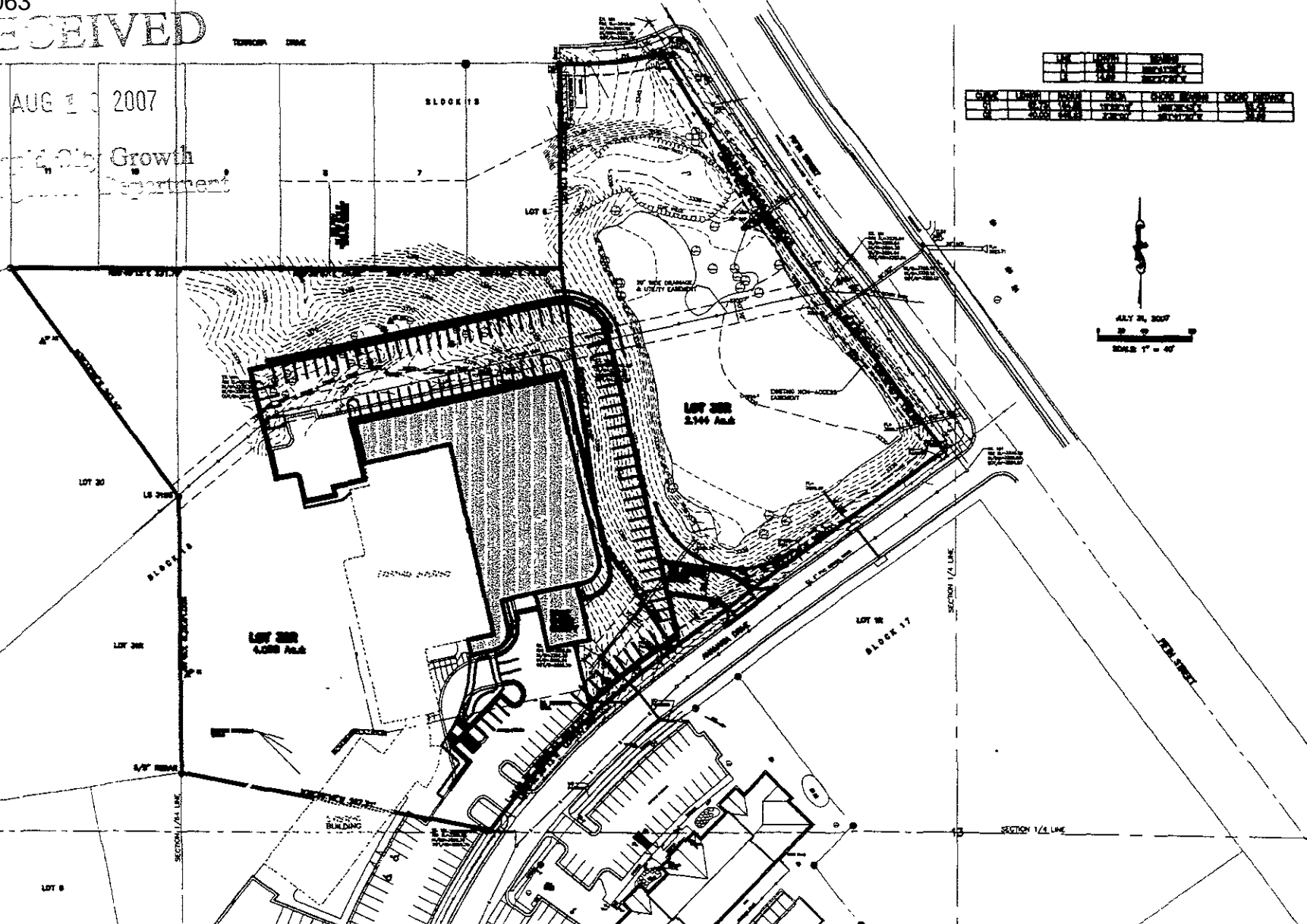


07RZ063

RECEIVED

AUG 1 2007

Portland City Growth Department



CLASS	LENGTH	WIDTH	AREA	PERCENT	PERCENT	PERCENT
1	100	100	10000	100	100	100
2	100	100	10000	100	100	100
3	100	100	10000	100	100	100
4	100	100	10000	100	100	100
5	100	100	10000	100	100	100
6	100	100	10000	100	100	100
7	100	100	10000	100	100	100
8	100	100	10000	100	100	100
9	100	100	10000	100	100	100
10	100	100	10000	100	100	100



NO.	DESCRIPTION	DATE	BY
1	REVISION		
2	REVISION		
3	REVISION		
4	REVISION		
5	REVISION		
6	REVISION		
7	REVISION		
8	REVISION		
9	REVISION		
10	REVISION		

LEGAL DESCRIPTION
 THIS PLAN IS A PART OF THE
 RECORD MAP NO. 12345
 OF THE CITY OF PORTLAND,
 CLATSOP COUNTY, OREGON,
 FILED IN THE OFFICE OF THE
 CLERK OF CLATSOP COUNTY,
 PORTLAND, OREGON,
 ON JULY 24, 2007.
 SHEET 12 OF 12

BLACK HILLS SURVEY COMPANY