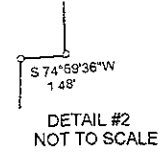
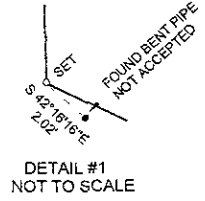
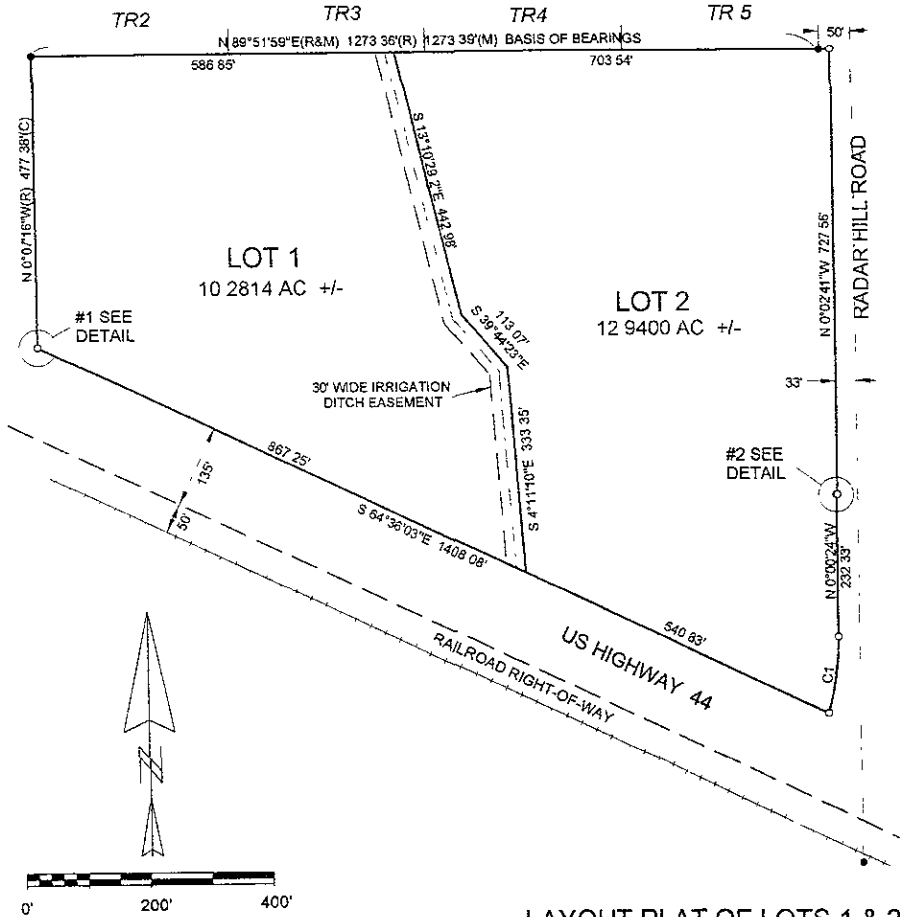


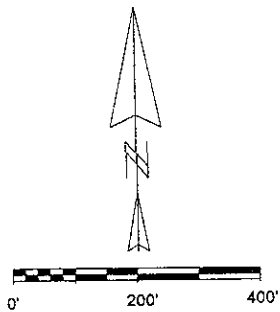
WILEMAN SUBDIVISION



Curve	Delta Angle	Radius	Arc	Chord	Chord Bearing
1	15°07'26.7"	477 00	125 91	125 55	S 7°33'22.7"W

- Found Survey Monument
- Set Rebar with #6251 Cap

Prepared by
Hanson Surveying & Mapping
832 Horace Mann Drive
Rapid City, SD 57701
605-388-9652



LAYOUT PLAT OF LOTS 1 & 2 OF POWDERHORN SUBDIVISION
(FORMERLY UNPLATTED SE1/4NE1/4 NORTH OF HWY 44 AND LESS HIGHWAY LOTS)
LOCATED IN SE1/4NE1/4 OF SECTION 24, T1N, R8E, B H M.
PENNINGTON COUNTY, SOUTH DAKOTA