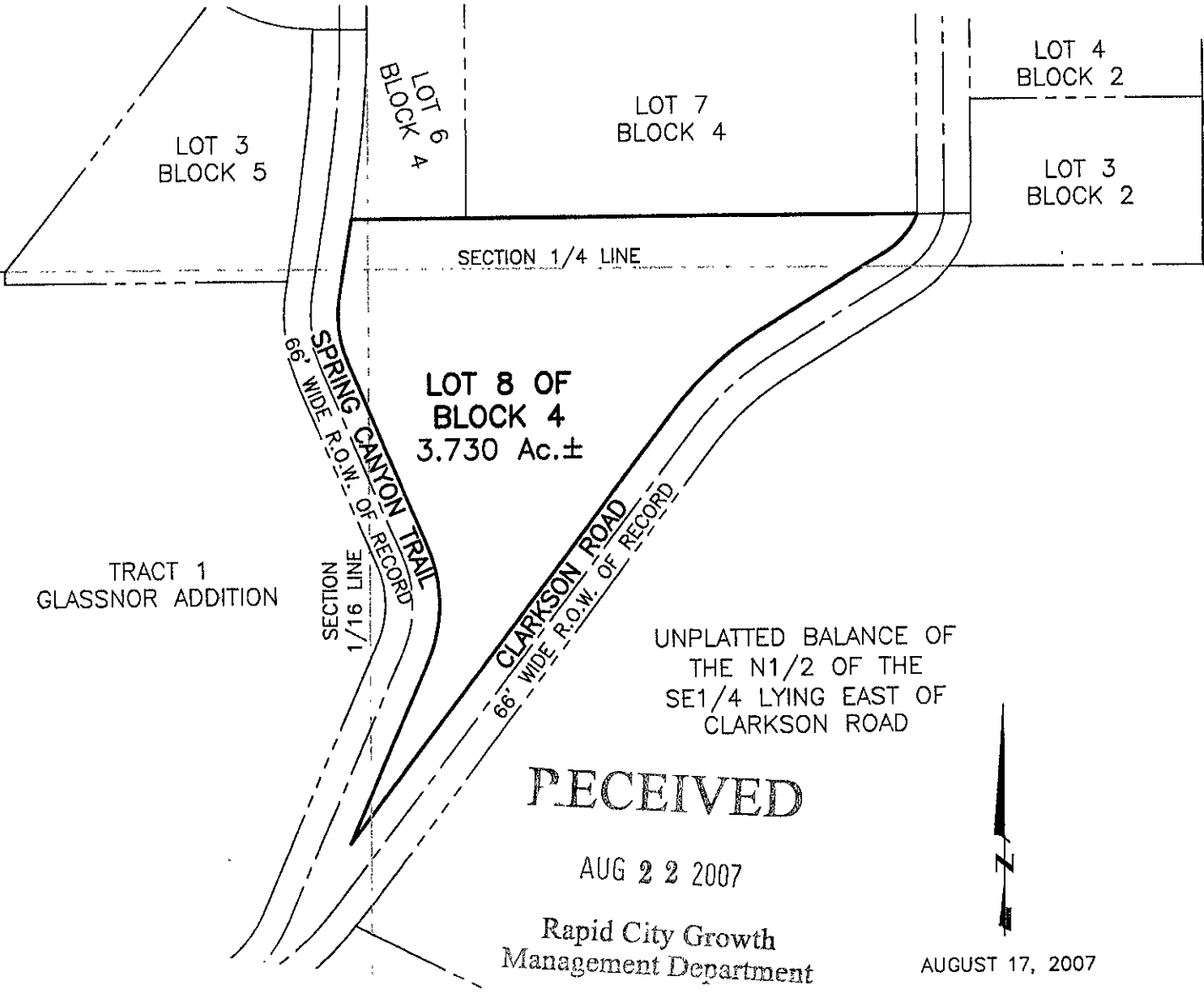


LAYOUT PLAT OF LOT 8 OF BLOCK 4, CLARKSON SUBDIVISION

(formerly the balance of the N1/2 of the SE1/4
lying west of Clarkson Road & portion of the SE1/4 of the NE1/4)
LOCATED IN N1/2 OF THE SE1/4
SECTION 31, T1N, R7E, BHM
PENNINGTON COUNTY, SOUTH DAKOTA



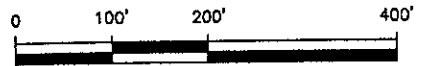
RECEIVED

AUG 22 2007

Rapid City Growth
Management Department



AUGUST 17, 2007



SCALE 1" = 400'



Renner & Associates, LLC.

616 Sixth St. * Rapid City, SD 57701 * 605/721-7310
FAX: 605/721-7313 * E-MAIL: Gary@RennerAssoc.com
* Spearfish 605/717-0016 *