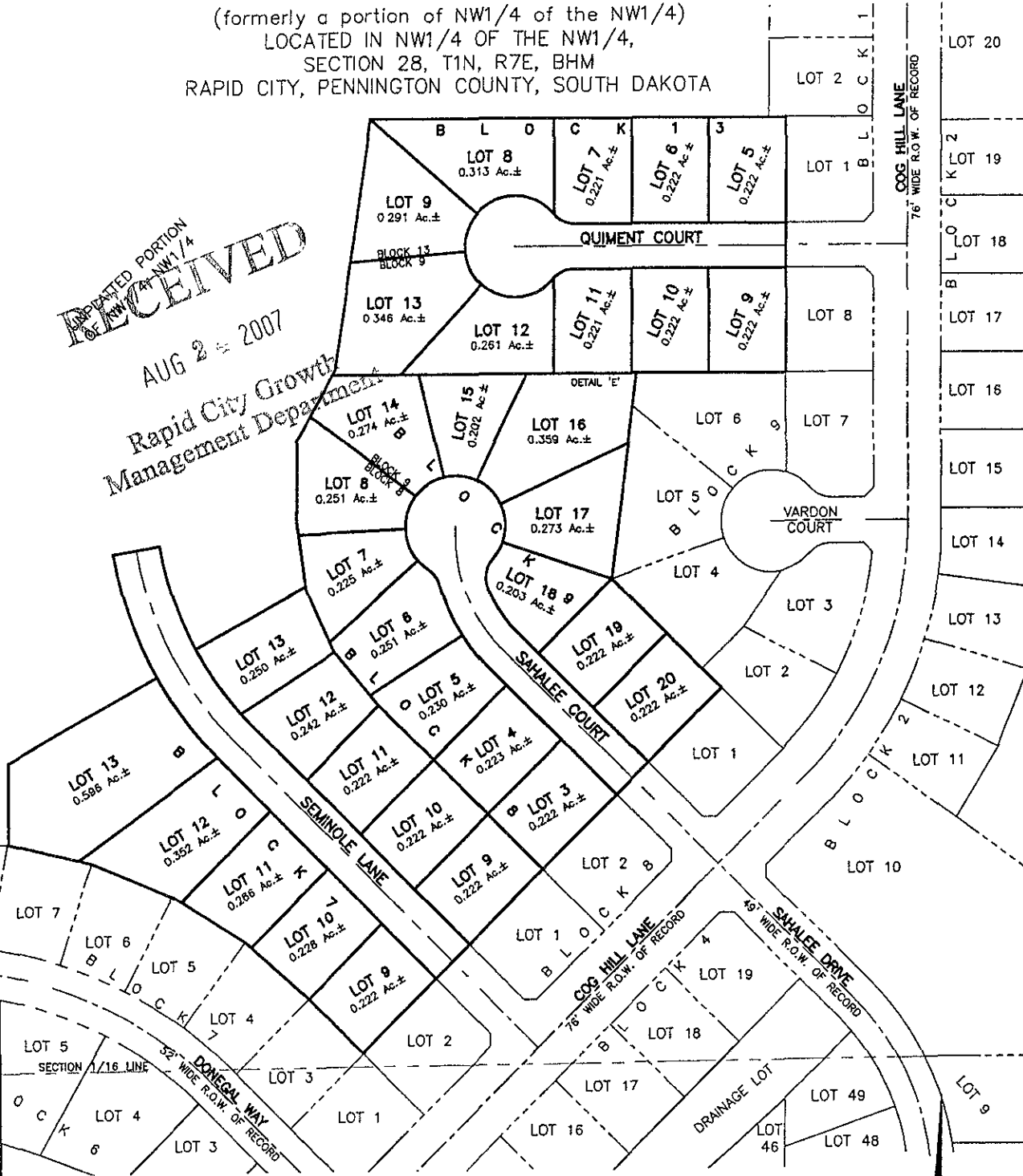


# LOTS 9 THRU 13 OF BLOCK 7, LOTS 3 THRU 13 OF BLOCK 8, LOTS 9 THRU 20 OF BLOCK 9, AND LOTS 5 THRU 9 OF BLOCK 13,

## RED ROCK MEADOWS SUBDIVISION

(formerly a portion of NW1/4 of the NW1/4)  
LOCATED IN NW1/4 OF THE NW1/4,  
SECTION 28, T1N, R7E, BHM  
RAPID CITY, PENNINGTON COUNTY, SOUTH DAKOTA

UNIMPAVED PORTION  
OF NW1/4  
**RECEIVED**  
AUG 2 2007  
Rapid City Growth  
Management Department



SECTION 1/16 LINE

DUNSMORE ROAD  
52' WIDE R.O.W. OF RECORD

### Renner & Associates, LLC.

616 Sixth St. \* Rapid City, SD 57701 \* 605/721-7310  
FAX: 605/721-7313 \* E-MAIL: Gary@RennerAssoc.com  
\* Spearfish 605/717-0016 \*

