

07RZ014

NOTES:

- ESTIMATED BUILDABLE AREA DUE TO PLACEMENT OF FILL MATERIAL TO THE PROPOSED 300-YEAR FLOODPLAIN LINE IS 2.3 AC.

- CWSEL - CALCULATED WATER SURFACE ELEVATION SHOWN ON THIS SHEET IS BASED ON MEC-KAS MODELING USING THE PROPOSED GEOMETRY

- ALL STABILIZED CONSTRUCTION ENTRANCE APPLICATION, MAINTENANCE, AND DESIGN CRITERIA SHALL BE MET PER RAPID CITY STANDARD SPECIFICATIONS 2004. RECLAMATION OF ALL DISTURBED GROUND SHALL BE CONDUCTED UPON PROJECT COMPLETION, INCLUDING RE-SEEDING AS NECESSARY.

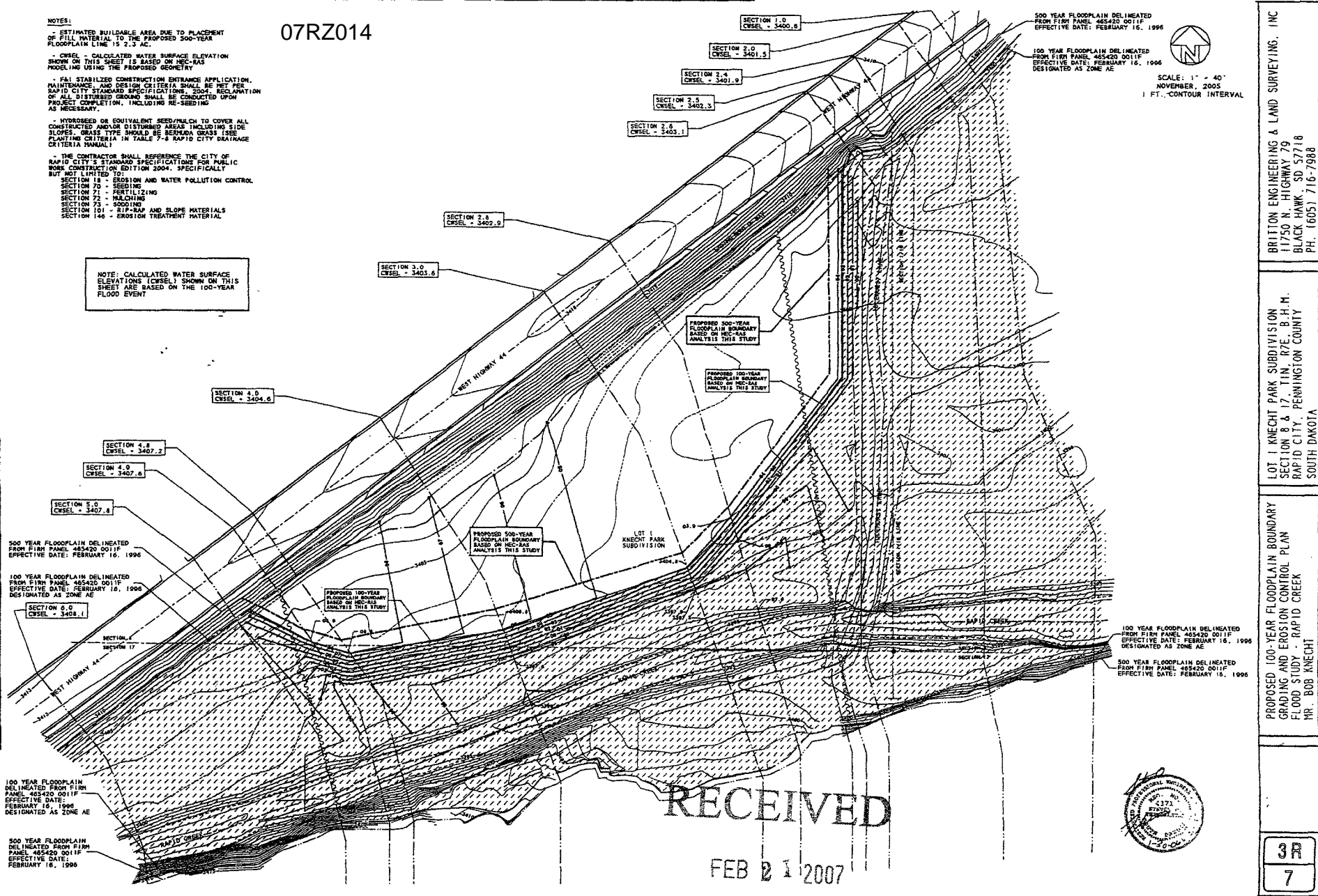
- HYDROSEED OR EQUIVALENT SEED/MULCH TO COVER ALL CONSTRUCTED AND/OR DISTURBED AREAS INCLUDING SIDE SLOPES. GRASS TYPE SHOULD BE BERBERIS GRASS (SEE PLANTING CRITERIA IN TABLE 7-8 RAPID CITY DRAINAGE CRITERIA MANUAL)

- THE CONTRACTOR SHALL REFERENCE THE CITY OF RAPID CITY'S STANDARD SPECIFICATIONS FOR PUBLIC WORK CONSTRUCTION EDITION 2004, SPECIFICALLY BUT NOT LIMITED TO:  
SECTION 11 - EROSION AND WATER POLLUTION CONTROL  
SECTION 70 - SEEDING  
SECTION 71 - FERTILIZING  
SECTION 72 - MULCHING  
SECTION 73 - SOODING  
SECTION 101 - RIP-RAP AND SLOPE MATERIALS  
SECTION 146 - EROSION TREATMENT MATERIAL

NOTE: CALCULATED WATER SURFACE ELEVATIONS (CWSEL) SHOWN ON THIS SHEET ARE BASED ON THE 100-YEAR FLOOD EVENT

300 YEAR FLOODPLAIN DELINEATED FROM FIRM PANEL 45420 001/F EFFECTIVE DATE: FEBRUARY 16, 1996  
100 YEAR FLOODPLAIN DELINEATED FROM FIRM PANEL 45420 001/F EFFECTIVE DATE: FEBRUARY 16, 1996 DESIGNATED AS ZONE AE

SCALE: 1" = 40'  
NOVEMBER, 2005  
1 FT. CONTOUR INTERVAL



BRITTON ENGINEERING & LAND SURVEYING, INC.  
11750 N. HIGHWAY 79  
BLACK HAWK, SD 57718  
PH: 605/716-7988

LOT 1 KNECHT PARK SUBDIVISION  
SECTION 8 & J 17 T.1N, R7E, B.H.M.  
RAPID CITY, PENNINGTON COUNTY  
SOUTH DAKOTA

PROPOSED 100-YEAR FLOODPLAIN BOUNDARY  
GRADING AND EROSION CONTROL PLAN  
FLOOD STUDY - RAPID CREEK  
MR. BOB ANECHI

RECEIVED

FEB 21 2007



3A  
7