

BLACK HILLS SURGERY CENTER - PROPOSED EAST ELEVATION

SCALE 1/16" = 1'-0"

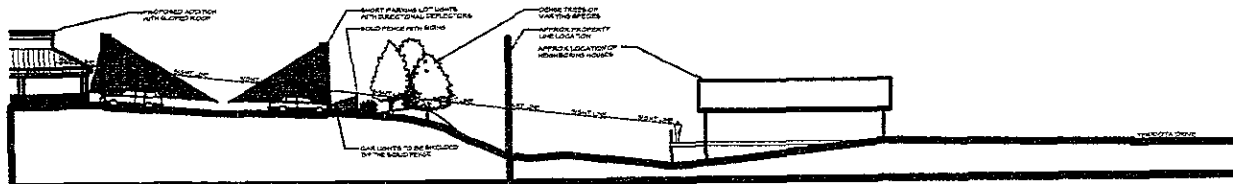
WILLIAMS & ASSOCIATES
ARCHITECTURE, P.C.



BLACK HILLS SURGERY CENTER - EXISTING EAST ELEVATION

SCALE 1/16" = 1'-0"

WILLIAMS & ASSOCIATES
ARCHITECTURE, P.C.



BLACK HILLS SURGERY CENTER - PROFILE VIEW AT NORTH END

SCALE 1/16" = 1'-0"

WILLIAMS & ASSOCIATES
ARCHITECTURE, P.C.