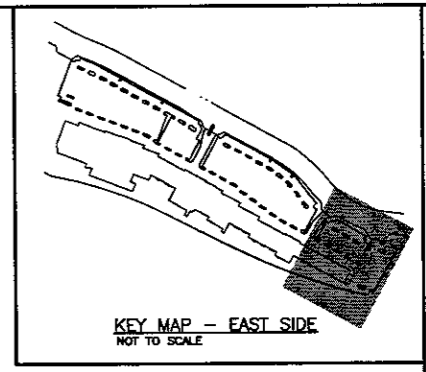
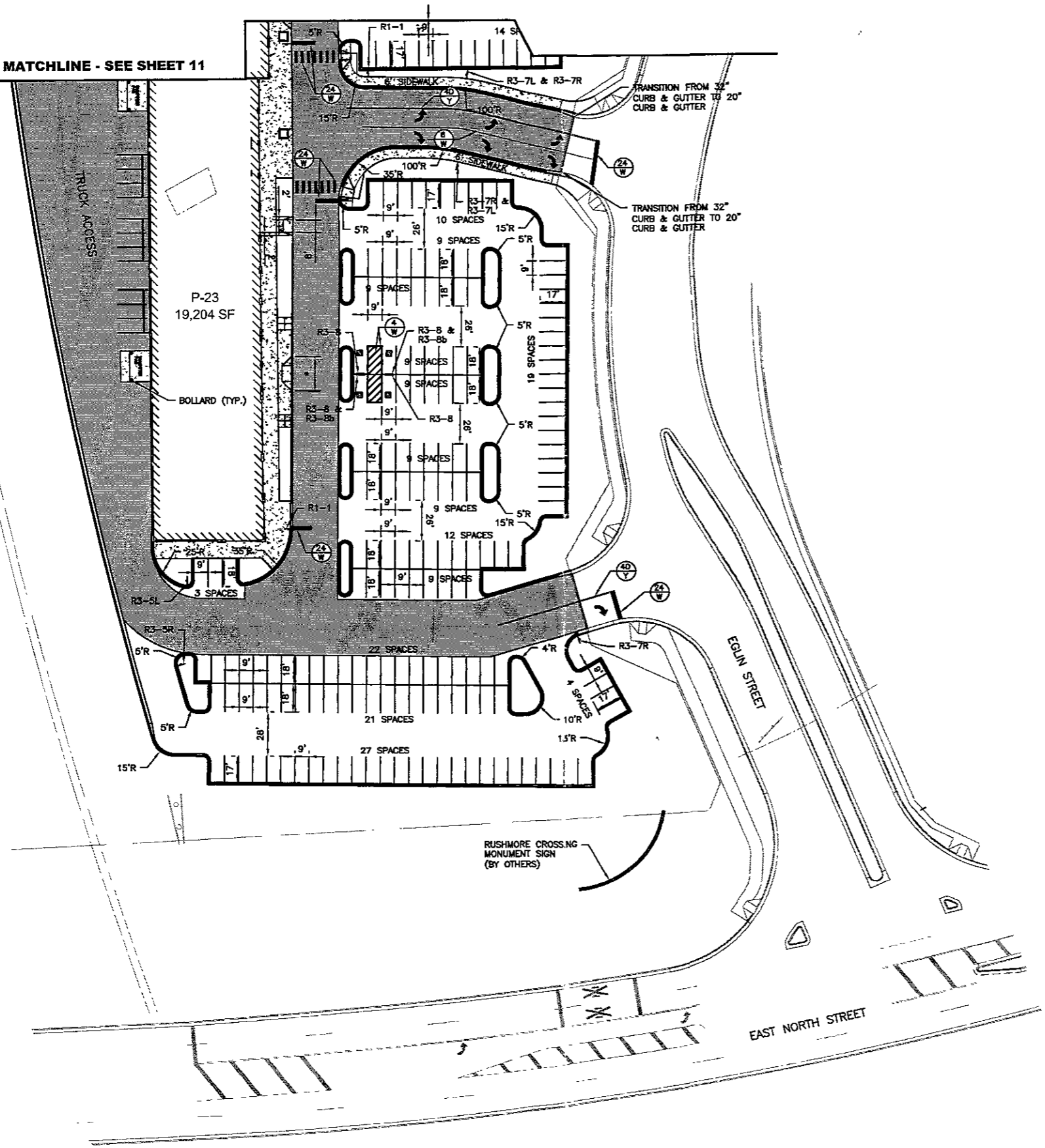


MATCHLINE - SEE SHEET 11



DREAM DESIGN INTERNATIONAL, INC.
CIVIL ENGINEERING · LANDSCAPE ARCHITECTURE
LAND DEVELOPMENT · CONSTRUCTION ADMINISTRATION



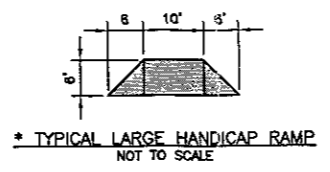
**BID SET
FOR REVIEW ONLY**

Scale:	AS NOTED
Designed By:	STORDC
Drawn By:	JID
Design Date:	
Print Date:	
Internal Job No:	02-0028
Surveyed By:	ARLETH
Survey Date:	
Revisions:	
ISSUED FOR BID -	7-18-07

RECEIVED
AUG 22 2007
Rapid City Growth
Management Department

PRELIMINARY

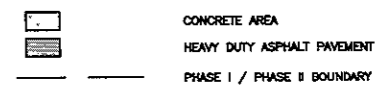
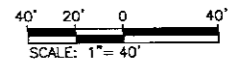
**RUSHMORE CROSSING
SITE PLANS**



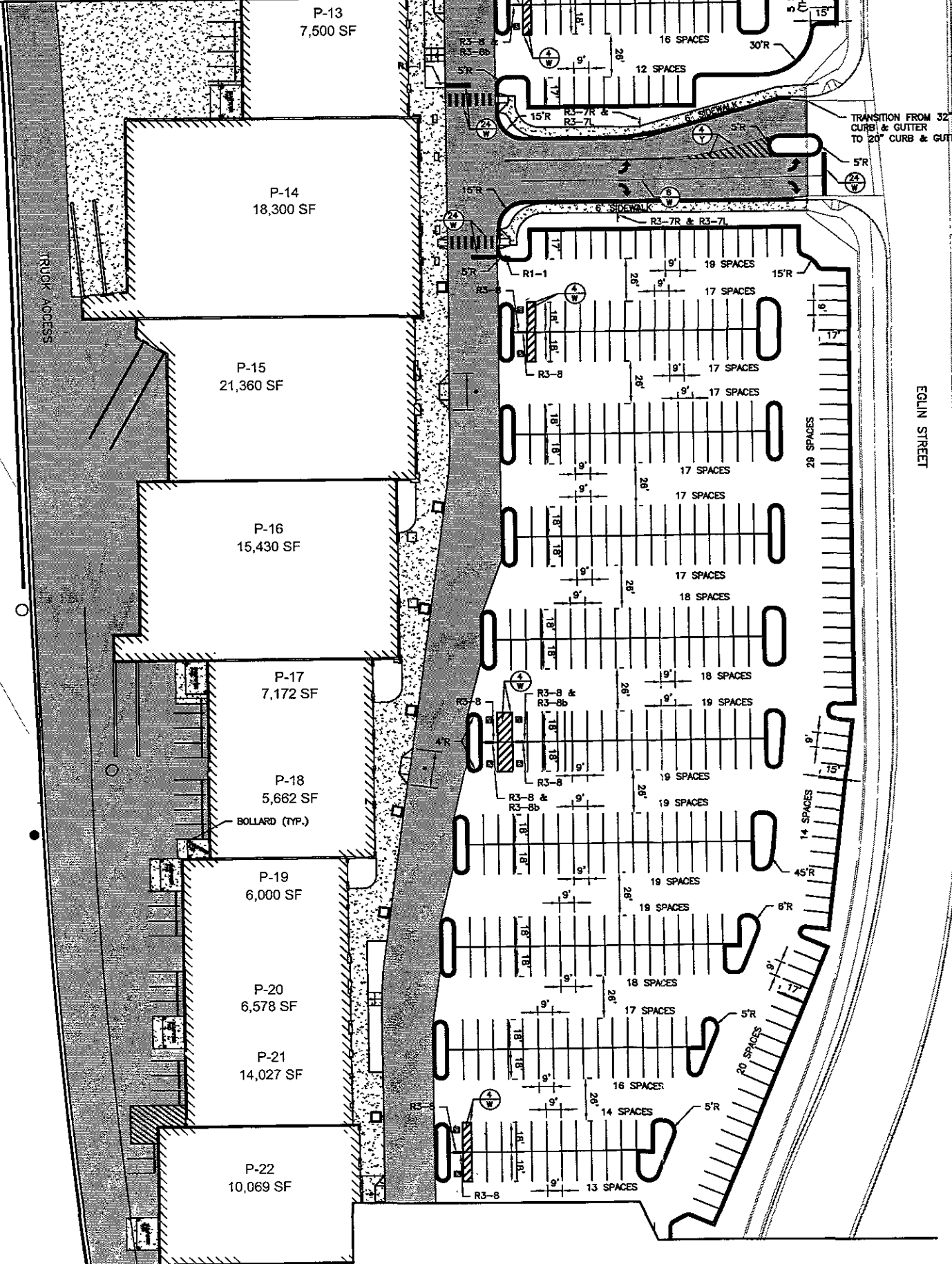
NOTES:
ALL T.B.C. RADII ARE 3.0'
UNLESS OTHERWISE NOTED.
ALL CURB RADII ARE TO T.B.C.
ALL PARKING STALL STRIPING
SHALL BE 4" WHITE UNLESS
OTHERWISE NOTED.
REFER TO EGLIN STREET PLANSET
FOR SIGNAGE WITHIN EGLIN STREET
R.O.W.

ALL SIDEWALK RAMP ARE 4' IN
WIDTH WITH 2" WIDE TAPERS
UNLESS OTHERWISE NOTED.
ALL RAMP CONTAINED IN
CURBSIDE SIDEWALK ARE PER
STANDARD DETAIL 81-5 OF THE
CITY OF RAPID CITY STANDARD
SPECIFICATIONS, 2004 EDITION.
SEE SHEET 85 FOR TRUCK
ACCESS EASEMENT AREA.

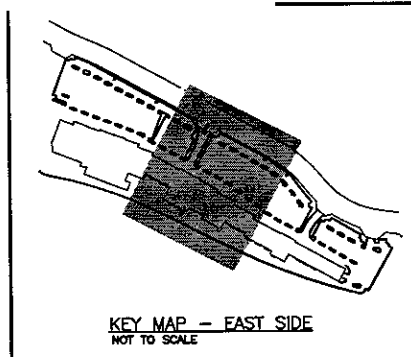
GENERAL CONTRACTOR TO PROVIDE
TEMPORARY 8' CHAINLINK FENCING
AROUND PERIMETER OF PHASE II
(LIFESTYLE DISTRICT).
SEE SHEETS 79 & 80 FOR SIGN
DETAILS.



MATCHLINE - SEE SHEET 10



MATCHLINE - SHEET 12



DREAM DESIGN INTERNATIONAL, INC.
CIVIL ENGINEERING • LANDSCAPE ARCHITECTURE
LAND DEVELOPMENT • CONSTRUCTION ADMINISTRATION

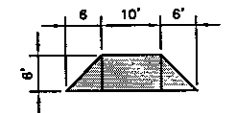


RECEIVED
AUG 22 2007
Rapid City Growth
Management Department

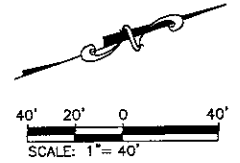
**BID SET
FOR REVIEW ONLY**

Scale	AS NOTED
Designed By	STO/RDC
Drawn By	JID
Design Date	Print Date
Internal Job No	02-0028
Surveyed By	ARLETH
Survey Date	
Revisions	ISSUED FOR BID - 7-18-07

PRELIMINARY



NOTES:
ALL T.B.C. RADII ARE 3.0'
UNLESS OTHERWISE NOTED.
ALL CURB RADII ARE TO T.B.C.
ALL PARKING STALL STRIPING
SHALL BE 4" WHITE UNLESS
OTHERWISE NOTED.
REFER TO EGLIN STREET PLANSET
FOR SIGNAGE WITHIN EGLIN STREET
R.O.W.
ALL SIDEWALK RAMPS ARE 4' IN
WIDTH WITH 2" WIDE TAPERS
UNLESS OTHERWISE NOTED.
ALL RAMPS CONTAINED IN
CURBSIDE SIDEWALK ARE PER
STANDARD DETAIL 61-5 OF THE
CITY OF RAPID CITY STANDARD
SPECIFICATIONS, 2004 EDITION.
SEE SHEET 64 FOR TRUCK
ACCESS BASEMENT AREA.
GENERAL CONTRACTOR TO PROVIDE
TEMPORARY 6" CHAINLINK FENCING
AROUND PERIMETER OF PHASE II
(LIFESTYLE DISTRICT).
SEE SHEETS 79 & 80 FOR SIGN
DETAILS.



CONCRETE AREA
HEAVY DUTY ASPHALT PAVEMENT
PHASE I / PHASE II BOUNDARY

RUSHMORE CROSSING
SITE PLANS