

EXHIBIT "A"

AREA TO BE ANNEXED:

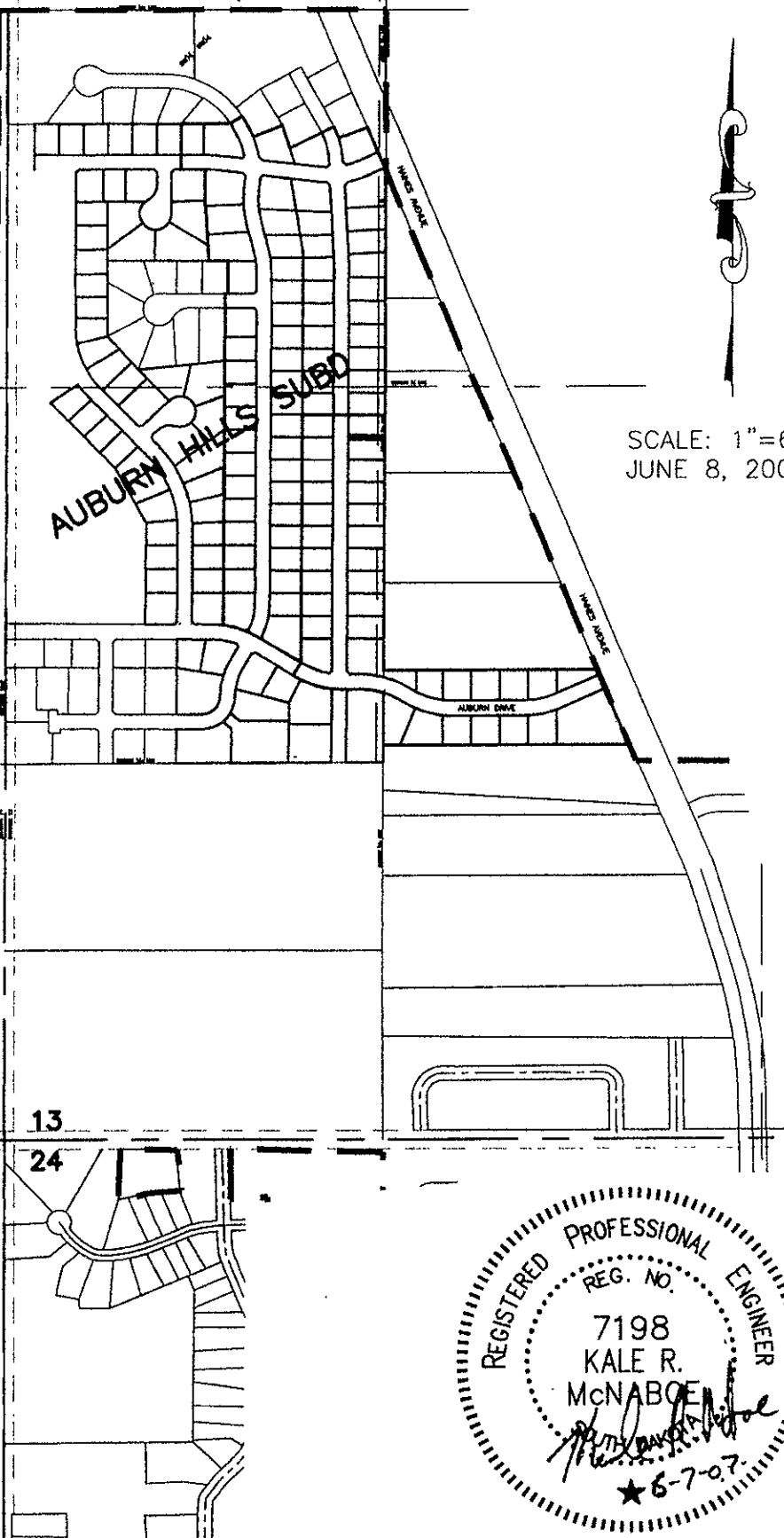
THE SE<sup>1</sup>/<sub>4</sub> OF THE NE<sup>1</sup>/<sub>4</sub> OF SECTION 14, AND THE NE<sup>1</sup>/<sub>4</sub> OF THE SE<sup>1</sup>/<sub>4</sub> OF SECTION 14,  
THE SE<sup>1</sup>/<sub>4</sub> OF THE SE<sup>1</sup>/<sub>4</sub> OF SECTION 14, AND THE NE<sup>1</sup>/<sub>4</sub> OF THE NE<sup>1</sup>/<sub>4</sub> OF SECTION 23,  
ALL LESS THE EAST 33' PREVIOUSLY ANNEXED; LOCATED IN T2N, R7E, B.H.M.,  
PENNINGTON COUNTY, SOUTH DAKOTA

SE<sup>1</sup>/<sub>4</sub> NE<sup>1</sup>/<sub>4</sub>  
SECTION 14

NE<sup>1</sup>/<sub>4</sub> SE<sup>1</sup>/<sub>4</sub>  
SECTION 14

SE<sup>1</sup>/<sub>4</sub> SE<sup>1</sup>/<sub>4</sub>  
SECTION 14

NE<sup>1</sup>/<sub>4</sub> NE<sup>1</sup>/<sub>4</sub>  
SECTION 23



SCALE: 1"=600'  
JUNE 8, 2007

