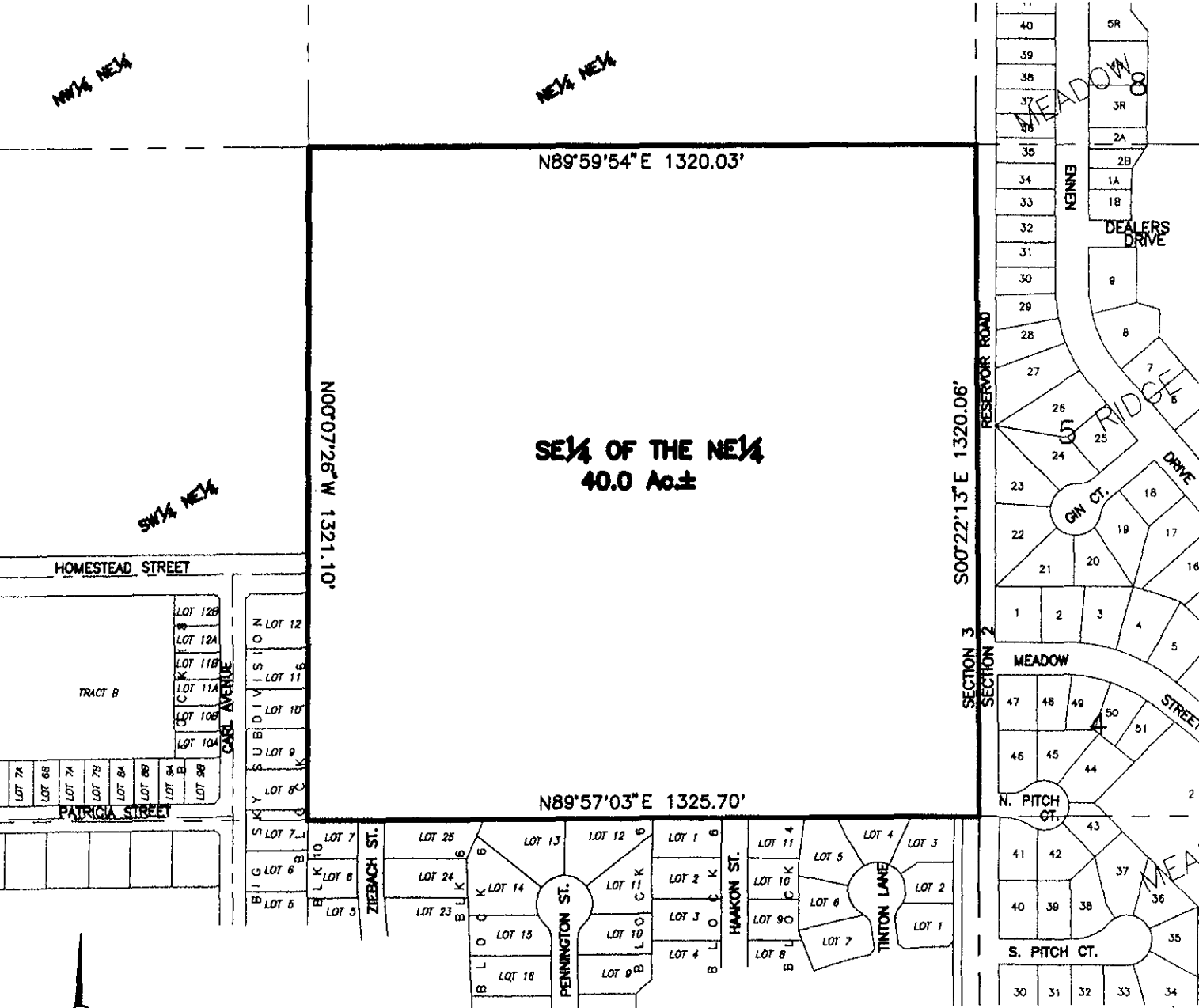


AREA TO BE ANNEXED
SE¹/₄ OF THE NE¹/₄ OF SECTION 3
 LOCATED IN THE SE¹/₄ OF THE NE¹/₄,
 SECTION 3, T1N, R8E, B.H.M.,
 PENNINGTON COUNTY, SOUTH DAKOTA



JULY 12, 2007



SCALE: 1" = 300'

RECEIVED

JUL 13 2007

Rapid City Growth
Management Department