

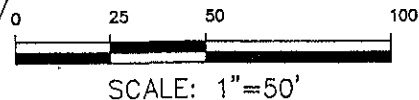
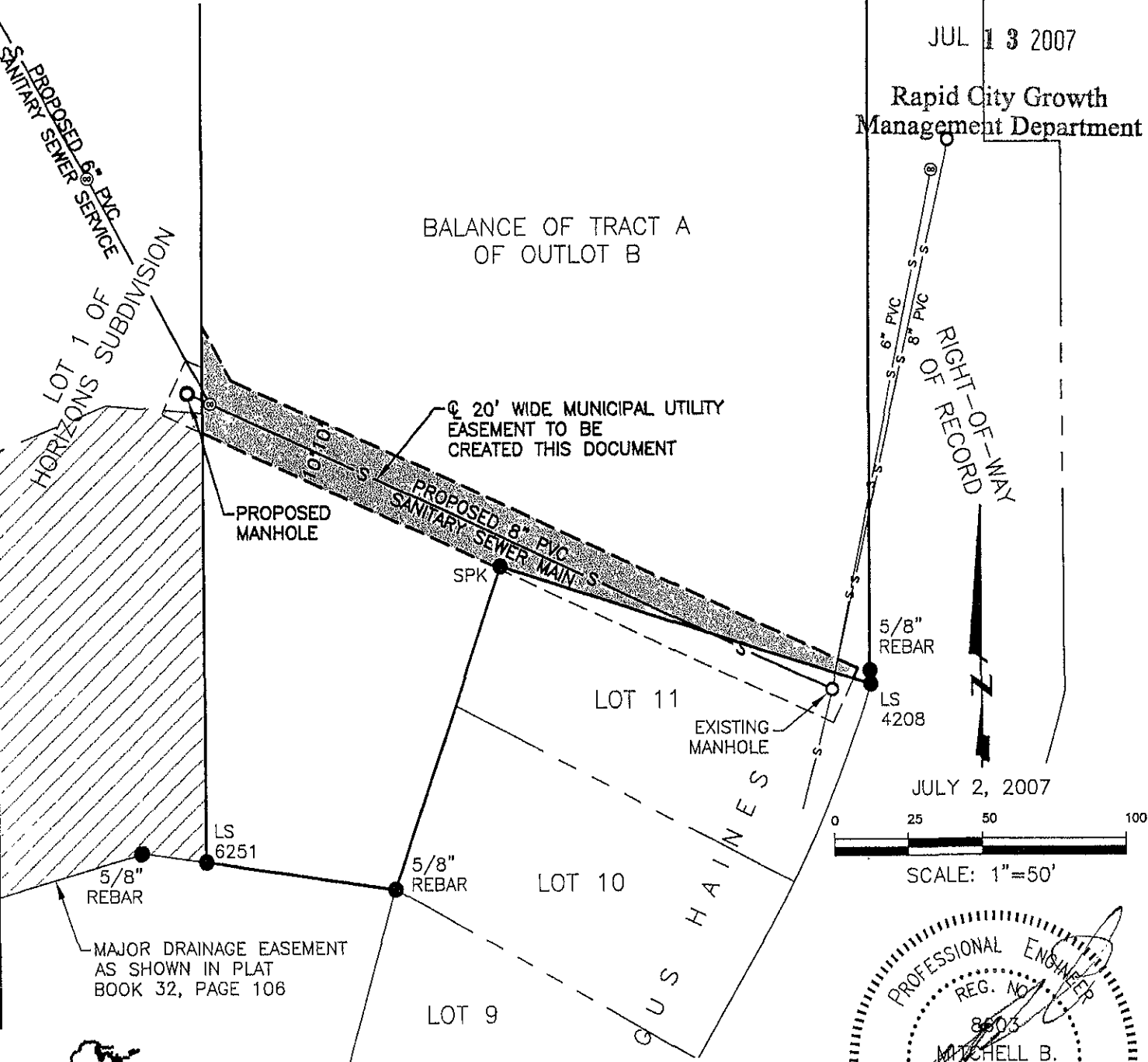
20' WIDE MUNICIPAL UTILITY EASEMENT BALANCE OF TRACT A OF OUTLOT B

LOCATED IN THE NE1/4 OF THE NW1/4,
SECTION 7, T1N, R8E, BHM
RAPID CITY, PENNINGTON COUNTY, SOUTH DAKOTA

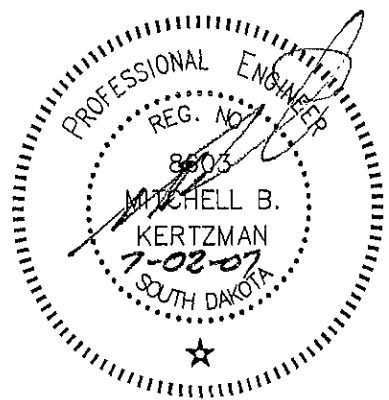
RECEIVED

JUL 13 2007

Rapid City Growth
Management Department



JULY 2, 2007



Renner & Associates, LLC.

616 Sixth St. * Rapid City, SD 57701 * 605/721-7310
FAX: 605/721-7313 * E-MAIL: Gary@RennerAssoc.com
* Spearfish 605/717-0016 *



CITY HALL 1903

EXHIBIT 'A'

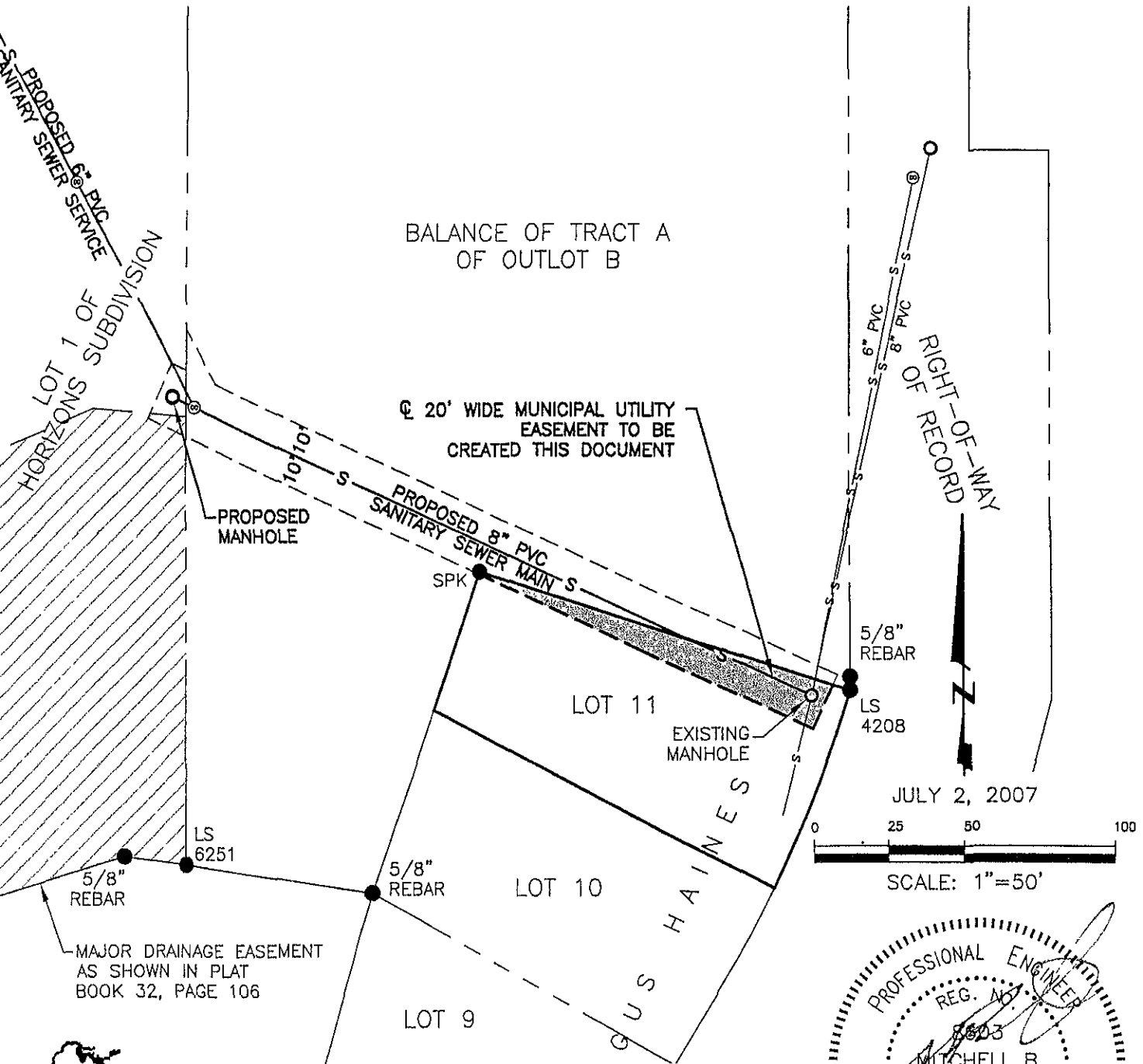
20' WIDE MUNICIPAL UTILITY EASEMENT LOT 11 OF GUS HAINES

RECEIVED

LOCATED IN THE NE1/4 OF THE NW1/4,
SECTION 7, T1N, R8E, BHM

JUL 13 2007

RAPID CITY, PENNINGTON COUNTY, SOUTH DAKOTA
Rapid City Growth Management Department



MAJOR DRAINAGE EASEMENT AS SHOWN IN PLAT BOOK 32, PAGE 106



CITY HALL 1903

Renner & Associates, LLC.

616 Sixth St. * Rapid City, SD 57701 * 605/721-7310
FAX: 605/721-7313 * E-MAIL: Gary@RennerAssoc.com
* Spearfish 605/717-0016 *

