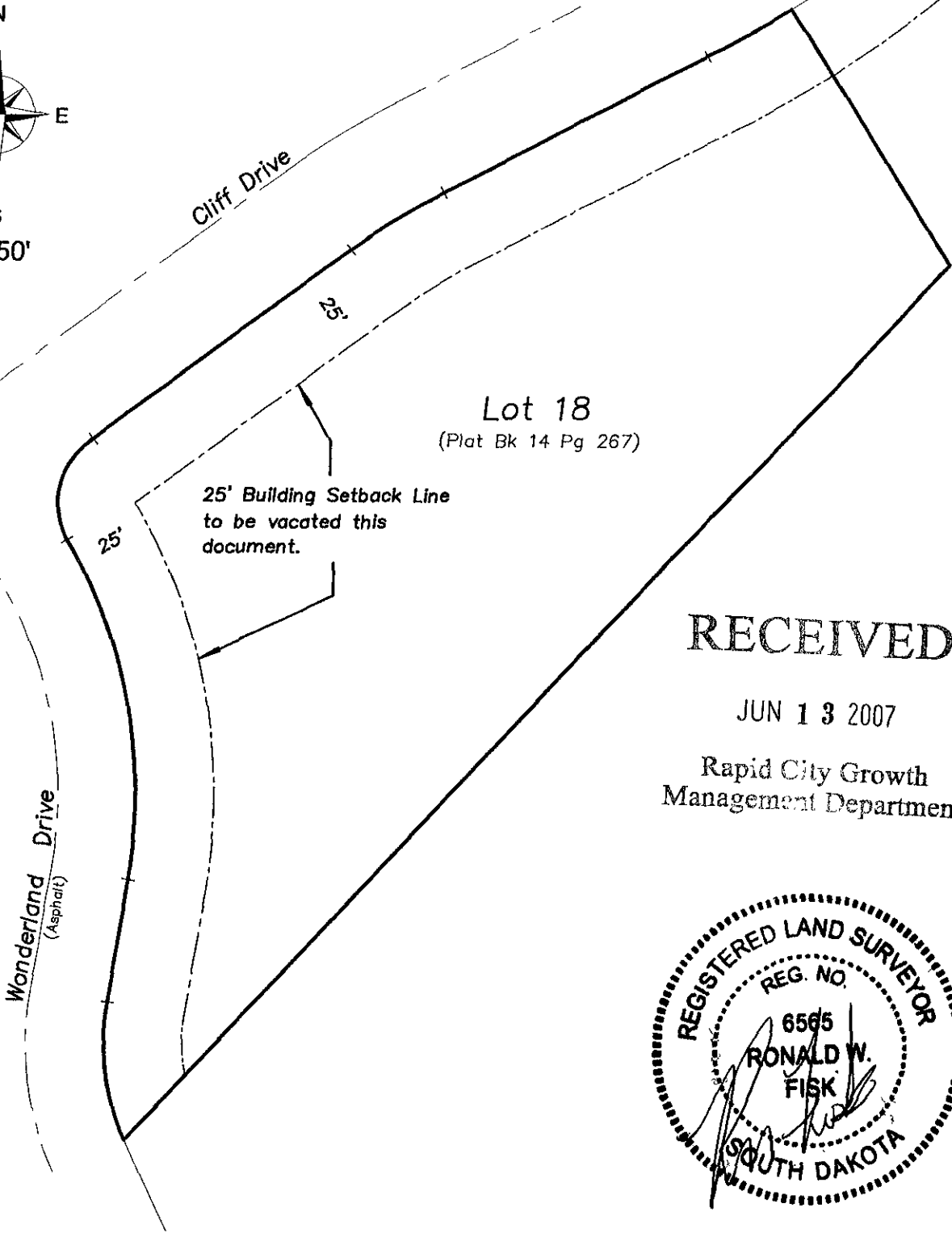
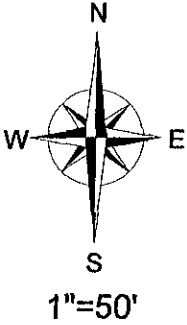


EXHIBIT A

VACATION OF 25' BUILDING SETBACK LINE
LOT 18 OF TRACT 2, CANYON LAKE HEIGHTS SUBDIVISION
LOCATED IN THE NE1/4 OF SECTION 16, T1N, R7E, BHM
RAPID CITY, PENNINGTON COUNTY, SOUTH DAKOTA



RECEIVED

JUN 13 2007

Rapid City Growth
Management Department

