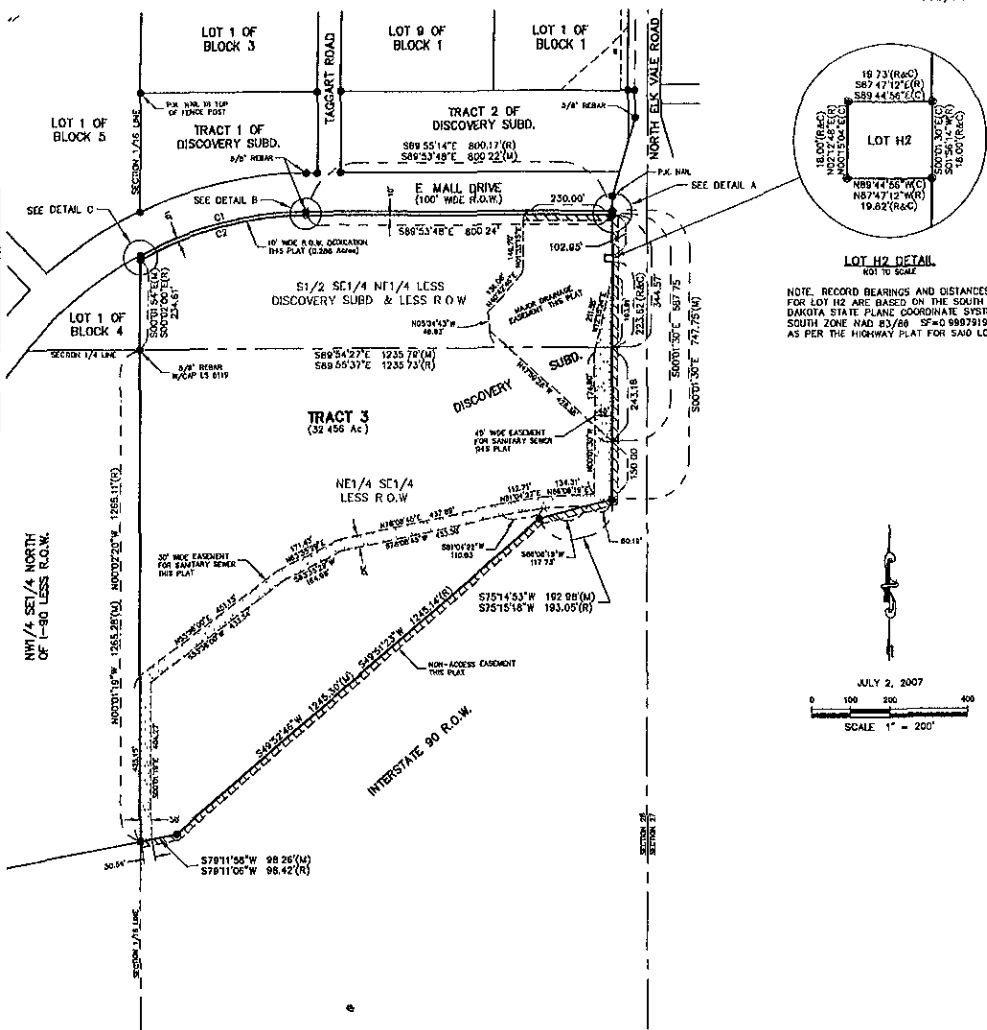
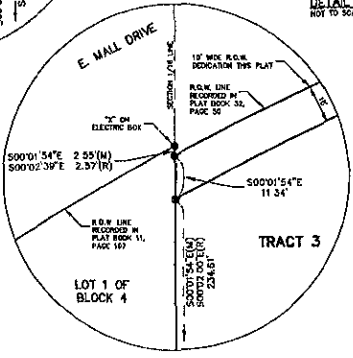
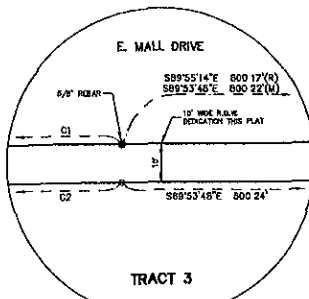
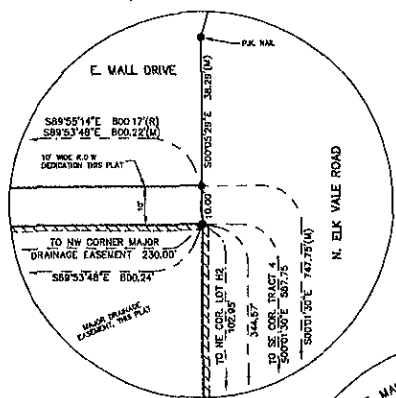
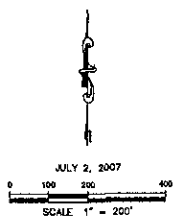


Plat of Tract 3 of Discovery Subdivision and dedicated public right of way
 (formerly NE1/4 SE1/4 LESS R.O.W. and S1/2 SE1/4 NE1/4 Less Discovery Subdivision Less Lot H2 & Less R.O.W.
 located in NE1/4 SE1/4 and in SE1/4 NE1/4 of Section 28, T2N, R8E, BHM,
 Rapid City, Pennington County, South Dakota

Prepared by
 FMG Engineering
 3700 Sturgis Road
 Rapid City, SD 57702
 605/342-4105



LOT H2 DETAIL
 NOTE: RECORD BEARINGS AND DISTANCES FOR LOT H2 ARE BASED ON THE SOUTH DAKOTA STATE PLANE COORDINATE SYSTEM - SOUTH ZONE NAD 83/88 SF=0 998791902 AS PER THE HIGHWAY PLAT FOR SAID LOT



- NOTES**
- Denotes sat 5/8" rebar with survey cap marked "FMG Inc LS 5D 619"
 - Denotes Found Survey Monument (5/8" rebar with survey cap LS 2652 unless otherwise noted)
 - Denotes Sat 3/8" rebar (no cap) at right-of-way line PC's and PT's
 - (R) Denotes Recorded previous plat or description
 - (M) Denotes Measured in the survey
 - (C) Denotes Calculated
- Beats of Bookings:** Per previously recorded plat of I-90 Intersected Business Park.
- Building setback requirements** are as stated in the zoning and/or platting regulations.
- Tract 4 in H's entirety is a major drainage easement and a utility easement.
- Any major drainage assessment shown hereon shall be kept free of all obstructions including but not limited to buildings, walls, fences, hedges, trees and shrubs. These assessments grant to all public subdivisions the right to construct, operate, maintain, inspect, and repair such improvements on structures as it deems expedient to facilitate drainage from any source.
- Utility and Minor Easement: 8' on the interior sides of all lot lines.
- Total area to be dedicated as Public Right of Way with this plat: 0.288 Acres

CURVE TABLE				
CURVE NO.	CHORD BEARING	CHORD DISTANCE	DELTA	LENGTH
C1(a)	N75°02'22"E	448.57'	28°34'17"	525.00'
C1(b)	N78°02'54"E	448.70'	28°04'23"	525.00'
C2	N75°54'24"E	448.97'	28°24'14"	525.00'

- Denotes Major Drainage Easement this plat
- Denotes Sanitary Sewer Easement this plat
- Denotes Non-Access Easement this plat