

**Plat of Copperfield Vista Subdivision**  
 including Lots 1 through 21 of Block 1,  
 Lots 1 through 4 of Block 2,  
 Lots 1 through 5 of Block 3,  
 Lots 1 through 3 of Block 4,  
 Lots 1 & 2 of Block 5,  
 Lots 1 through 6 of Block 6.  
 and Utility Lot 1

07SV005



0 80 160

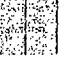
1" = 80'  
 January 26, 2007  
 Basis of Bearings  
 GPS Observation

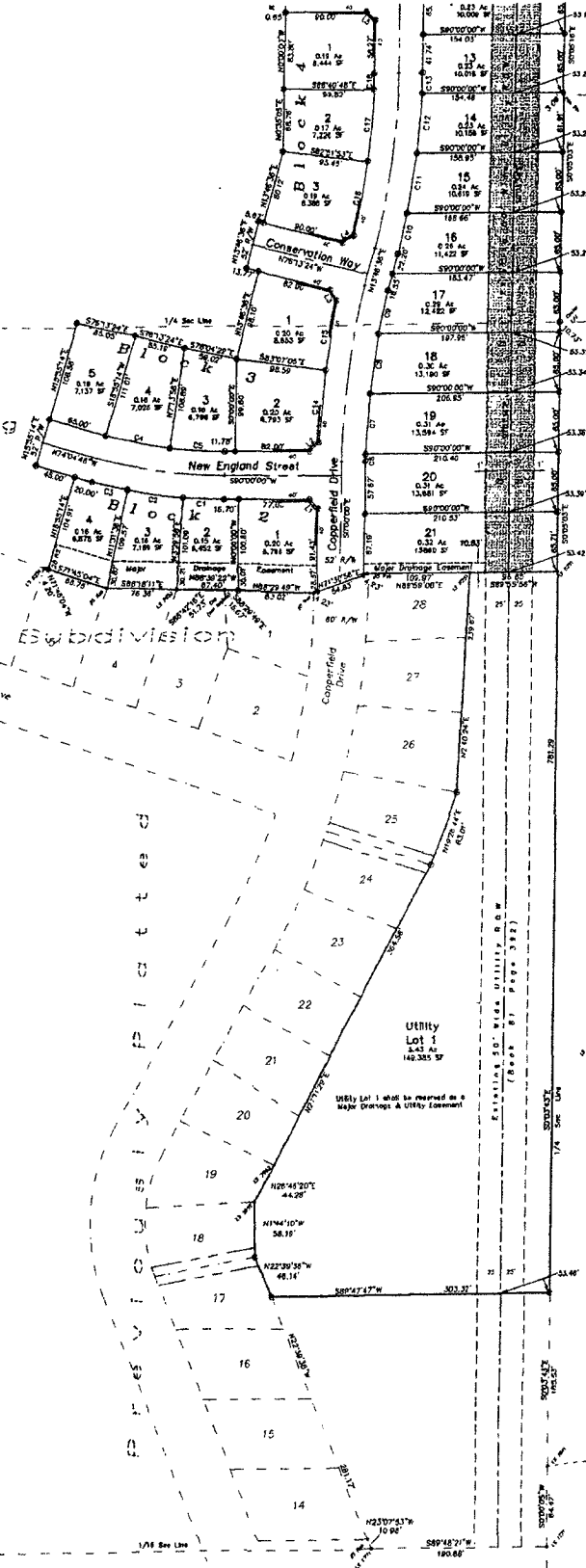
located in the SE 1/4 NW 1/4, and the  
 NE 1/4 SW 1/4, Section 4, T1N, R8E, B.H.M.  
 Rapid City, Pennington County, South Dakota

Prepared by:  
 Risk Land Surveying &  
 Consulting Engineers, Inc.  
 P.O. Box 0154  
 Rapid City, South Dakota 57705  
 605-349-1536  
 Project # 04-09-03

Utility and Minor Drainage Easements 8  
 on the interior side of all lot lines, with  
 the exception of Block 1 which shall have  
 6" Utility and Minor Drainage Easements  
 along front lot lines only on Copperfield Drive

All Major Drainage Easements shown hereon shall be kept  
 free of all obstructions including but not limited to buildings,  
 walls, fences, hedges, trees & shrubs. These easements grant  
 to all public authorities the right to construct, operate, maintain,  
 inspect, and repair such improvements and structures as it deems  
 expedient to facilitate drainage from any source

-  = 5' Wide No-Build Easement to be kept free of all structures, buildings, fencing, pavement, decks, trees and shrubs
- = Found Survey Monument as noted
- ⊙ = Set Rebar with cap marked "RW Frsk 6565"



9:30 A.M.

**RECEIVED**

29  
 JAN 26 2007

**Rapid City Growth  
 Management Department**