

- 1 BEGIN TYPE B CURB AND GUTTER
N 853443.00 E 1214363.82
TBC ELEV = MATCH EXISTING TYPE B CURB
- 2 END TYPE B CURB AND GUTTER
BEGIN 7' R CURB AND FILLET
N 853453.00 E 1214363.22
TBC ELEV = 3252.73
- 3 END 7' R CURB FILLET
BEGIN TYPE B CURB AND GUTTER
N 853452.40 E 1214351.10
TBC ELEV = 3252.77
- 4 END TYPE B CURB AND GUTTER
BEGIN TYPE BL CURB AND GUTTER
N 853444.27 E 1214336.35
TBC ELEV = 3253.06
- 5 TYPE BL CURB AND GUTTER
N 853446.15 E 1214285.27
TBC ELEV = 3253.31
- 6 TYPE BL CURB AND GUTTER
N 853447.88 E 1214258.33
TBC ELEV = 3253.51
- 7 TYPE BL CURB AND GUTTER
N 853451.33 E 1214144.52
TBC ELEV = 3253.65
- 8 TYPE BL CURB AND GUTTER
N 853453.10 E 1214098.39
TBC ELEV = 3254.22

- 9 END STANDARD TYPE BL CURB AND GUTTER
BEGIN TRANSITION TO SPECIAL
TYPE BL CURB AND GUTTER
N 853455.00 E 1214044.77
TBC ELEV = 3254.42
- 10 END TRANSITION TO SPECIAL CURB AND GUTTER
BEGIN SPECIAL TYPE BL CURB AND GUTTER
N 853455.19 E 1214037.77
TBC ELEV = 3254.06 (MATCH EXISTING SIDEWALK)
CURB LP ELEV = 3253.91
- 11 END SPECIAL TYPE BL CURB AND GUTTER
BEGIN TRANSITION TO TYPE B CURB AND GUTTER
N 853457.14 E 1214041.01
TBC ELEV = 3254.06 (MATCH EXISTING SIDEWALK)
CURB LP ELEV = 3253.91
- 12 END TRANSITION TO TYPE B CURB AND GUTTER
BEGIN TYPE B CURB AND GUTTER
N 853449.35 E 1214041.81
TBC ELEV = 3254.36
- 13 END TYPE B CURB AND GUTTER
BEGIN 7' R CURB FILLET
N 853439.01 E 1214031.42
TBC ELEV = 3254.28
- 14 END 7' R CURB FILLET
BEGIN TYPE B CURB AND GUTTER
N 853438.85 E 1214049.88
TBC ELEV = 3253.93
FL = 3253.53

- 15 END STANDARD TYPE B CURB AND GUTTER
N 853435.51 E 1214045.21
TBC ELEV = 3253.65 (MATCH EXISTING)
FL ELEV = 3253.55+/-
- 16 BEGIN 4' CONCRETE DRAIN PAN
N 853434.77 E 1214037.07
FL = 3253.48
- 17 4' CONCRETE DRAIN PAN
N 853433.30 E 1214065.66
FL = 3253.33
- 18 4' CONCRETE DRAIN PAN
N 853431.57 E 1214143.79
FL = 3253.08
- 19 4' CONCRETE DRAIN PAN
N 853428.12 E 1214237.60
FL = 3252.82
- 20 4' CONCRETE DRAIN PAN
N 853426.39 E 1214284.54
FL = 3252.42
- 21 END 4' CONCRETE DRAIN PAN
BEGIN CONCRETE FILLET AND PAN
N 853424.03 E 1214348.61
FL = 3252.11
- 22 END CONCRETE FILLET AND PAN
N 853423.41 E 1214385.67
FL = 3252.04

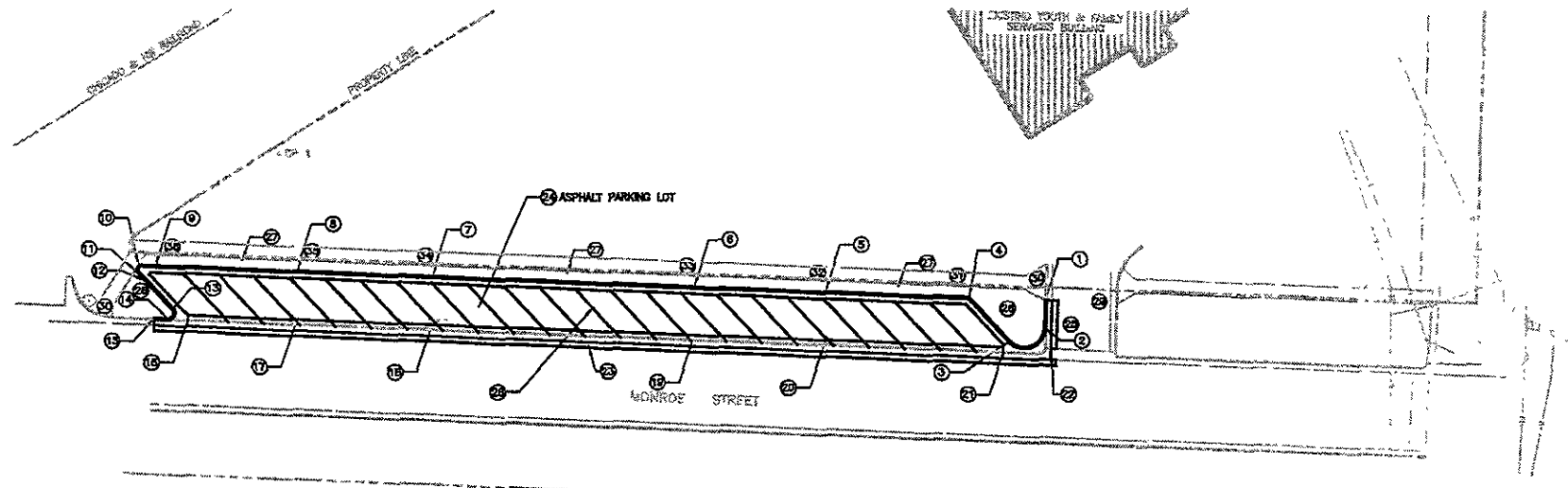
- 23 ASPHALT PATCH (2' X 325')
5" #1 ASPHALT - 21 TON
6" AGGREGATE BASE COURSE - 22 TON
- 24 ASPHALT PARKING LOT
5" #1 ASPHALT - 140 TON
6" AGGREGATE BASE COURSE - 140 TON
- 25 ASPHALT PATCH (2' X 25')
5" #1 ASPHALT - 2 TON
6" AGGREGATE BASE COURSE - 2 TON
- 26 SOGD W/6" OF TOPSOIL - 80 SY
- 27 SOGD BETWEEN EXISTING SIDEWALK
AND PROPOSED CURB AND GUTTER
W/6" OF TOPSOIL - 120 SY
- 28 MARK 23 PARKING SPACES
W/2" YELLOW MARKING PAINT - 535 LF
(AS PER RAPID CITY SPECIFICATIONS
AND PARKING REGULATIONS)
- 29 CONTRACTOR TO MAINTAIN ACCESS THROUGH
EXISTING DRIVEWAY DURING CONSTRUCTION
CORRIDOR OF DRIVEWAY AS NECESSARY TO
COMPLETE CONSTRUCTION ACTIVITIES
- 30 CONTRACTOR TO PLACE SIGN, "SIDEWALK CLOSED"

- 31 EXISTING SIDEWALK
ELEV = 3252.86+/-
- 32 EXISTING SIDEWALK
ELEV = 3253.12+/-
- 33 EXISTING SIDEWALK
ELEV = 3253.18+/-
- 34 EXISTING SIDEWALK
ELEV = 3253.71+/-
- 35 EXISTING SIDEWALK
ELEV = 3253.81+/-
- 36 EXISTING SIDEWALK
ELEV = 3253.10+/-

RECEIVED

APR 26 2007

Rapid City Growth
Management Department



ARCHITECTURE-CIVIL ENGINEERING SURVEYING
101 WEST BULLDOZER
RAPID CITY, SD 57102
TEL: 605.342.6600
WWW.ENVISIONSOUTHDAKOTA.COM



YOUTH FAMILY SERVICES
PARKING EXPANSION

NO. DRAWING: 07SR030 DATE: 04/20/07
Rapid City, South Dakota

REVISIONS

| | |
|--|--|
| | |
| | |
| | |
| | |

SHEET TITLE

SITE PLAN

SHEET

4 OF 4