

**PRELIMINARY**



0 30 60  
1" = 30'  
June 24, 2007

Shared Access, Utility, and Easement Elevation  
Plan Book 20 Page 117

**SURVEYOR'S NOTES**

Utilities shown are from visual inspection, sketches provided by individual service providers and Utility Locates performed by South Dakota One Call, Ticket Number 071640421. The actual location of utilities and service lines may vary from the information shown hereon. We assume no liability for utilities and services that are not marked or are inaccurately depicted by utility locators.

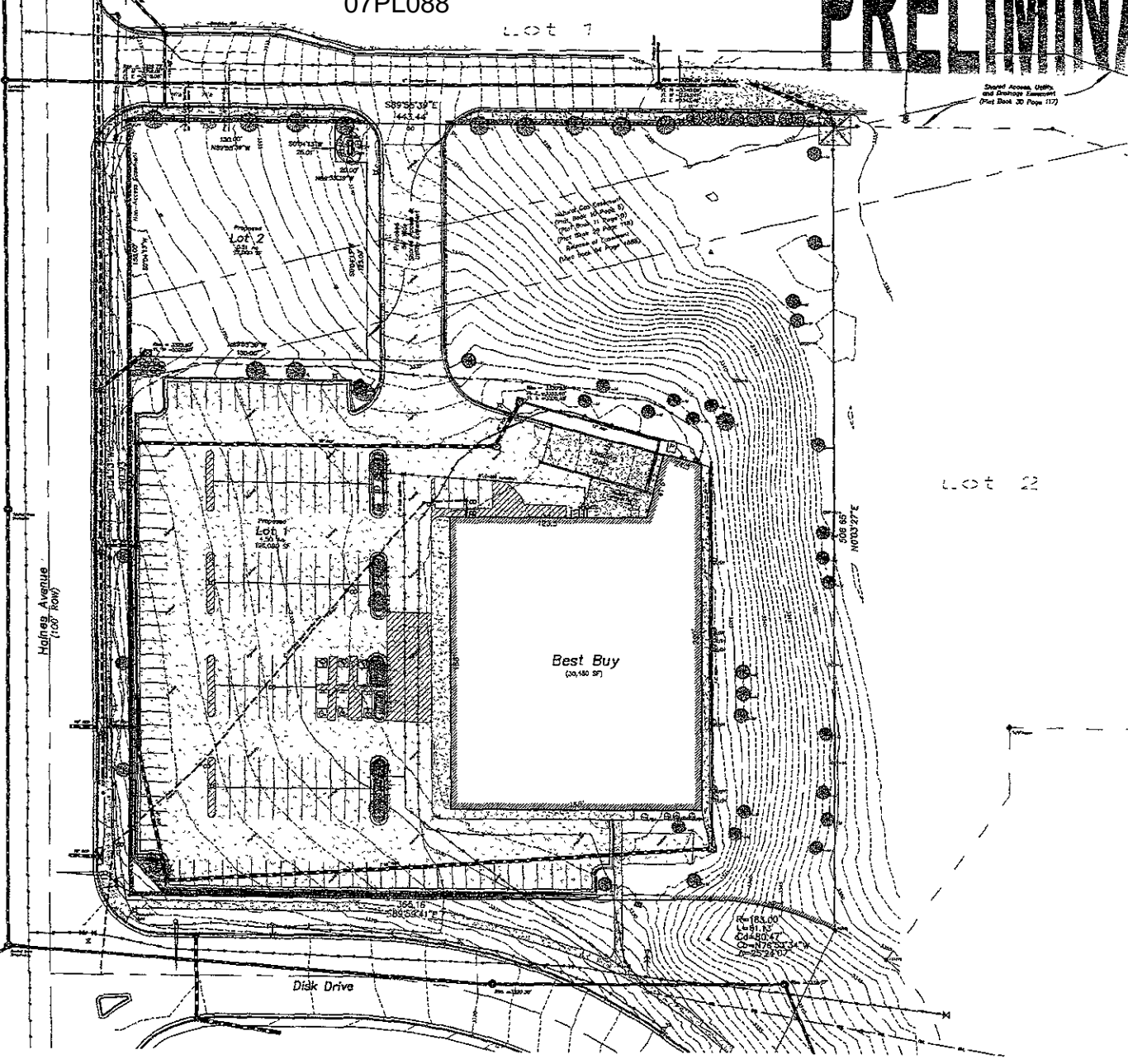
Bench Mark: STA 2039 3336.6' NGVD 29  
Basis of Bearings: GPS Observation

**LEGEND**

- ⊙ = Sanitary Sewer Manhole (Unless noted)
- ⊕ = Sanitary Sewer Service Line Clearance
- ⊕ = Fire Hydrant
- ⊕ = Water Valve
- ⊕ = Curb Stop
- ⊕ = Utility Pole
- ⊕ = Light Pole
- ⊕ = Street Light
- ⊕ = Guy Wire
- ⊕ = Electric Meter
- ⊕ = Electric Box
- ⊕ = Traffic Light
- ⊕ = Telecommunications Pedestal
- ⊕ = Natural Gas Meter
- ⊕ = Sign
- ⊕ = Mail Box
- ⊕ = Pollard
- ⊕ = Fence Line
- ⊕ = Underground Electric
- ⊕ = Overhead Utility Line
- ⊕ = Underground Telephones
- ⊕ = Storm Sewer Line
- ⊕ = Sanitary Sewer Line
- ⊕ = Water Main
- ⊕ = Natural Gas Line
- ⊕ = Found Survey Measurement as noted
- ⊕ = Set Rebar with cap marked "RW Fisk 6265"
- ⊕ = Control Point
- ⊕ = Tree (Coniferous)
- ⊕ = Tree (Deciduous)
- ⊕ = Bush

Lot 1 Landscape Points	
Lot	156,080 sq ft
Buildings	30,480 sq ft
Required points	103,600 pts
27 Medium Trees	27,000 pts
27 Small Trees	13,500 pts
83 Shrubs	20,750 pts
11,790 Grass Area	117,750 pts
<b>TOTAL</b>	<b>179,000 pts</b>
Required points	165,600 pts
surplus	13,400 pts

Lot 1 Parking Requirements (5 spaces per 1,000 SF)	
Buildings	30,480 sq ft
Required spaces	153 spaces
Regular spaces	153 spaces
Handicapped spaces	8 spaces
<b>TOTAL</b>	<b>164 spaces</b>



**Fisk Land Surveying & Consulting Engineers, Inc.**  
1022 4th Street - P.O. Box 814  
Rapid City, South Dakota 57709  
(605) 346-1112 (fx)  
info@fiskland.com

Topographic Map and Boundary Survey  
Lots 1 & 2  
formerly all of lot BR of Block 3  
located in the NW1/4 NE1/4 of Section 25, T2N, R7E, B1H.M.  
Penny City Pennington County, South Dakota

Surveyed by: BLM  
Date: 6/21/07  
Drawn by: BLRW  
Date: 6/24/07  
Checked by: WFM  
Revisions:

Project No.  
07-06-05

Sheet  
1  
of  
1