

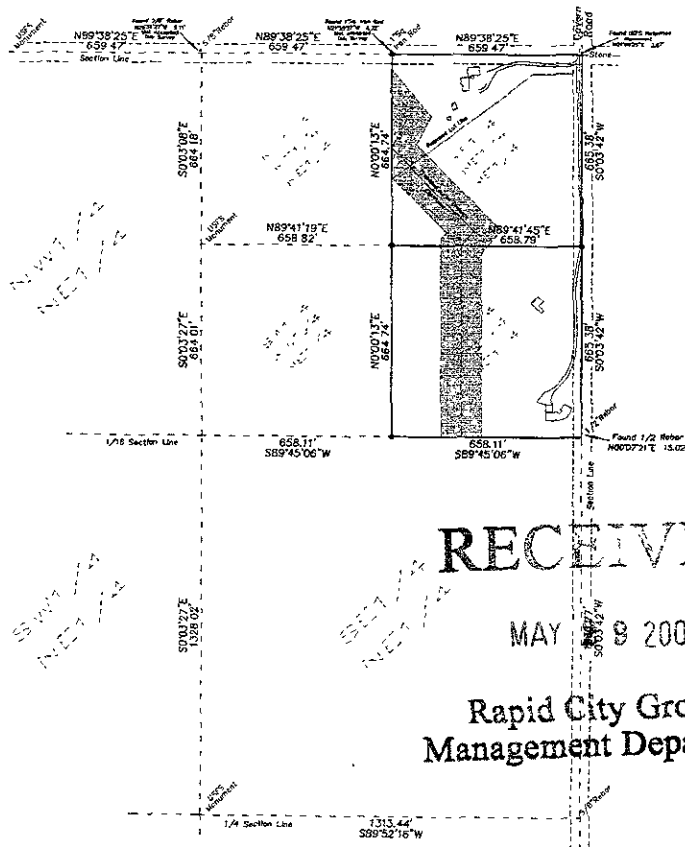
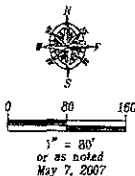
SITE PLAN

LEGEND

- Found Survey Monument as noted
- ⊙ Set Rebar with cap marked "RW Fisk 6565"
- Found Stone
- ▲ Control Point

SURVEYOR'S NOTES

See Plot Book 24 Page 36 for record information.
 Basis of Bearings:
 GPS Observation
 Utility and Minor Drainage Easements at the interior side of all lot lines.
 All Major Drainage Easements shown herein shall be kept free of all obstructions including but not limited to buildings, wells, fences, hedgrows, trees & shrubs. These easements grant to all public authorities the right to construct, operate, maintain, inspect, and raise such improvements and structures as it deems expedient to facilitate drainage from any source.



RECEIVED

MAY 9 2007

Rapid City Growth Management Department

BOUNDARY SURVEY

Scale: 1"=200'

Site Plan and Boundary Survey
 NE 1/4 NE 1/4 NE 1/4 and SW 1/4 NE 1/4 NE 1/4
 all located in
 Section 14, T1N, R6E, B.H.M.,
 Pennington County, South Dakota

1622 Main Street
 P.O. Box 2054
 Rapid City, South Dakota
 57709
 (605) 348-1036
 (605) 347-1117 (fx)

Fisk Land Surveying & Consulting Engineers, Inc.

Surveyed by	B.L.M.I.
Date	4/25/07
Drawn by	R.W.B.
Date	5/7/07
Checked by	R.W.
Revisions	
Project No.	07-04-08
Sheet	1 of 1