

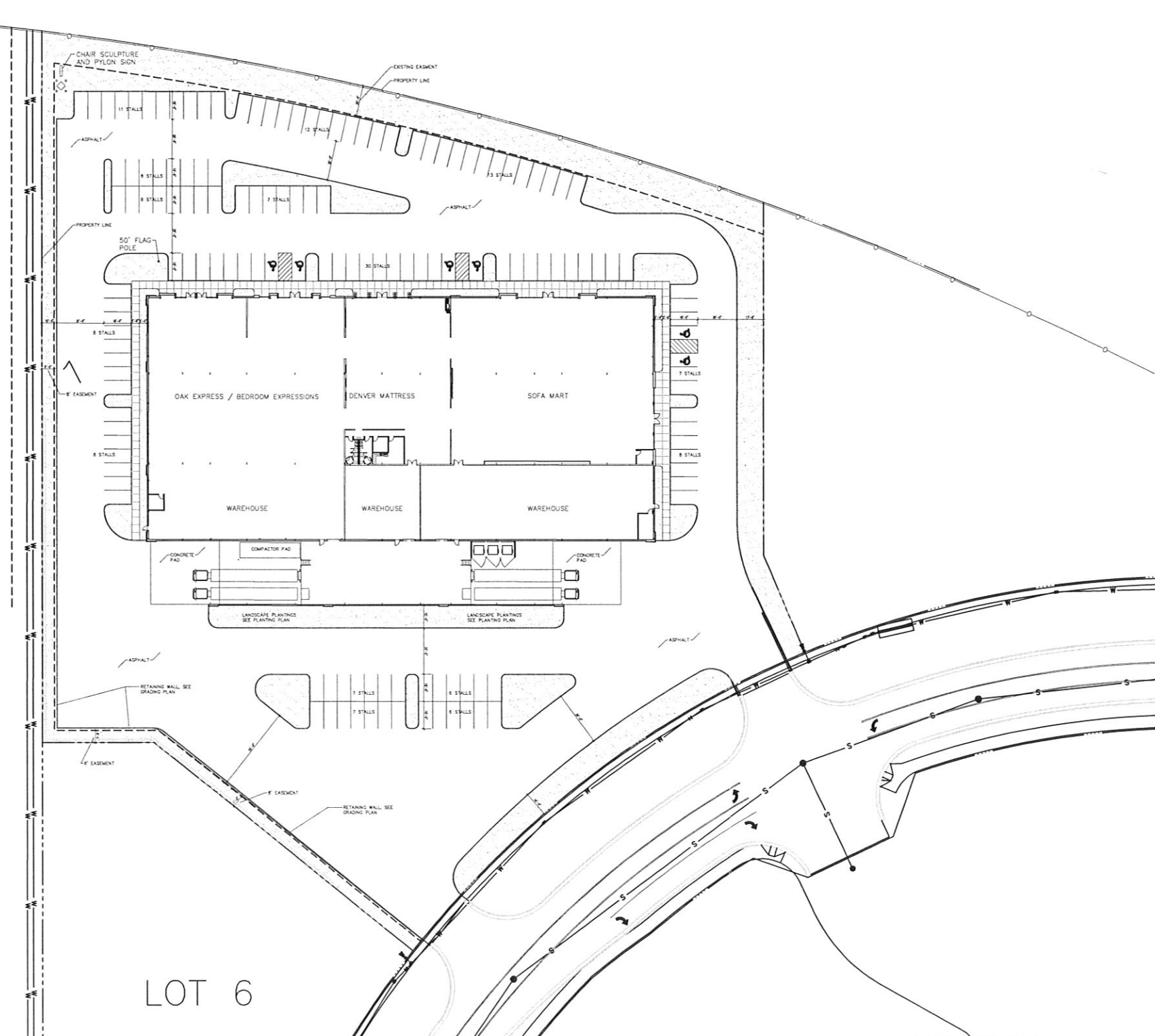
SITE PLAN  
 FURNITURE ROW  
 CITY OF RAPID CITY  
 COUNTY OF PENNINGTON  
 STATE OF SOUTH DAKOTA  
 SHEET 2 OF 8

LOT 4

B L O C K

LOT 3

LOT 6



PARKING CALCS.	
SOFA MART (RETAIL)	16,802 s.f.
DENVER MATTRESS (RETAIL)	5,481 s.f.
BED. EXP. & O. EXP. (RETAIL)	14,171 s.f.
TOTAL RETAIL SQUARE FEET =	36,454 s.f.
TOTAL STORAGE S.F. =	16,278 s.f.
TOTAL BUILDING S.F. (NET) =	52,732 s.f.
SPACES REQ'D FOR RETAIL - (36,454/1000)*2.6 =	95
SPACES REQ'D FOR STORAGE - (16,278/1000)*0.25 =	5
TOTAL SPACES - (REQUIRED) =	100
TOTAL SPACES - (PROVIDED) =	146

SITE AREA CALCS.	
TOTAL SITE AREA = 219,807 s.f.	5.046 AC
LANDSCAPE AREA = 40,250 s.f.	.924 AC
LANDSCAPE % = 40,250/219,807	18.3%
PARKING/DRIVES/SIDEWALK AREA = 111,802 s.f.	2.567 AC
PARKING/DRIVES/SIDEWALK % = 111,802/219,807	50.9%
LOADING DOCK/ACCESS = 14,140 s.f.	.324 AC
LOADING DOCK/ACCESS = 14,140/219,807	6.4%
BUILDING AREA = 53,615 s.f. (GROSS)	1.231 AC
BUILDING % = 53,615/219,807	24.4%
FLOOR AREA RATIO (FAR) = 53,615/219,807	.24
SURVEYED ACREAGE AND S.F. = 5.046 ACRES - 219,807 s.f.	100%

GENERAL NOTES

1. SEE LANDSCAPE PLAN A-4 FOR ADDITIONAL INFORMATION
2. SEE SHEET A-3 FOR TOPOGRAPHIC AND EASEMENT INFORMATION

**FURNITURE ROW**

924 EGLIN STREET  
 RAPID CITY, SD 57701

**SERVICEDESIGN**

A New Design Group Company  
 1600 Wynkoop Street, Suite 100  
 Denver, Colorado 80209  
 Phone 720.904.0440 Fax 720.932.7561

THE IDEAS, DRAWINGS AND SPECIFICATIONS CONTAINED HEREIN ARE COPYRIGHTED BY NEWMAN CAWENDER & DOINE. WRITTEN AUTHORIZATION IS REQUIRED FOR ANY REPRODUCTION. USE WITHOUT THE ARCHITECT'S WRITTEN CONSENT CONSTITUTE.

NO.	REVISION / SUBMISSIONS	DATE
1	PLANNED DEVELOPMENT REVIEW	5-11-07
2	REVISED PCD	7-6-07

RECEIVED  
 JUL 16 2007  
 Rapid City Growth  
 Management Department

PROJECT NUMBER	DATE
207-003.00	7-6-07

SITE PLAN - ARCHITECTURAL

DRAWING NUMBER

**A-2**

