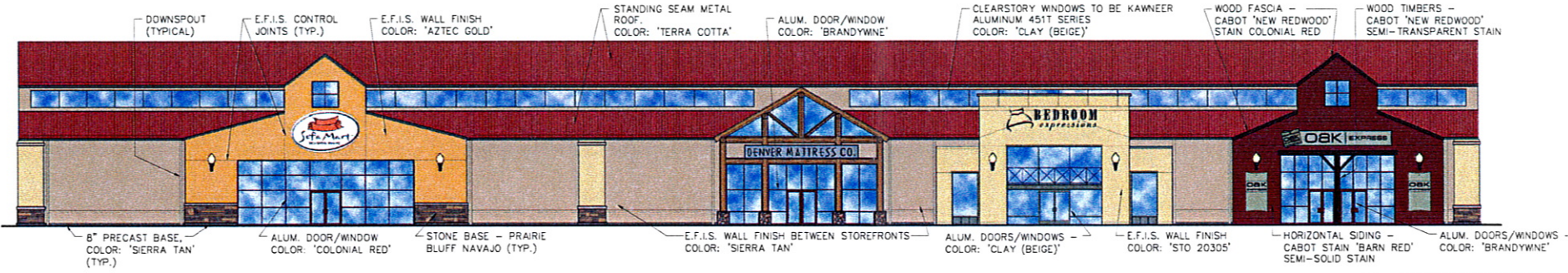


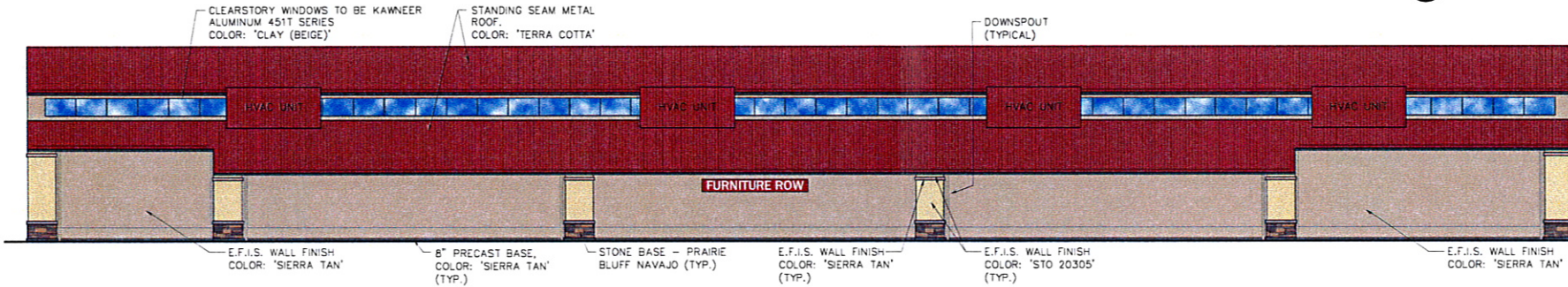
# SITE PLAN FURNITURE ROW

CITY OF RAPID CITY  
COUNTY OF PENNINGTON  
STATE OF SOUTH DAKOTA

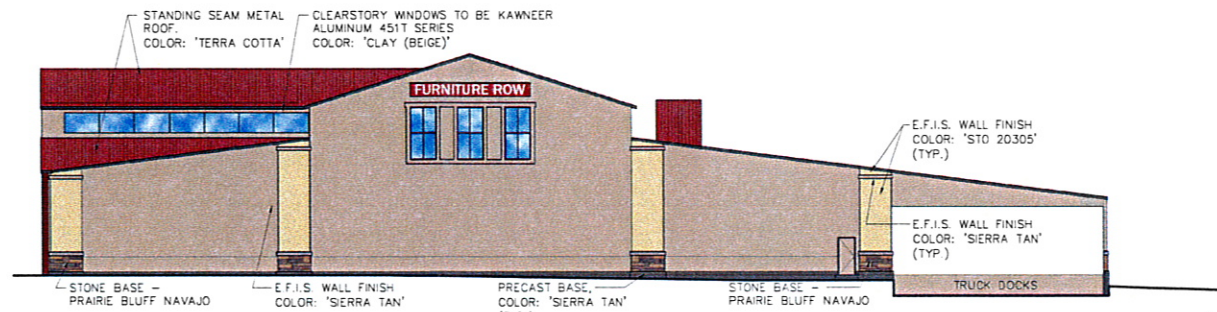
SHEET 5 OF 8



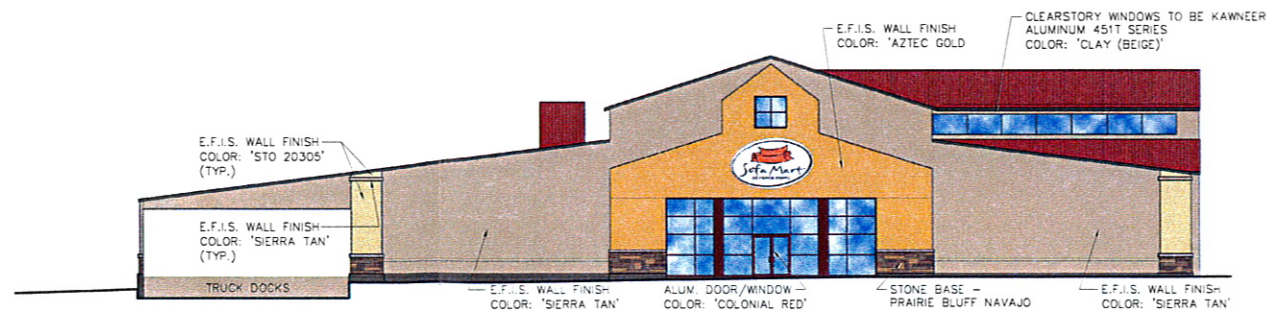
1 NORTH ELEVATION  
1/16"=1'-0"



2 SOUTH ELEVATION  
1/16"=1'-0"



3 WEST ELEVATION  
1/16"=1'-0"



4 EAST ELEVATION  
1/16"=1'-0"

FURNITURE ROW

924 EGLIN STREET  
RAPID CITY, SD 57701

**SERVICEDESIGN**

A New Design Group Company  
1600 Wynkoop Street, Suite 100  
Denver, Colorado 80209  
Phone 720.904.0440 Fax 720.932.7561

THE IDEAL DRAWINGS AND SPECIFICATIONS CONTAINED HEREIN ARE COPYRIGHTED BY A EDMAN CAWENDER & DOAK, L.P. WRITTEN AUTHORIZATION IS REQUIRED FOR ANY REPRODUCTION, USE WITHOUT THE ARCHITECT'S WRITTEN CONSENT CONSTITUTE.

RECEIVED

JUL 1 2007

Rapid City Growth  
Management Department

NO. REVISION / SUBMISSIONS	DATE
1 PLANNED DEVELOPMENT REVIEW	5-11-07
2 REVISED PCD	7-6-07

PROJECT NUMBER	DATE
207-003.00	7-6-07

ELEVATIONS

DRAWING NUMBER

A-5