

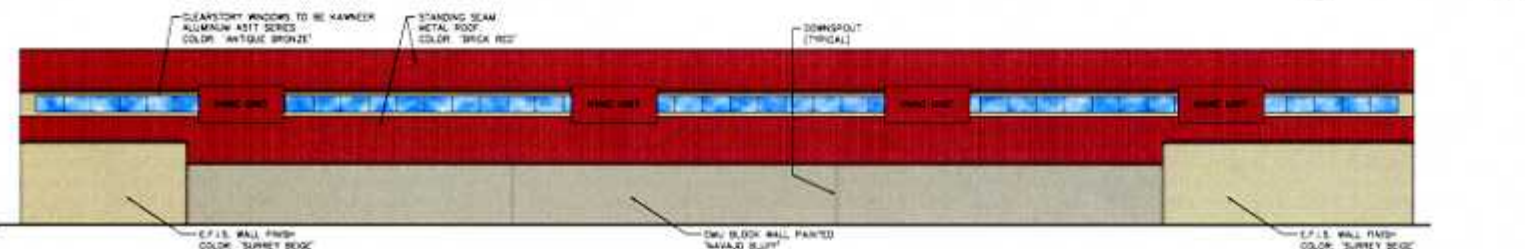
SITE PLAN FURNITURE ROW

CITY OF RAPID CITY
COUNTY OF PENNINGTON
STATE OF SOUTH DAKOTA

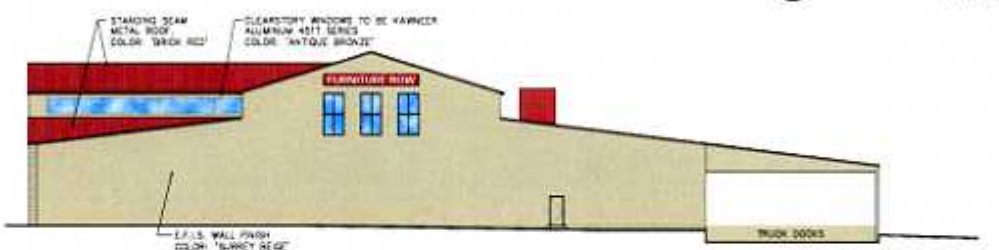
SHEET 5 OF 8



1 NORTH ELEVATION
1/8"=1'-0"



2 SOUTH ELEVATION
1/8"=1'-0"



3 WEST ELEVATION
1/8"=1'-0"



4 EAST ELEVATION
1/8"=1'-0"

FURNITURE ROW

924 EGLIN STREET
RAPID CITY, SD 57701

serviceDESIGN

A New Design Group Company
1506 W. 14th Street, Suite 100
Sioux Falls, SD 57105
Phone: 605.336.4444 Fax: 605.336.7961

THESE PLANS AND SPECIFICATIONS ARE PRELIMINARY AND SUBJECT TO CHANGE WITHOUT NOTICE. THE CONTRACTOR SHALL BE RESPONSIBLE FOR VERIFYING ALL DIMENSIONS AND CONDITIONS OF THE SITE PRIOR TO CONSTRUCTION.

NO. REVISION / SUBMISSION	DATE
1 PLANNED DEVELOPMENT REVIEW	5-11-07

PROJECT NUMBER	DATE
207-003.00	5-11-07
DRAWING TITLE	

ELEVATIONS

DRAWING NUMBER

A-5