

EX. BILLBOARD

E. ANAMOSA ST.

1000.00'

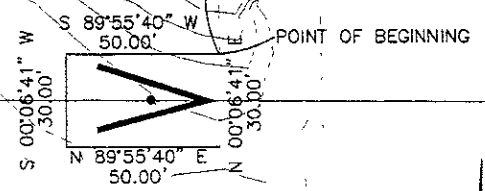
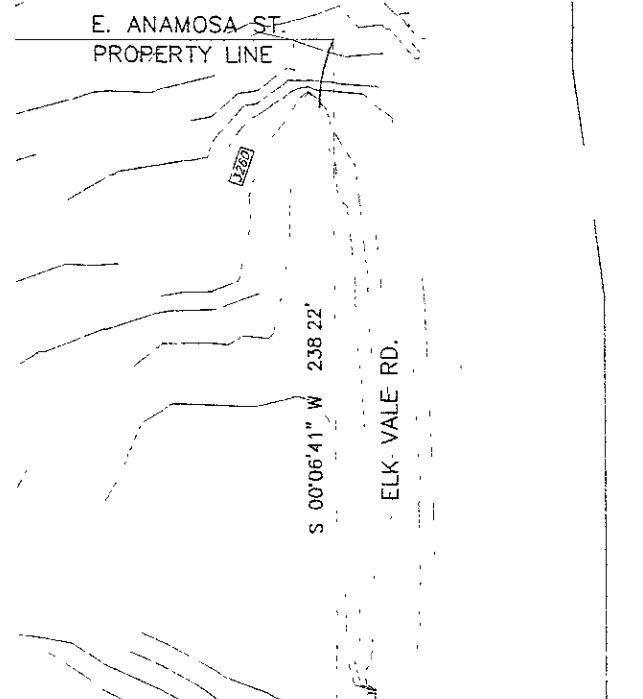
ELK VALE ROAD

880'

EX. BILLBOARD

LEGAL DESCRIPTION: COMMENCING AT A POINT, SAID BEING THE NORTHEAST CORNER OF THE INTERSECTION OF EAST ANAMOSA STREET AND ELK VALE ROAD; THENCE S00°06'41"W 238.22' TO THE POINT OF BEGINNING THENCE S89°55'40"W A DISTANCE OF 50'; THENCE S00°06'41"W A DISTANCE OF 30'; THENCE N89°55'40"E A DISTANCE OF 50'; THENCE N00°06'41"E A DISTANCE OF 30' TO THE POINT OF BEGINNING, THE WHOLE ENCLOSING AN AREA OF 0.03 ACRES

EXHIBIT A
 A TRACT OF LAND LOCATED IN THE
 NE1/4NE1/4 SECTION 4, T1N, R8E, BHM,
 RAPID CITY, PENNINGTON COUNTY, SOUTH
 DAKOTA



SCALE 1" = 40'



DREAM DESIGN INTERNATIONAL, INC.
 PROFESSIONAL STRUCTURAL & CIVIL ENGINEERING CONSULTANTS
 304 KENNEDY CITY BL., SUITE 4, RAPID CITY, SD 57701
 P.O. BOX 348-0008 P.O. BOX 348-0008 RAILROAD AVENUE, RAILROAD AVENUE