

SITE PLAN FURNITURE ROW

CITY OF RAPID CITY
COUNTY OF PENNINGTON
STATE OF SOUTH DAKOTA

SHEET 5 OF 8

FURNITURE ROW

924 EGLIN STREET
RAPID CITY, SD 57701

SERVICEDESIGN

A New Design Group Company
1600 Wynkoop Street, Suite 100
Denver, Colorado 80209
Phone 720.904.0440 Fax 720.932-7561

THE IDEAS, DRAWINGS AND SPECIFICATIONS CONTAINED HEREIN ARE COPYRIGHTED BY NEWMAN CAVENDER & DOANE. WRITTEN AUTHORIZATION IS REQUIRED FOR ANY REPRODUCTION. USE WITHOUT THE ARCHITECTS WRITTEN CONSENT CONSTITUTE.

NO. REVISION / SUBMISSIONS DATE

1 PLANNED DEVELOPMENT REVIEW 5-11-07

PROJECT NUMBER DATE

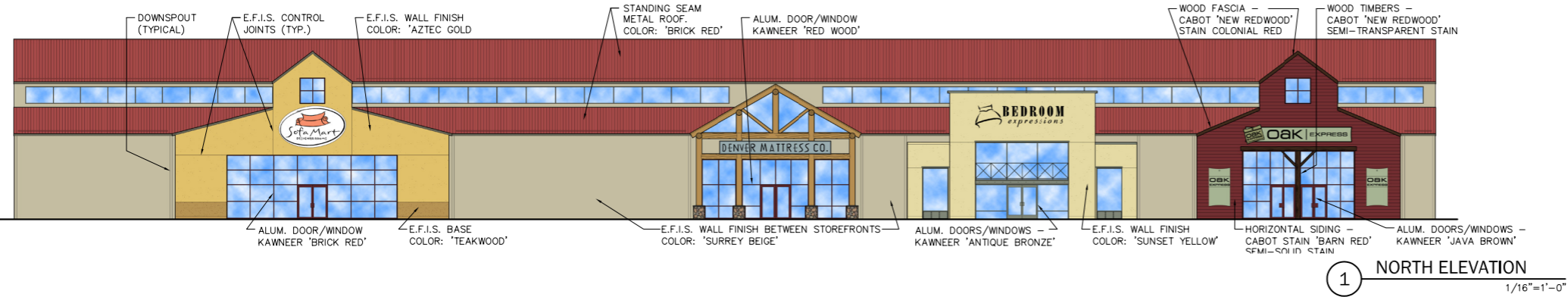
207-003.00 5-11-07

DRAWING TITLE

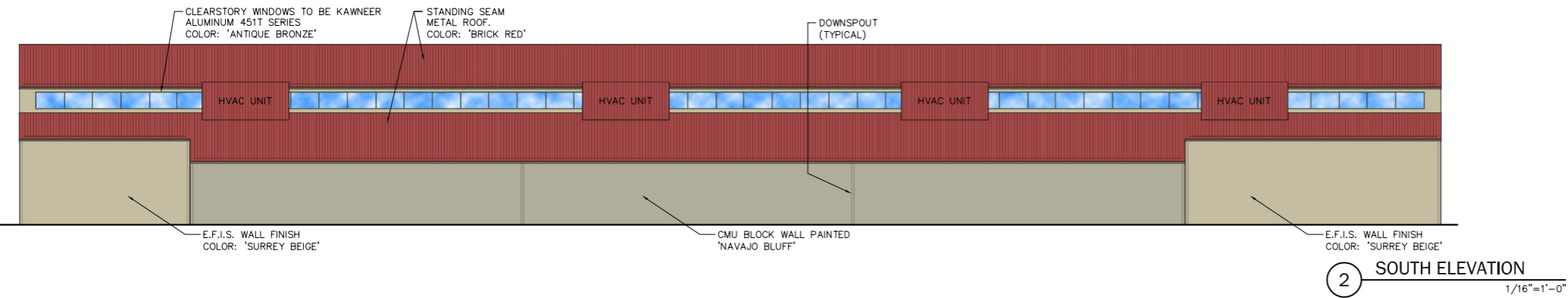
ELEVATIONS

DRAWING NUMBER

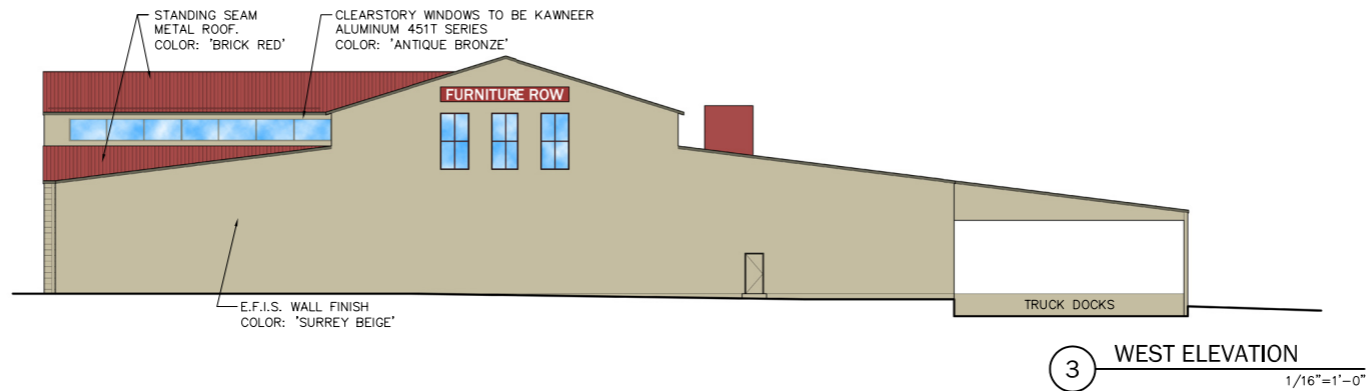
A-5



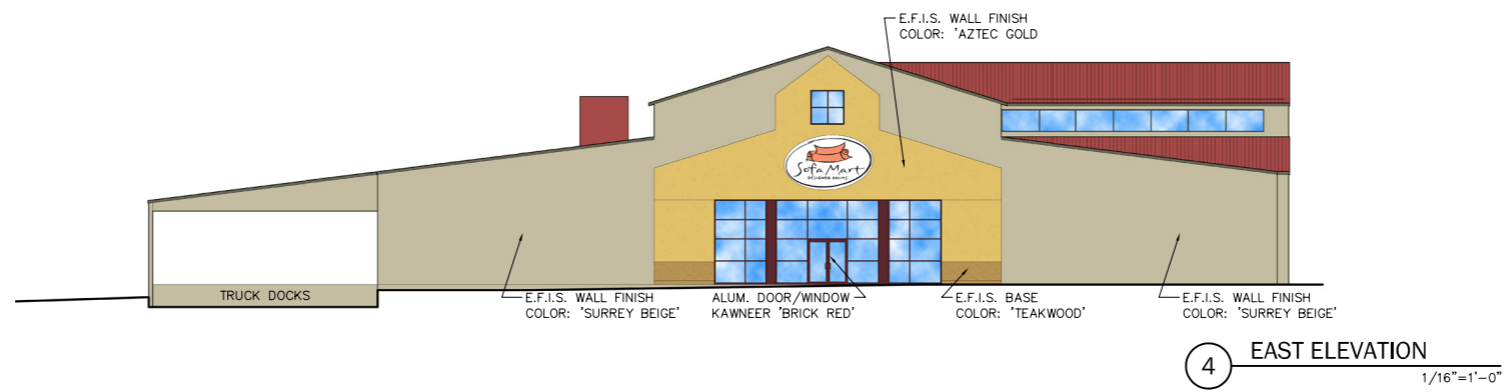
1 NORTH ELEVATION
1/16"=1'-0"



2 SOUTH ELEVATION
1/16"=1'-0"



3 WEST ELEVATION
1/16"=1'-0"



4 EAST ELEVATION
1/16"=1'-0"