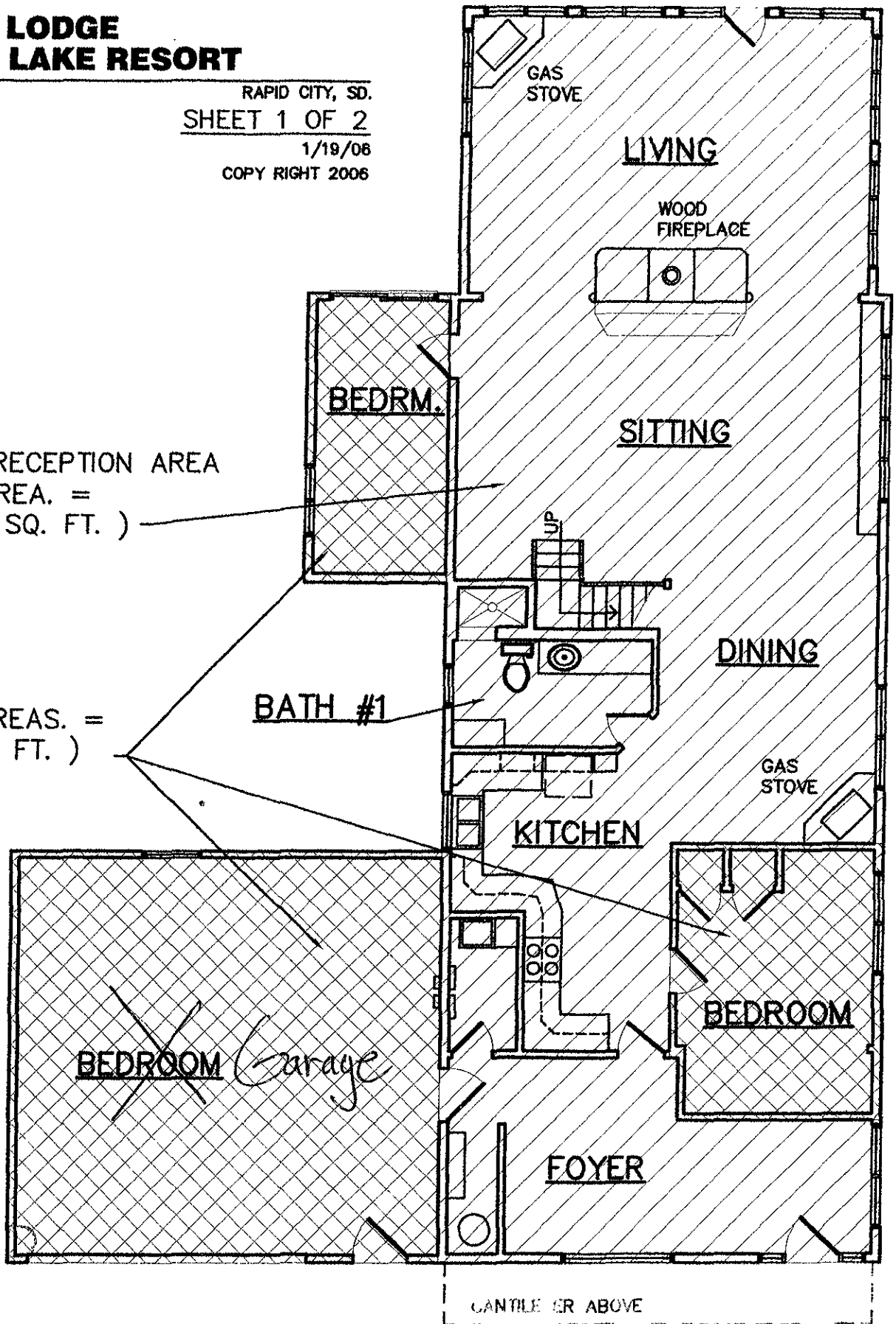


CATTAIL LODGE CANYON LAKE RESORT

RAPID CITY, SD.
SHEET 1 OF 2
1/19/08
COPY RIGHT 2006

PRIVATE RECEPTION AREA
(TOTAL AREA. =
1,556.0.0 SQ. FT.)

MOTEL
(TOTAL AREAS. =
880.0 SQ. FT.)



RECEIVED

MAY 11 2007

Rapid City Growth
Management Department

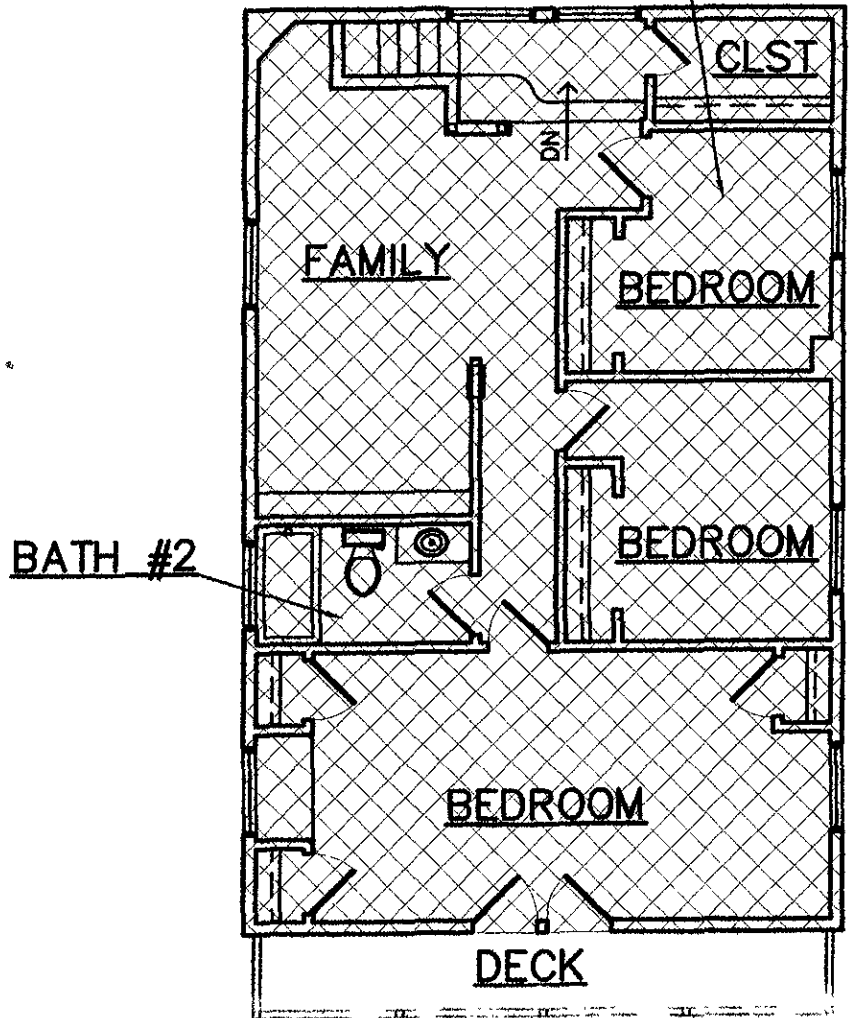
FIRST FLOOR PLAN

1/8" = 1'-0"

CATTAIL LODGE CANYON LAKE RESORT

RAPID CITY, SD.
SHEET 2 OF 2
1/19/06
COPY RIGHT 2006

MOTEL
(TOTAL AREA = 960.0 SQ. FT.)



RECEIVED

MAY 11 2007

Rapid City Growth
Management Department

SECOND FLOOR PLAN

1/8" = 1'-0"