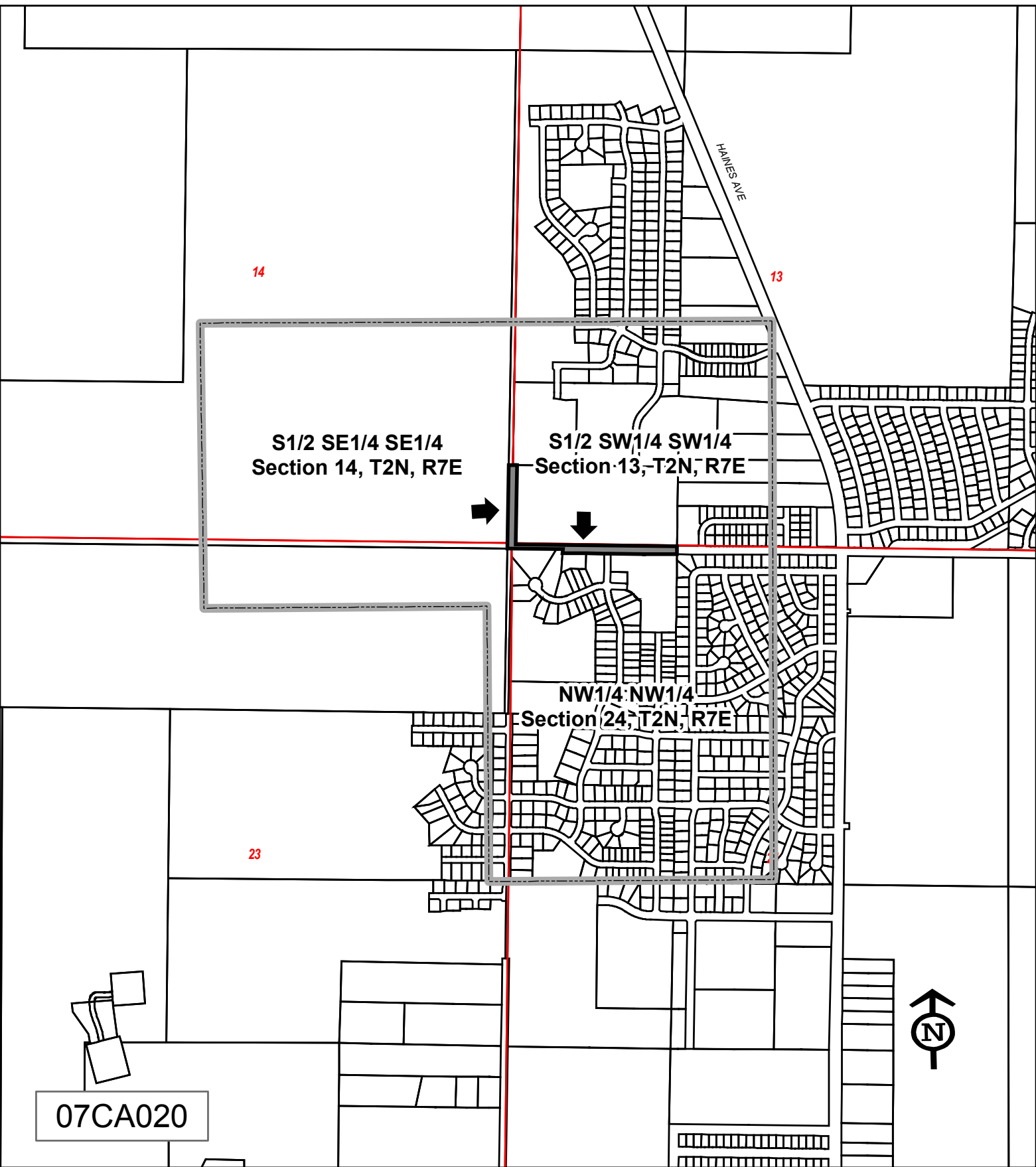


"Exhibit A" to the Resolution Amending the Comprehensive Plan of the City of Rapid City



14

13

S1/2 SE1/4 SE1/4
Section 14, T2N, R7E

S1/2 SW1/4 SW1/4
Section 13, T2N, R7E

NW1/4: NW1/4
Section 24, T2N, R7E

23

HAMES AVE



07CA020