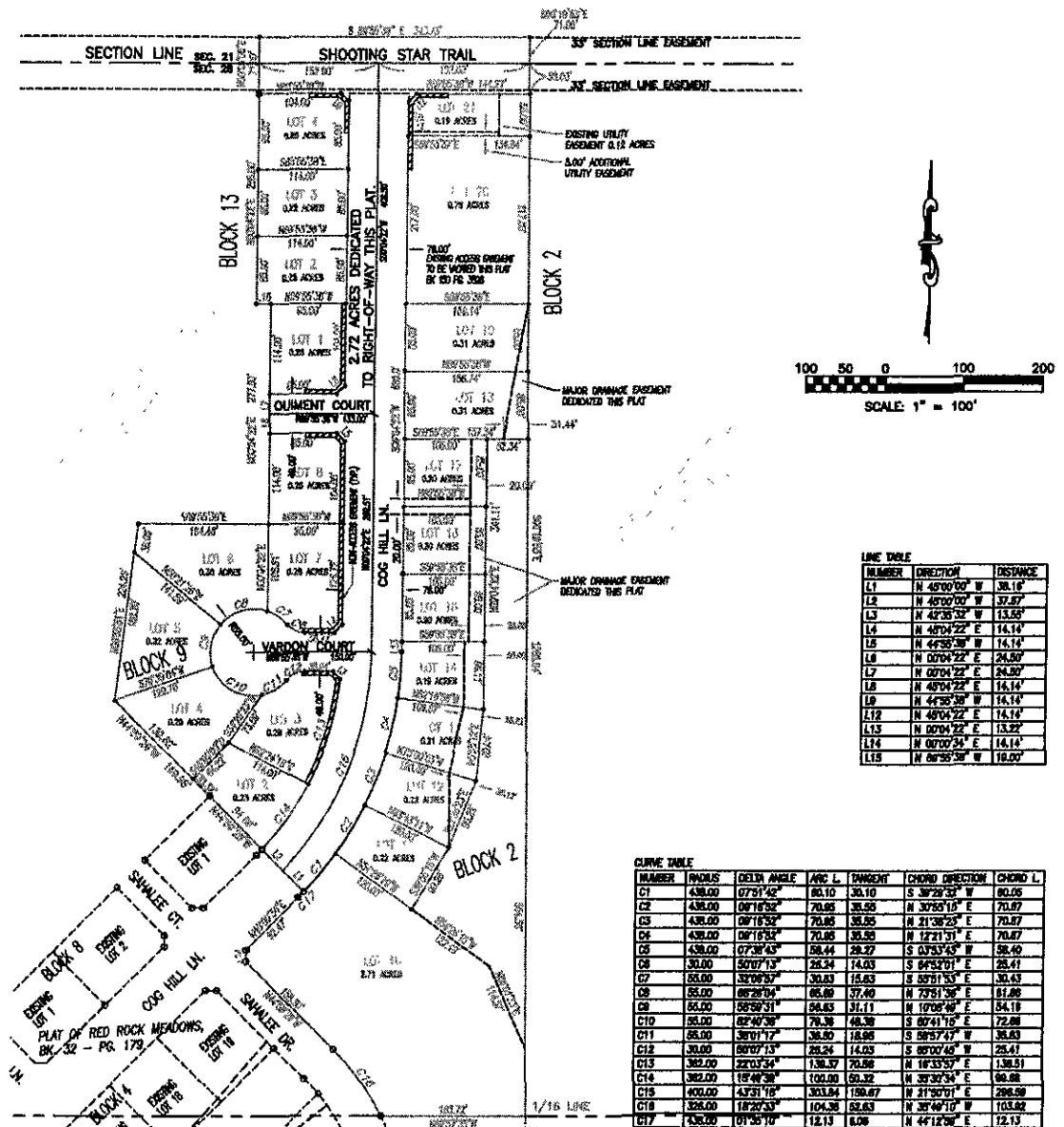


PLAT OF RED ROCK MEADOWS SUBDIVISION
AND DEDICATION OF STREETS

LOTS 10 THRU 21, BLOCK 2; LOTS 2 THRU 8, BLOCK 9; LOTS 1 THRU 4, BLOCK 13;
ALL LOCATED IN THE E 1/2 NW 1/4 NW 1/4 SECTION 28, T.1N., R.7E., B.H.M., RAPID CITY,
PENNINGTON COUNTY, SOUTH DAKOTA



LINE TABLE

NUMBER	DIRECTION	DISTANCE
L1	N 45°00'00" W	38.18'
L2	N 45°00'00" W	37.87'
L3	N 42°36'32" W	13.58'
L4	N 45°04'22" E	14.14'
L5	N 44°35'30" W	14.14'
L6	N 00°04'22" E	24.00'
L7	N 00°04'22" E	24.00'
L8	N 45°04'22" E	14.14'
L9	N 44°35'30" W	14.14'
L10	N 45°04'22" E	14.14'
L11	N 00°04'22" E	13.22'
L12	N 00°04'22" E	14.14'
L13	N 45°04'22" E	14.14'
L14	N 44°35'30" W	14.14'

CURVE TABLE

NUMBER	RADIUS	DELTA ANGLE	ARC L	TANGENT	CHORD DIRECTION	CHORD L
C1	438.00	07°51'42"	80.10	30.10	S 32°23'32" W	80.05
C2	438.00	09°16'52"	70.86	36.50	N 30°53'10" E	70.87
C3	438.00	09°16'52"	70.86	36.50	N 21°38'23" E	70.87
C4	438.00	09°16'52"	70.86	36.50	N 12°21'31" E	70.87
C5	438.00	07°38'43"	58.44	28.27	S 03°33'43" W	58.40
C6	30.00	50°07'13"	28.24	14.03	S 69°37'01" E	28.41
C7	55.00	33°08'57"	30.83	15.83	S 56°17'53" E	30.43
C8	55.00	66°28'04"	66.80	37.40	N 73°51'36" E	61.86
C9	55.00	56°58'31"	58.63	31.11	N 17°08'46" E	54.19
C10	55.00	62°40'38"	76.38	48.26	S 60°41'16" E	72.88
C11	55.00	36°01'17"	36.50	18.86	S 56°57'47" W	36.63
C12	38.00	60°07'13"	28.24	14.03	S 60°04'48" E	28.41
C13	382.00	22°03'54"	138.17	70.86	N 12°33'57" E	138.91
C14	382.00	18°46'38"	100.00	50.32	N 30°38'34" E	94.88
C15	400.00	43°31'16"	303.54	198.67	N 21°50'01" E	298.08
C16	328.00	18°27'53"	104.38	52.63	N 37°40'10" E	103.82
C17	438.00	09°25'10"	12.13	6.08	N 44°12'56" E	12.13

RECEIVED
MAY 14 2007
Rapid City Growth Management Department
PRELIMINARY FOR REVIEW ONLY

NOTES:

1. MAJOR DRAINAGE AND UTILITY EASEMENTS ARE AS SHOWN ESTABLISHED IF NONE ON THE INTERIOR SIDE OF ALL LOT LINES AND RIGHT-OF-WAY. (EXCEPT INSURE MAJOR DRAINAGE EASEMENTS ARE LOCATED)
2. TOTAL PLATTED AREA: 11.38 ACRES; LOTS: 2,88 ACRES; PUBLIC RIGHT-OF-WAY: 2.72 ACRES.
3. ANY MAJOR DRAINAGE EASEMENTS SHOWN HEREON
4. ALL BUILDERS SHALL MAINTAIN EXISTING DRAINAGE FACILITIES IN ACCORDANCE TO APPROVED CONSTRUCTION PLANS.
5. ACREAGE SHOWN ON LOTS INCLUDE EASEMENTS.
6. NO BASEMENT FLOOR ELEVATIONS SHALL BE CONSTRUCTED LOWER THAN ELEVATION 3841.