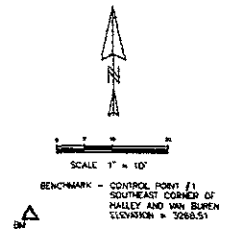
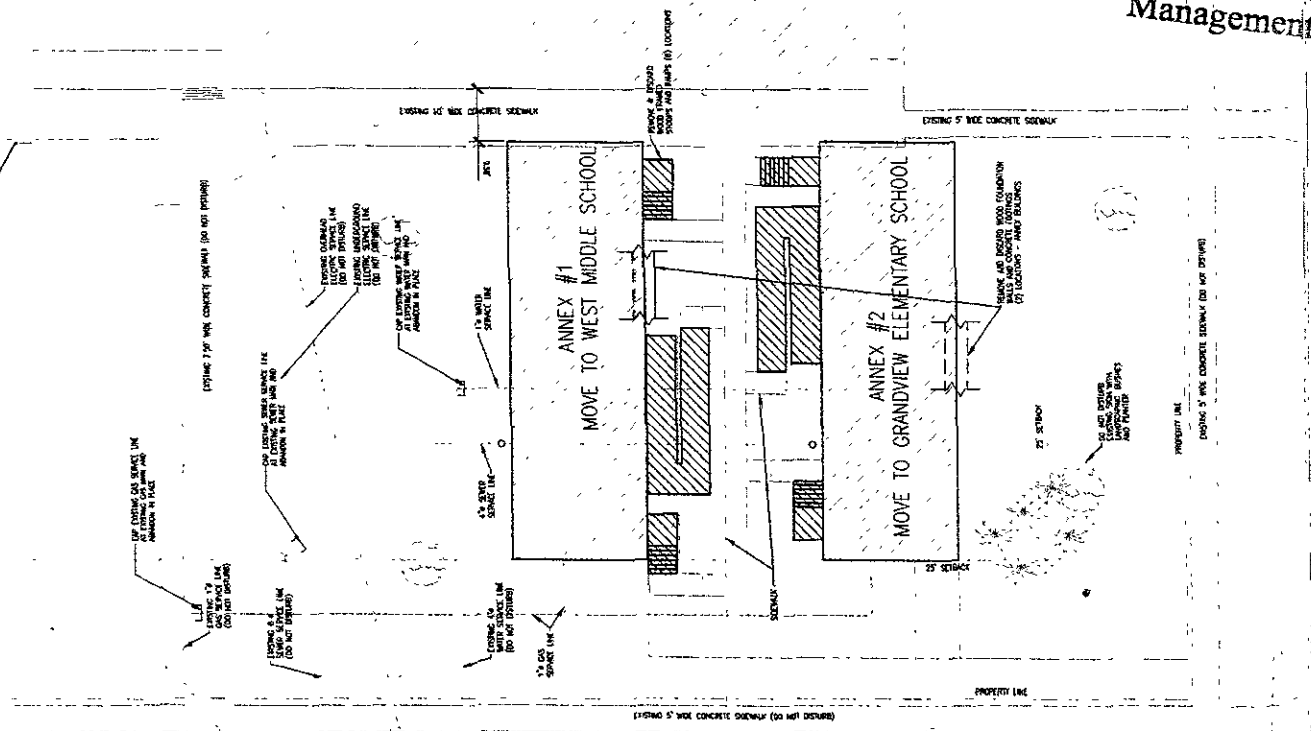


RECEIVED

MAY 18 2007

Rapid City Growth Management Department

EXISTING GENERAL BEADLE SCHOOL



ALL CONSTRUCTION SHALL CONFORM TO THE CURRENT EDITION OF THE CITY OF RAPID CITY STANDARD SPECIFICATIONS

CONTRACTOR SHALL DEMO AND DISCARD ALL WOOD STOOPS AND RAMPS. DISCONNECT AND CAP ALL UTILITY LINES AS REQUIRED TO RELOCATE ANNEXES. UNDERGROUND UTILITIES SHALL REMAIN IN PLACE, AND WILL BE REMOVED UNDER A SEPARATE CONTRACT

**GRANDVIEW ELEMENTARY AND WEST MIDDLE SCHOOL**  
 RAPID CITY S.D. DAKOTA

**ANNEX RELOCATION AND DEMOLITION PLAN**

(COMPLETED BY \_\_\_\_\_, 2007)

PROJECT NO. 07-16G DRAWING NO

DATE: 06/17/07  
SCALE: AS SHOWN

C1

If this drawing is not 24" x 36" it is a reduced print