

F-650 R 07SR035

Rapid City Growth Management Department

North Street

6" Water Service
6 ft. cover

Install 6x6 tapping tee, gate valve and thrust block (4.5 sf), extend 6" CI 200 PVC water main to bldg. Coordinate location w/ MEP plans. Include in Traffic Control Plan.

Remove 38' l
Install 26 ft. Conc. Approa

Back of Ex. Curb

Install 4 ft. sidewalk

25' Reinfc Concrete Approach

U/P UNDERGROUND ELECTRICAL

Landscape Island 486 sf +/-

4 ft. sidewalk

Pave to prop line. Typ.

Light

DRIVE

Hyd

FG 73.

2ea. H-Park

CSU Properties Oct 17, 2006

Asphalt

Flagpole

73.

Slope to Drain

10'

LOT RU9A

Landscape Area

Van Accessible H-Park

RECEIVED

APR 03 2007

Rapid City Growth Management Department

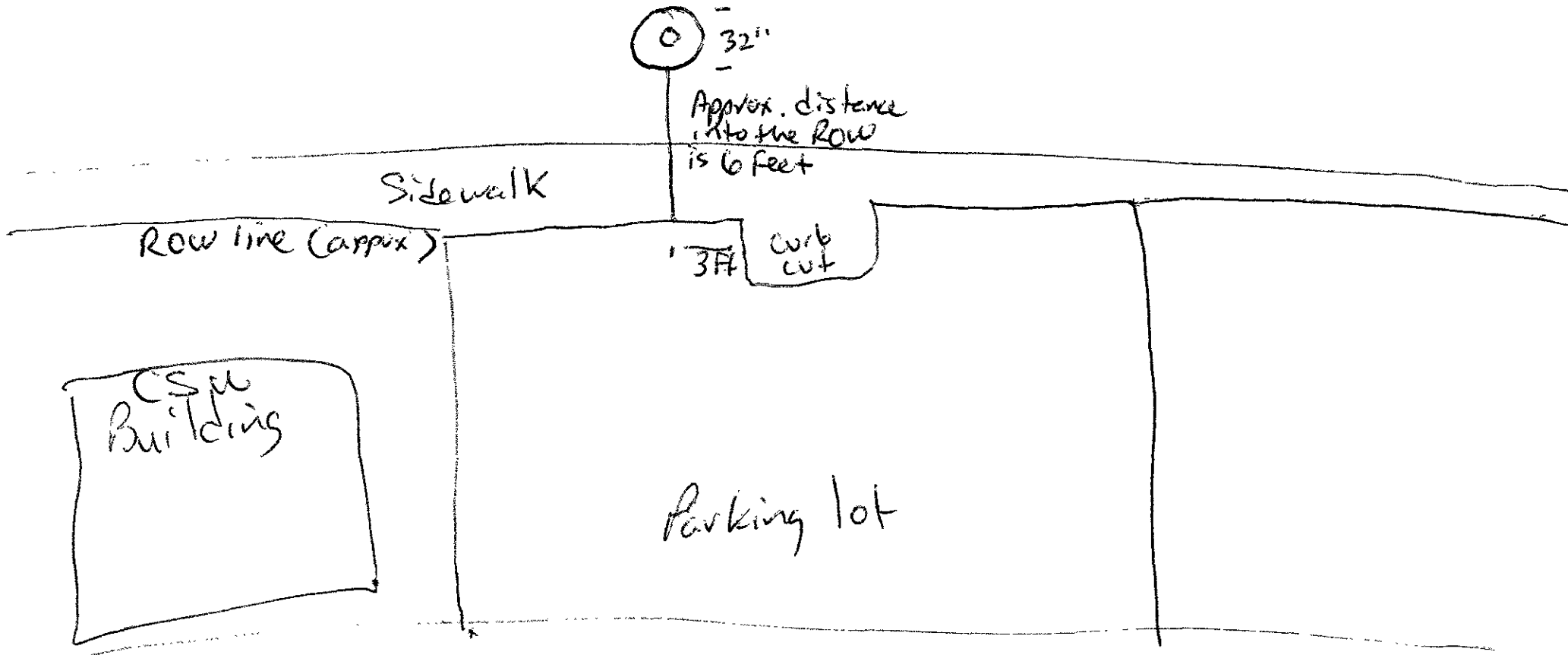
Sheet Flow

32"

6 ft. approx. distance into the ROW

But

5th Street



RECEIVED

MAY 24 2007

Rapid City Growth
Management Department



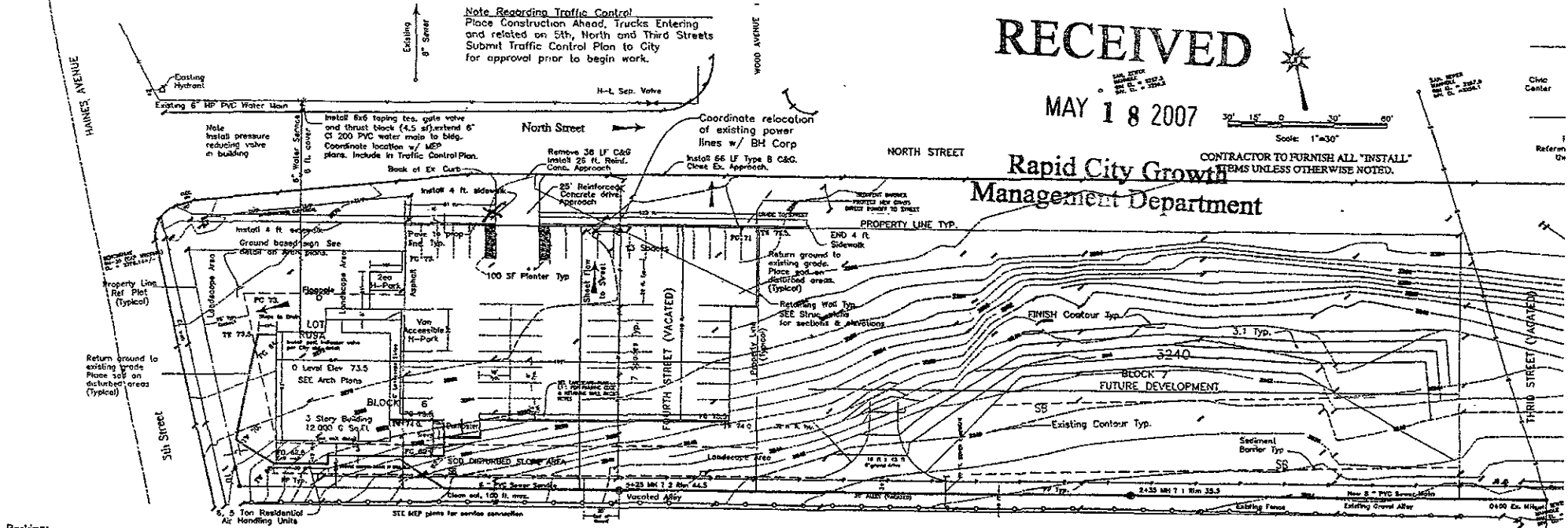
RECEIVED

MAY 18 2007

CONTRACTOR TO FURNISH ALL "INSTALL" ITEMS UNLESS OTHERWISE NOTED.

Rapid City Growth Management Department

Note Regarding Traffic Control
Place Construction Ahead, Trucks Entering and related on 5th, North and Third Streets
Submit Traffic Control Plan to City for approval prior to begin work.



- Parking:**
 - 60 Spaces Required
 - 60 Spaces Provided incl. handicap
- Landscaping:**
 - 30,000 points required
 - 25% in ROW (7,500 pts.)
 - Supply materials compatible with local growing conditions. Plant in accordance with supplier's recommendations.
- Grading:**
 - 9,200 CY Embankment includes 15% shrinkage
 - 2,700 CY on site excavation
 - 6,500 CY import borrow.

SEE Structural Plans for wall & stair details.
Keep structural components out of public right of way.

REDISE, COMPACT EXISTING OR PLACE NEW 6" COMPACTED GRAVEL IN VACATED ALLEY. 20 FT. WIDE, MAINTAIN EXISTING GRADE.

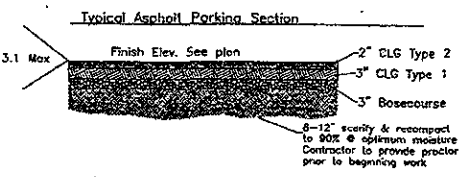
NOTES:
SPECIFICATIONS TO BE USED, CITY OF RAPID CITY STANDARD SPECIFICATIONS AND DETAILS FOR UTILITIES & PUBLIC WORKS CONSTRUCTION.
COORDINATE WITH CITY AND PRIVATE UTILITIES PRIOR TO BEGIN WORK.
OBTAIN FUGITIVE DUST CONTROL PERMIT.
PLACE AND MAINTAIN SILT FENCE, STRAW BALES OR SIMILAR EROSION CONTROL AND SEDIMENT TRAP DEVICES. REFERENCE CITY STANDARD DETAILS 146 1A TO 1C. SEE LOCATION ON PLANS, ADJUST AS NEEDED OR ADD ADDITIONAL TO CONTROL SEDIMENT OR AS DIRECTED BY CITY.
PREVENT SEDIMENT FROM LEAVING CONSTRUCTION SITE. REPAIR EROSION AS NEEDED.

PROMOTE & MAINTAIN 50 FT. L X 24 FT. W X 3" CLEAN ROCK TRANSITION BETWEEN EXISTING PAVEMENT AND WORK AREA ACCESS POINTS UNTIL FINAL PAVING COMPLETE. 3RD ST AND NORTH ST ENTRANCES.
SEED, FERTILIZE AND MULCH DISTURBED AREAS IMMEDIATELY UPON COMPLETION OF WORK. USE CITY "ROAD DITCH MIX" SEED MIX, EXCEPT WHERE LANDSCAPE TURF PLACED.

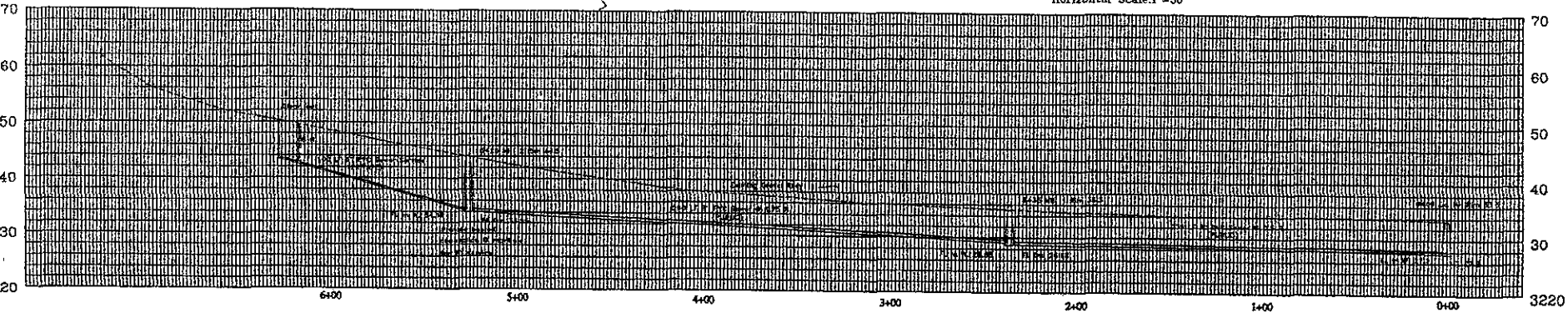
REVIEWED BY CITY ENGINEERING DIVISION

Project No.	8-2003
Design	
Drawn	
Checked	
Comments	DEV 03-594

Contractors shall be responsible for obtaining all necessary permits from the City Engineering Division before starting any of the proposed public improvements



PROFILE
Vertical Scale: 1"=10'
Horizontal Scale: 1"=30'



Topo Survey and 2 ft. contours from Hanson Surveying 2 ft. contours deleted from inside work area for clarity

X = light pole location