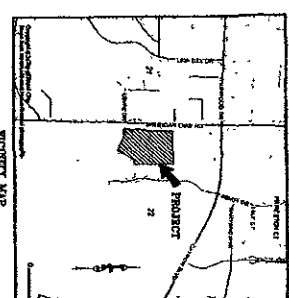
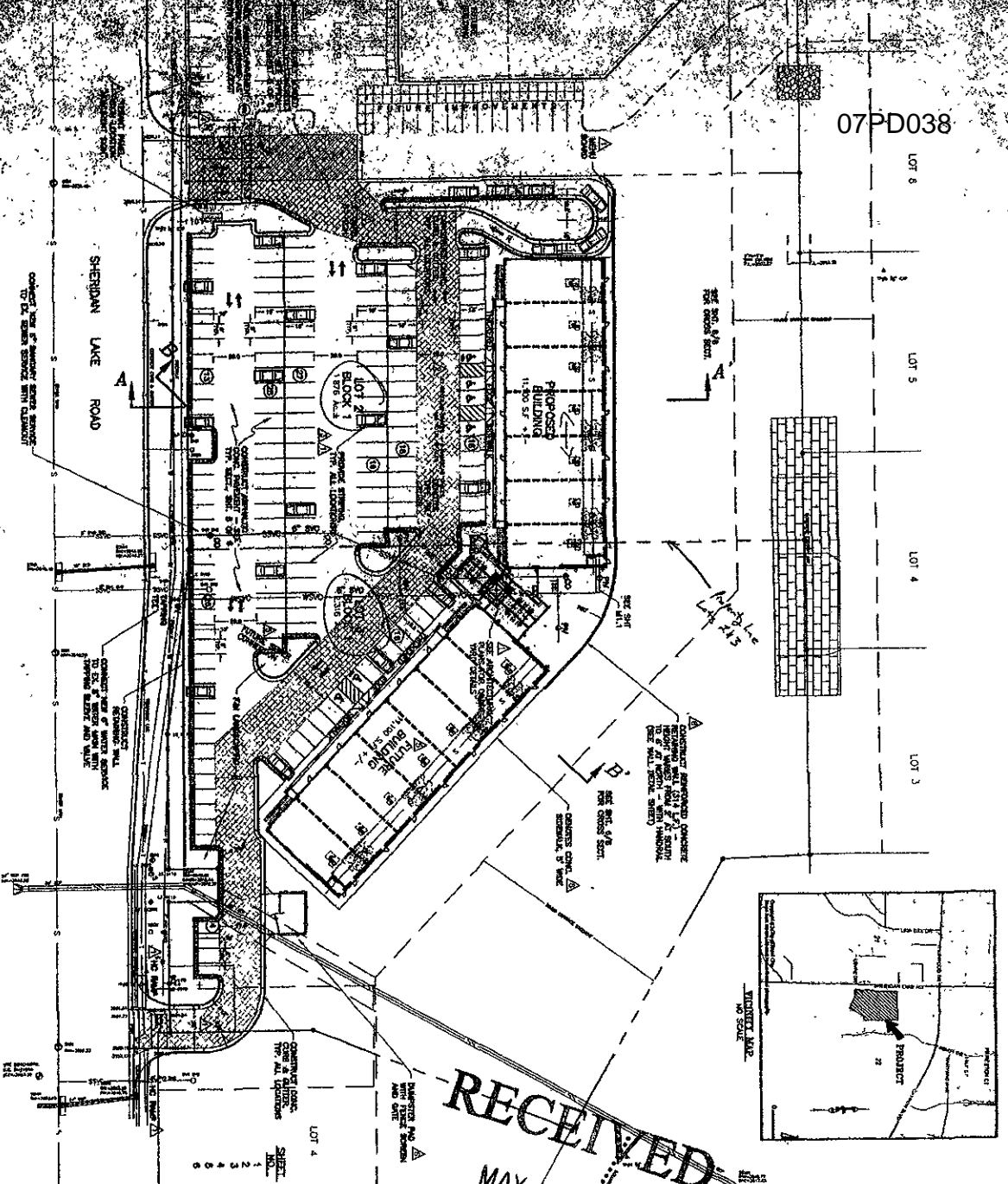


07PD038

LOT 6  
LOT 5  
LOT 4  
LOT 3



**RECEIVED**  
MAY 11 2007

Rapid City Growth  
Management Department

INDEX OF SHEETS

SHEET NO.	TITLE
1	SITE IMPROVEMENTS
2	GRADING PLAN & EROSION CONTROL PLAN
3	GRADING PLAN
4	STANDARD DETAILS
5	CROSS SECTIONS

**SITE IMPROVEMENTS**  
STONEY CREEK SOUTH SUBDIVISION

**LEGAL DESCRIPTION**  
LOTS 3 & 4 OF BLOCK 1  
STONEY CREEK SOUTH SUBDIVISION  
LOCATED IN THE CITY OF RAPID CITY  
AND THE 2ND 1/4 OF THE 2ND  
SECTION 22 T14N R10W S14E  
RAPID CITY, SOUTH DAKOTA  
SIGNED BY: [Signature]

**REVISIONS**

NO.	DATE	DESCRIPTION
1	05/11/07	ISSUED FOR PERMITS



**SPERLICH Consulting, Inc.**  
221 1/2 Columbus St., Rapid City, SD 57701  
TEL: (605) 721-4040 FAX: (605) 721-4041  
E-MAIL: jbs@sperrlich.com

SHEET 4 OF 5