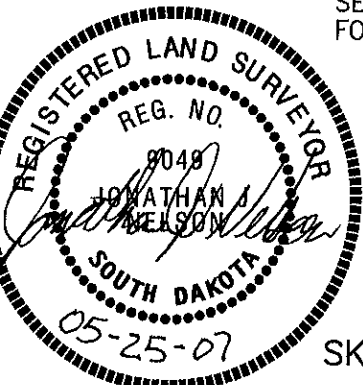
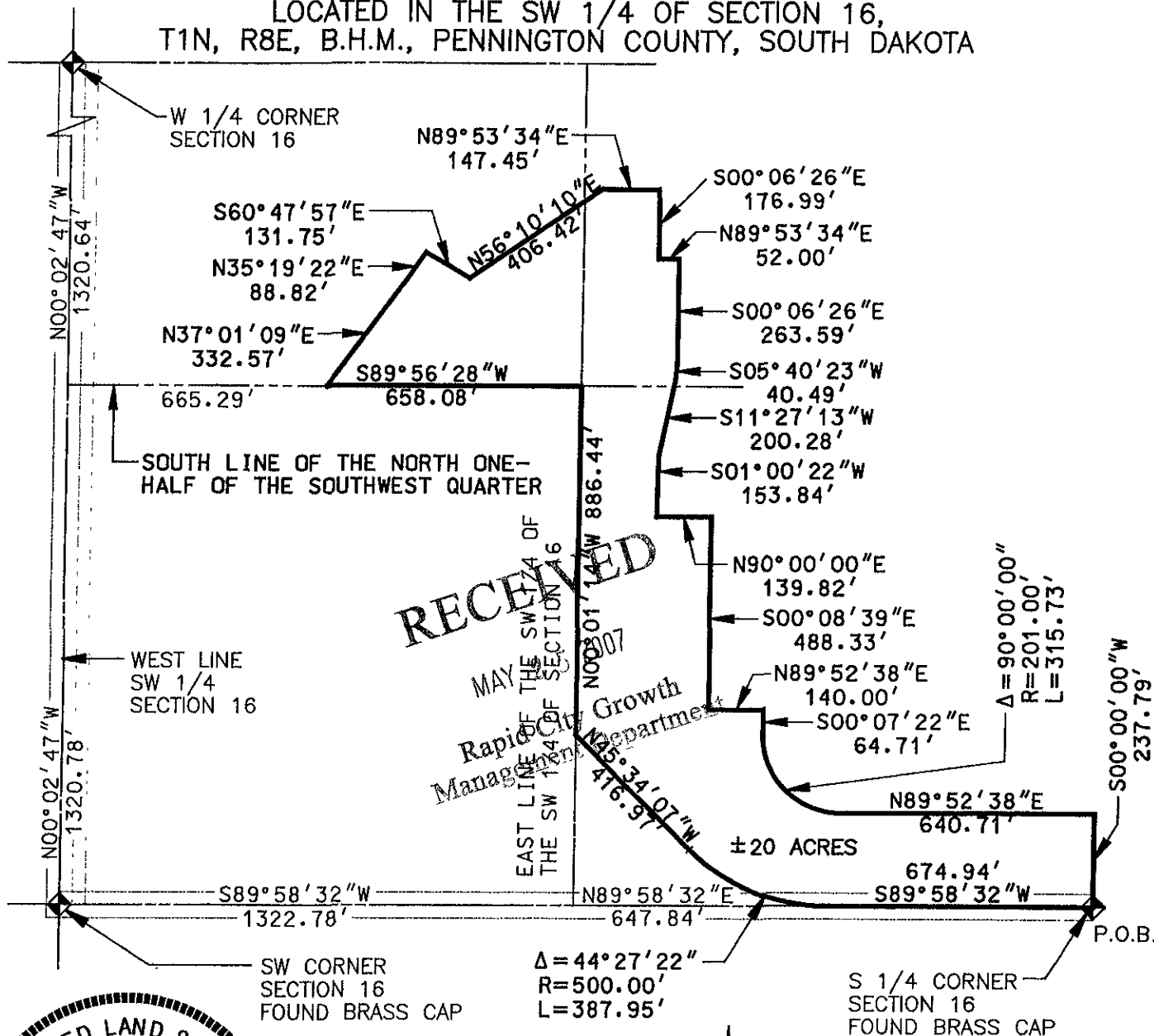


# PLUM CREEK DEVELOPMENT

## PARCEL J (MEDIUM DENSITY RESIDENTIAL)

LOCATED IN THE SW 1/4 OF SECTION 16,  
T1N, R8E, B.H.M., PENNINGTON COUNTY, SOUTH DAKOTA



SCALE: 1" = 400'

SKETCH FOR ZONING DESCRIPTION