

RECEIVED
MAY 25 2007
Rapid City Growth
Management Department

ELK COUNTRY
ESTATES

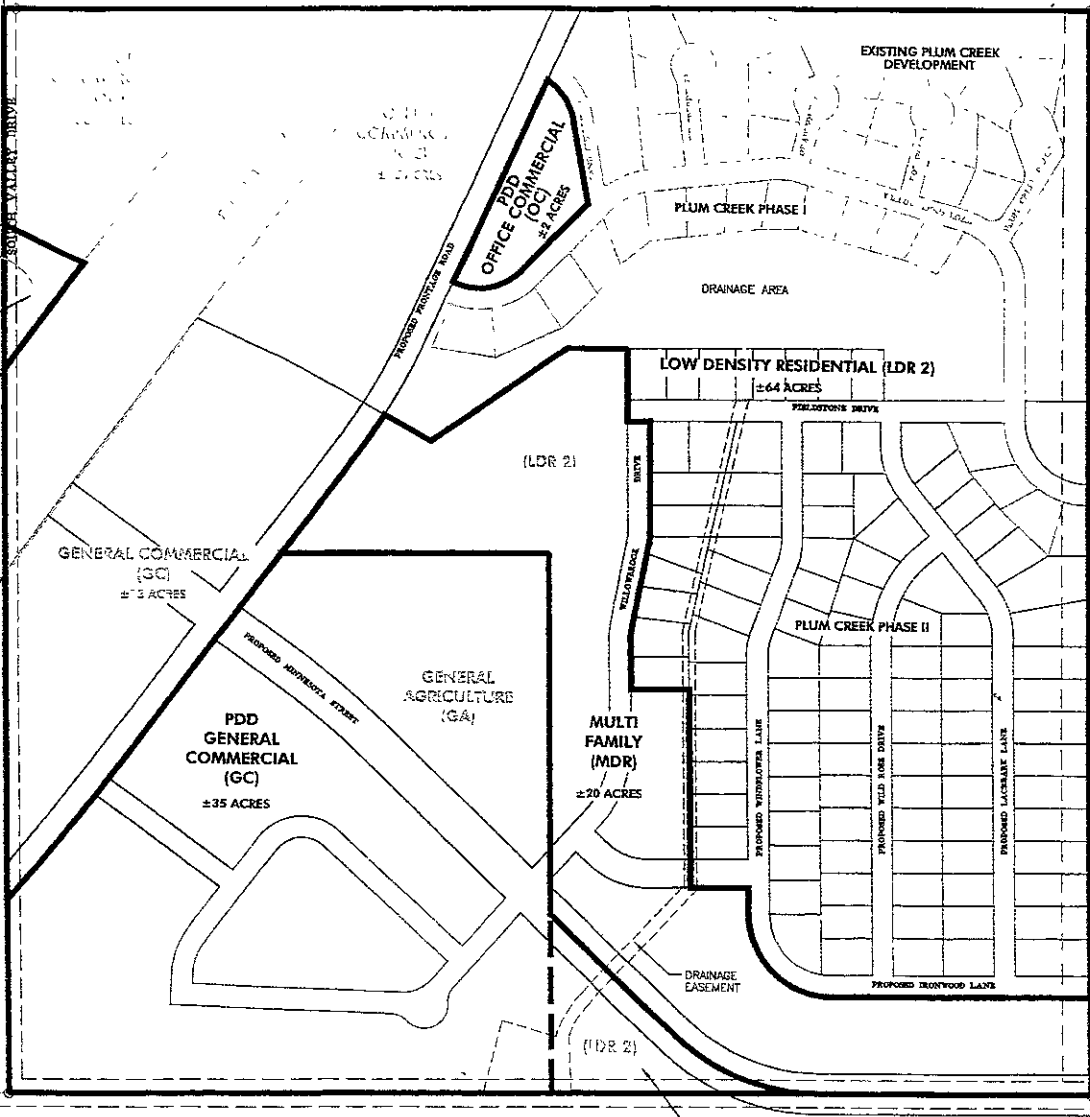
ARCHITECTURE AND ENGINEERING SURVEYING
TOWN AND COUNTRY
PLANNING AND DESIGN
1740 W. 13TH ST. SUITE 100
RAPID CITY, SD 57701
TEL: (605) 342-1211
WWW.TOWNANDCOUNTRY.COM



PLUM CREEK
DEVELOPMENT
Rapid City, South Dakota

REVISIONS

SHEET TITLE:
PROPOSED
LAND USE
WITH
PRELIMINARY
LOT LAYOUT
SHEET



GENERAL
COMMERCIAL
(GC)
OFFICE
COMMERCIAL
(OC)
±1 ACRES

GENERAL COMMERCIAL
(GC)
±3 ACRES

PDD
GENERAL
COMMERCIAL
(GC)
±35 ACRES

GENERAL
AGRICULTURE
(GA)

MULTI
FAMILY
(MDR)
±20 ACRES

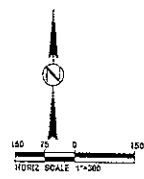
LOW DENSITY RESIDENTIAL (LDR 2)
±64 ACRES

PDD
OFFICE
COMMERCIAL
(OC)
±2 ACRES

PDD
GENERAL
COMMERCIAL
(GC)
±2 ACRES

NOTE:
THE ACREAGE'S OF THE VARIOUS ZONING
AREAS INCLUDE MINNESOTA STREET.

LEGEND
— PROPOSED ZONING
--- EXISTING ZONING



SOUTH 1/4 CORNER
SECTION 16 FOUND
BRASS MONUMENT

SOUTHWEST CORNER
SECTION 16 FOUND
BRASS MONUMENT

PRELIMINARY
NOT FOR CONSTRUCTION