

PLUM CREEK DEVELOPMENT

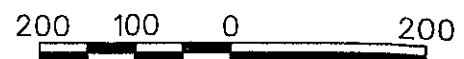
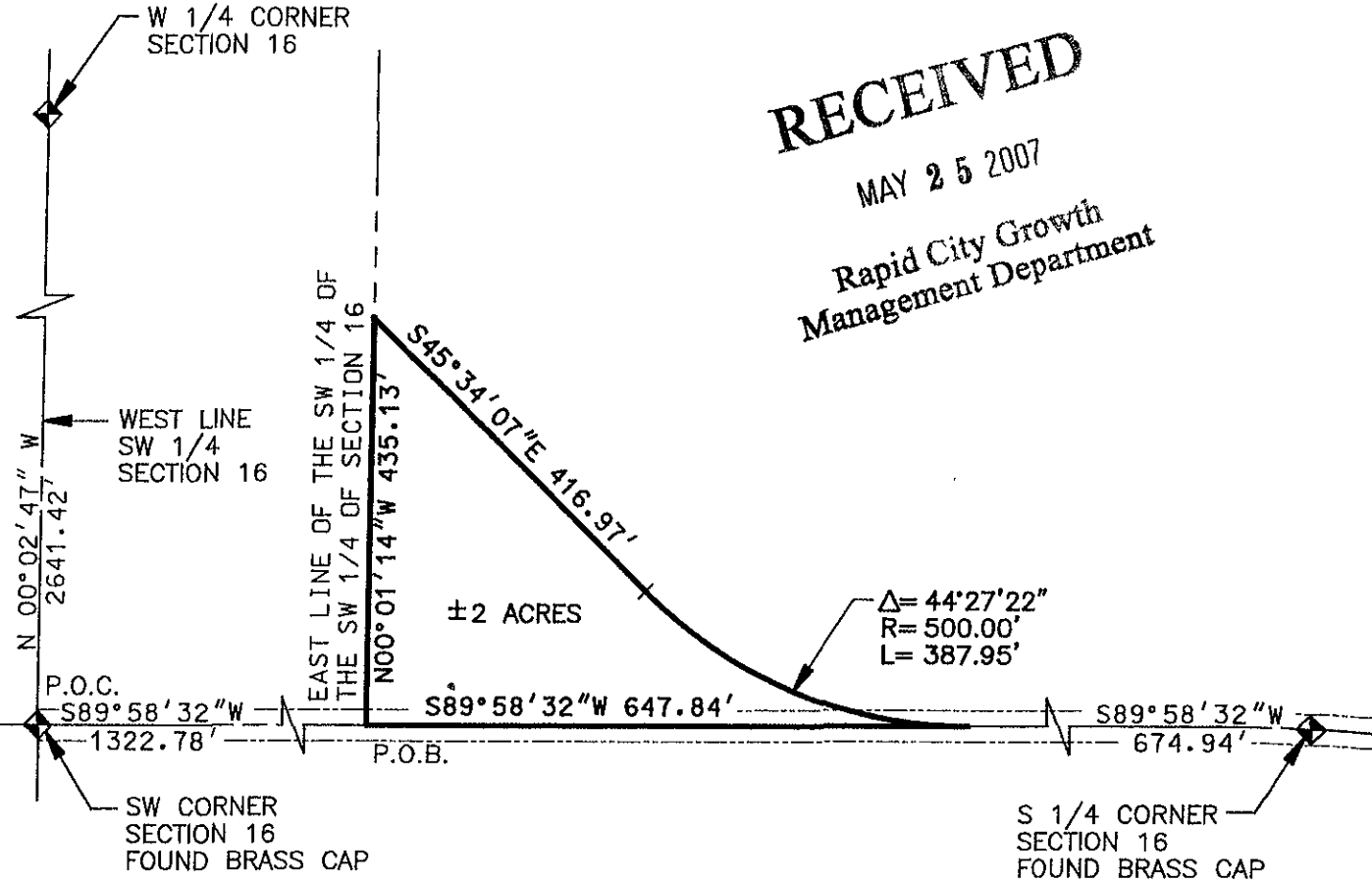
PARCEL I (GENERAL COMMERCIAL)

LOCATED IN THE SW 1/4 OF SECTION 16,
T1N, R8E, B.H.M., PENNINGTON COUNTY, SOUTH DAKOTA

RECEIVED

MAY 25 2007

Rapid City Growth
Management Department



SCALE: 1" = 200'

SKETCH FOR ZONING DESCRIPTION



PLUM CREEK DEVELOPMENT

SHEET TITLE:
PARCEL I

SHEET
2 OF 2