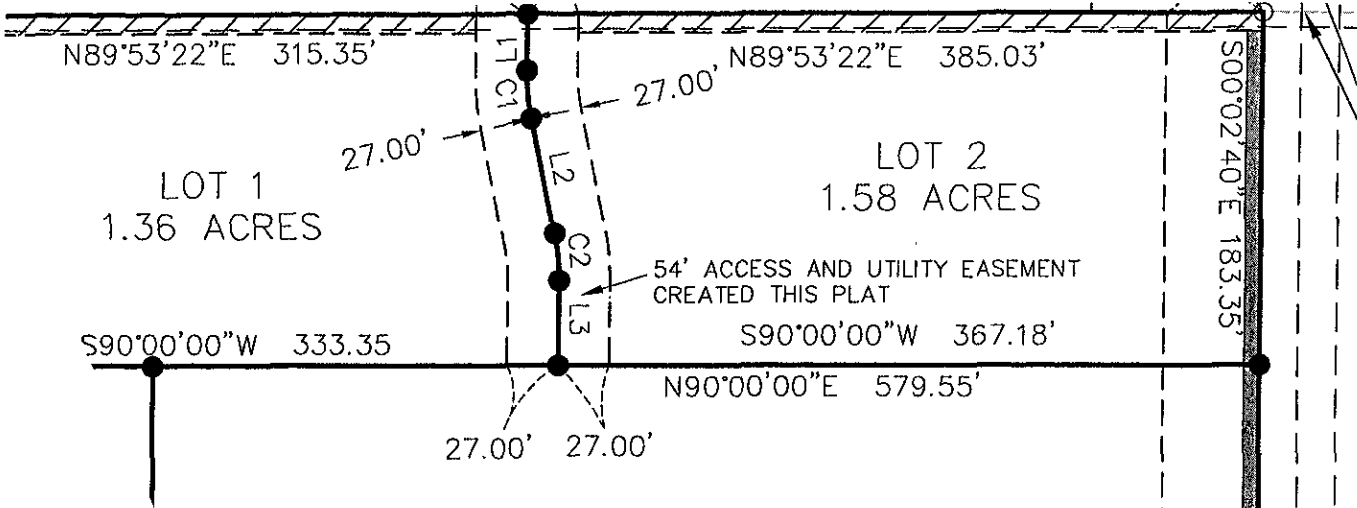


07SV029

EXHIBIT A  
WAIVE 8' UTILITY EASEMENT  
LOCATED IN THE N $\frac{1}{2}$ SW $\frac{1}{4}$  OF THE  
SECTION 28, T2N, R8E  
RAPID CITY, SOUTH DAKOTA  
MAY 11, 2007



PRELIMINARY

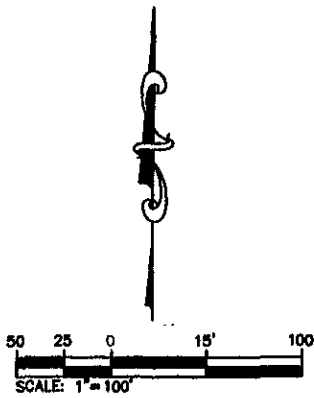
LOT 3  
9.86 ACRES

RECEIVED

MAY 11 2007

Rapid City Growth  
Management Department

8' UTILITY EASEMENT NOT  
ESTABLISHED THIS PLAT,  
DUE TO DRAINAGE EASEMENT



DREAM DESIGN INTERNATIONAL, INC.

CIVIL ENGINEERING • LANDSCAPE ARCHITECTURE  
LAND DEVELOPMENT • CONSTRUCTION ADMINISTRATION

