



# DREAM DESIGN INTERNATIONAL, INC.

CIVIL ENGINEERING • LANDSCAPE ARCHITECTURE  
LAND DEVELOPMENT • CONSTRUCTION ADMINISTRATION

May 1, 2007

Vicki Fisher, Planner  
City/School Administration Complex  
300 Sixth Street  
Rapid City, South Dakota

Vicki:

Please add this additional sign information to the Final PCD Sign Package that was submitted for review on April 27<sup>th</sup> 2007. The attached information is requesting to use the existing Berry Patch Campground Sign as temporary signage advertising the Rushmore Crossing Development. Currently, the sign serves east bound traffic, a second side will be added to serve all west bound traffic – Creating a “V” form.

The attached artwork depicts the progression of the billboard on the property. The first panel will be displayed in May 2007. The subsequent panels show how the board will develop over a 10 month period to reveal the final board.

**Sign Information:**

- The anticipated schedule for the sign removal is: Fall 2008, this is a temporary sign and will be removed when the shopping center opens.
- Construction of the proposed project monument signs is slated to begin in Spring/Summer of 2008.
- The existing/proposed sign size is 8'x32'.
- Number of Proposed Sides: 1 Existing, 1 New

**Proposed materials:**

- Wood poles,
- 2"x4" stringers
- MDO 1/2" wood panels
- Vinyl 13oz. flex face

Please see the attached images for the sign location, elevation, and advertisement to be placed on the sign.

Thanks for your help on this and let me know if you have any questions regarding this information new information.

Sincerely,

DREAM DESIGN INTERNATIONAL, INC.

Michael Stanley, ASLA

Cc: Michael Small, Midland Atlantic  
Eric Farrar, Rosenbaum Signs  
Cheryl Janklow, Robert Sharp & Associates

Enclosures

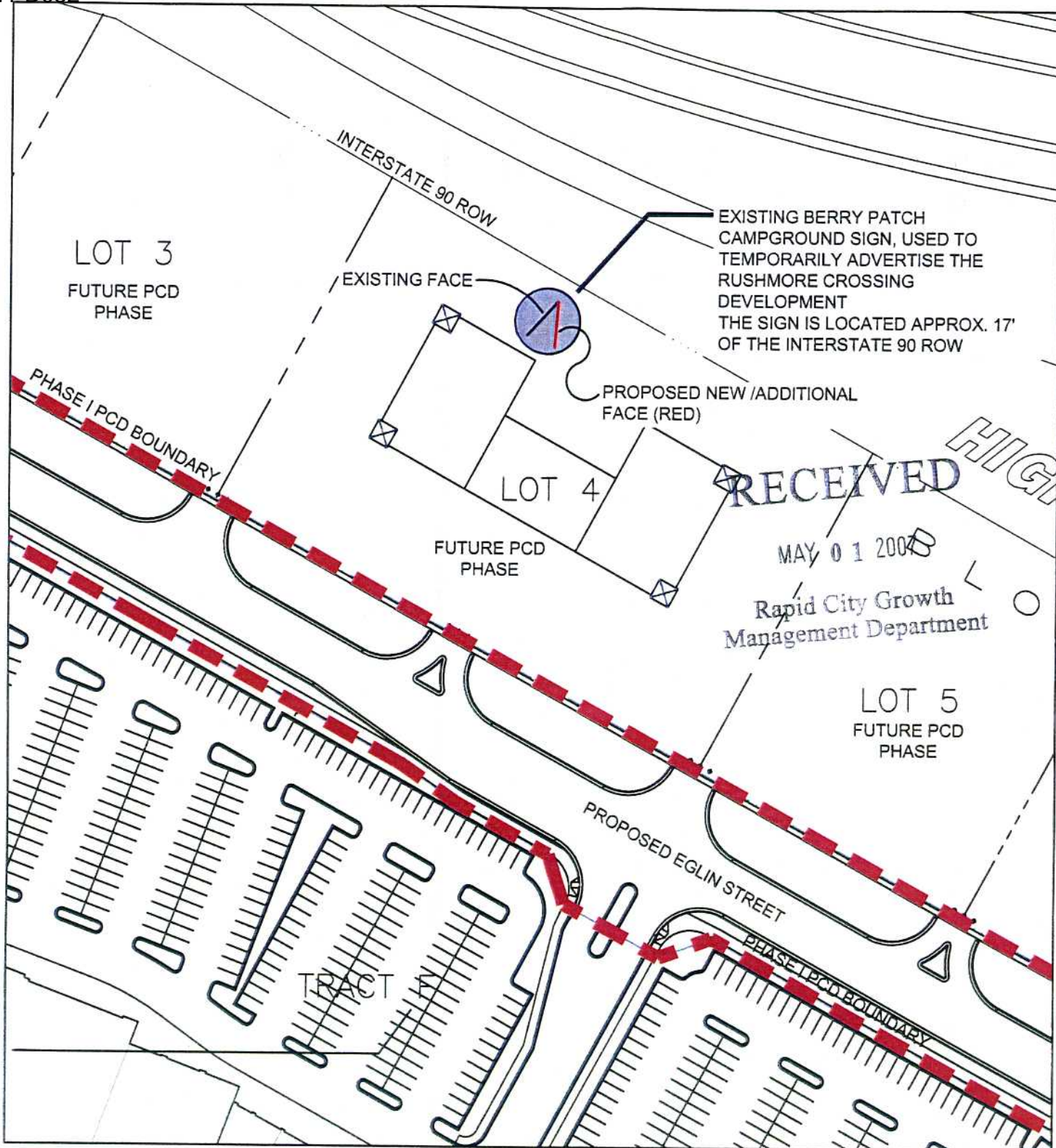
RECEIVED

MAY 01 2007

Rapid City Growth  
Management Department

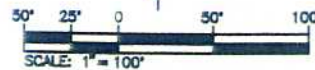
528 Kansas City Street, Suite 4. Rapid City, SD 57701

Telephone: (605) 348-0538, Fax: (605) 348-0545, Email: engineers@dreamdesigninc.com



FOR REVIEW  
ONLY

EXHIBIT  
EXISTING BERRY PATCH SIGN  
FOR TEMPORARY SIGNAGE  
FINAL PCD SUBMITTAL, PHASE 1  
LOCATED IN  
RUSHMORE CROSSING  
RAPID CITY, SOUTH DAKOTA  
MAY 1, 2007

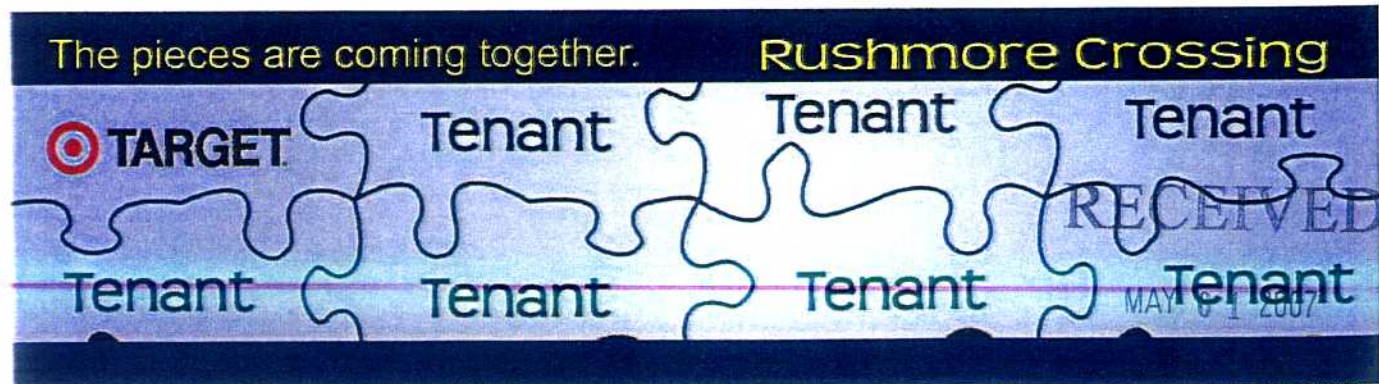
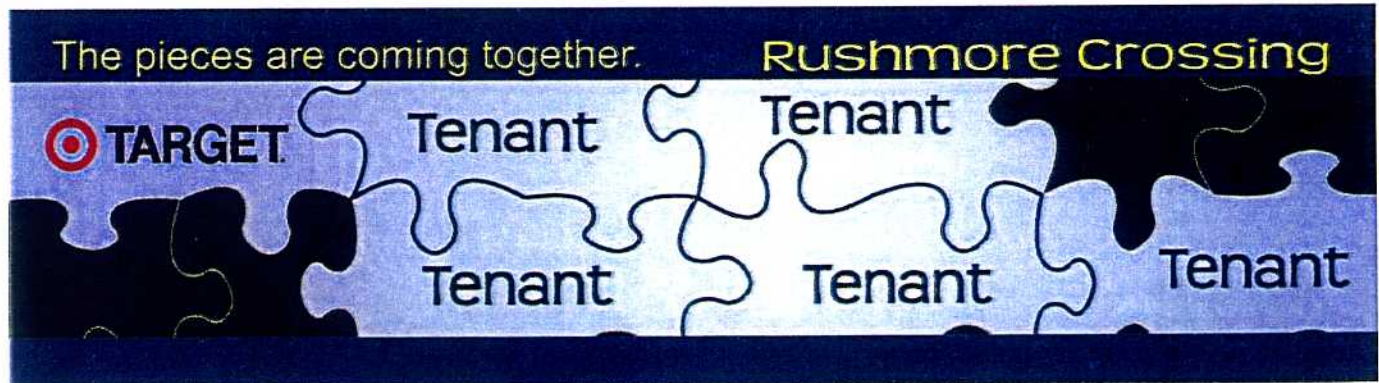
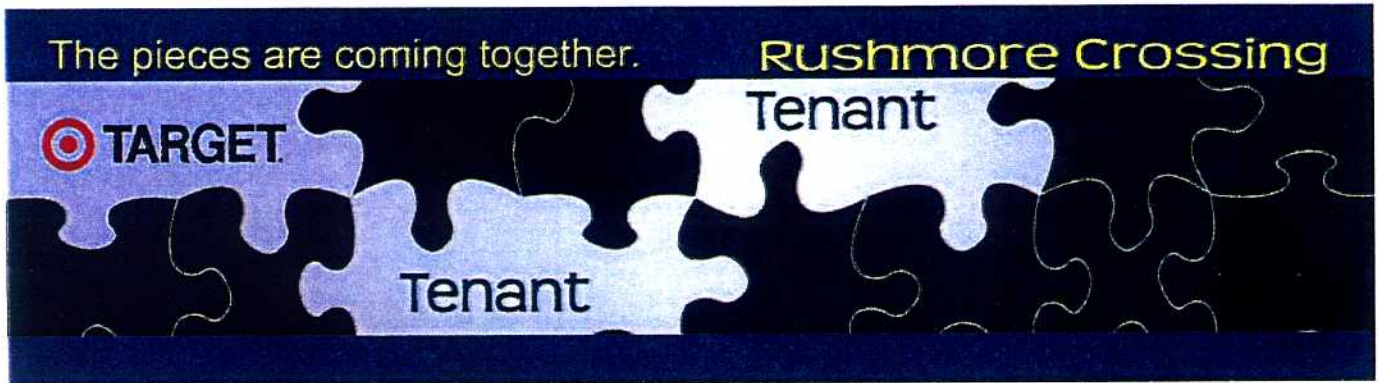
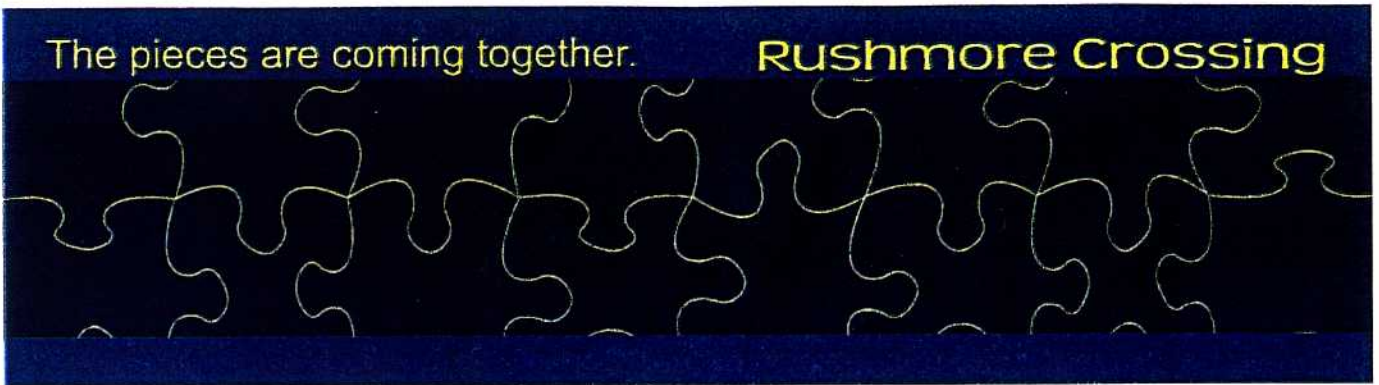


DREAM DESIGN INTERNATIONAL, INC.

CIVIL ENGINEERING - LANDSCAPE ARCHITECTURE  
LAND DEVELOPMENT - CONSTRUCTION ADMINISTRATION

### RUSHMORE CROSSING BILLBOARD

The following creative artwork depicts the progression of the billboard on the property. The first panel will be displayed in May 2007. The subsequent panels show how the board will develop over a 10 month period to reveal the final board.



RECEIVED

MAY 01 2007

Rapid City Growth  
Management Department

BERRY PATCH EXISTING SIGNAGE,  
TEMPORARY SIGNAGE FOR RUSHMORE CROSSING  
SIGN SIZE: 8'X32'

