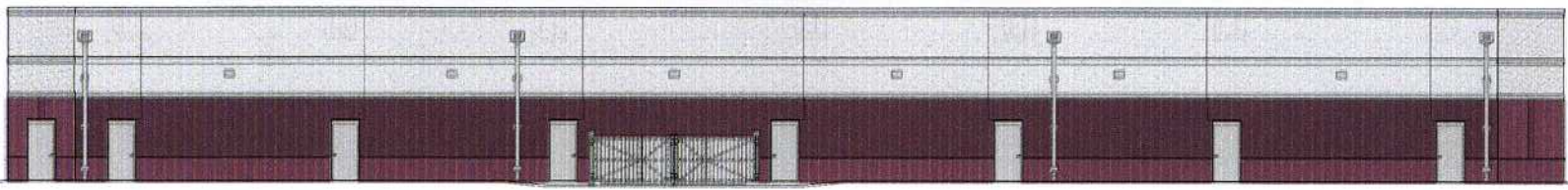
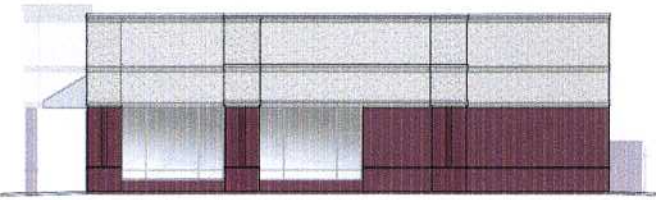


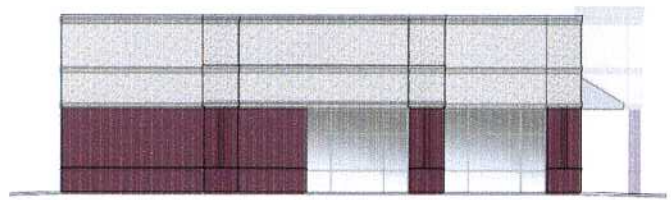
FRONT (WEST) WALL ELEVATION - AT FRONT CANOPY
SCALE 1/8" = 1'-0"



REAR WALL (EAST) ELEVATION
SCALE 1/8" = 1'-0"



SOUTH SIDE WALL ELEVATION
SCALE 1/8" = 1'-0"



NORTH SIDE WALL ELEVATION
SCALE 1/8" = 1'-0"

RECEIVED
MAY 11 2007

Rapid City Growth
Management

