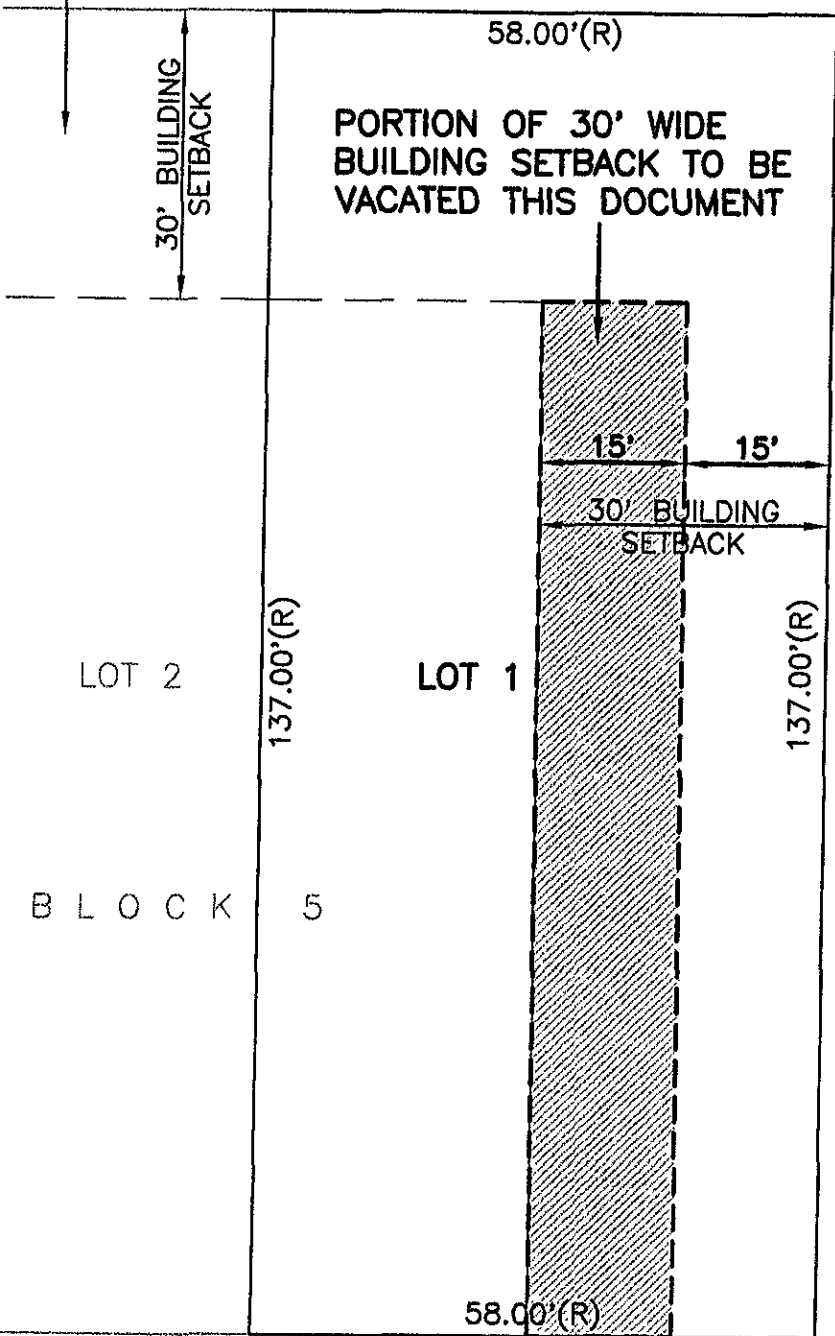


# VACATION OF A PORTION OF THE BUILDING SETBACK LOT 1 OF BLOCK 5 OF RAPID VALLEY SUBDIVISION

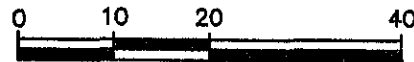
LOCATED IN THE NE<sup>1</sup>/<sub>4</sub> OF THE NE<sup>1</sup>/<sub>4</sub>,  
SECTION 8, T1N, R8E, BHM,  
RAPID CITY, PENNINGTON COUNTY, SOUTH DAKOTA

EAST ST. FRANCIS STREET  
40' WIDE R.O.W. OF RECORD

30' WIDE BUILDING SETBACK  
AS SHOWN IN PLAT BOOK  
4 PAGE 155



APRIL 12, 2007



SCALE: 1" = 20'

