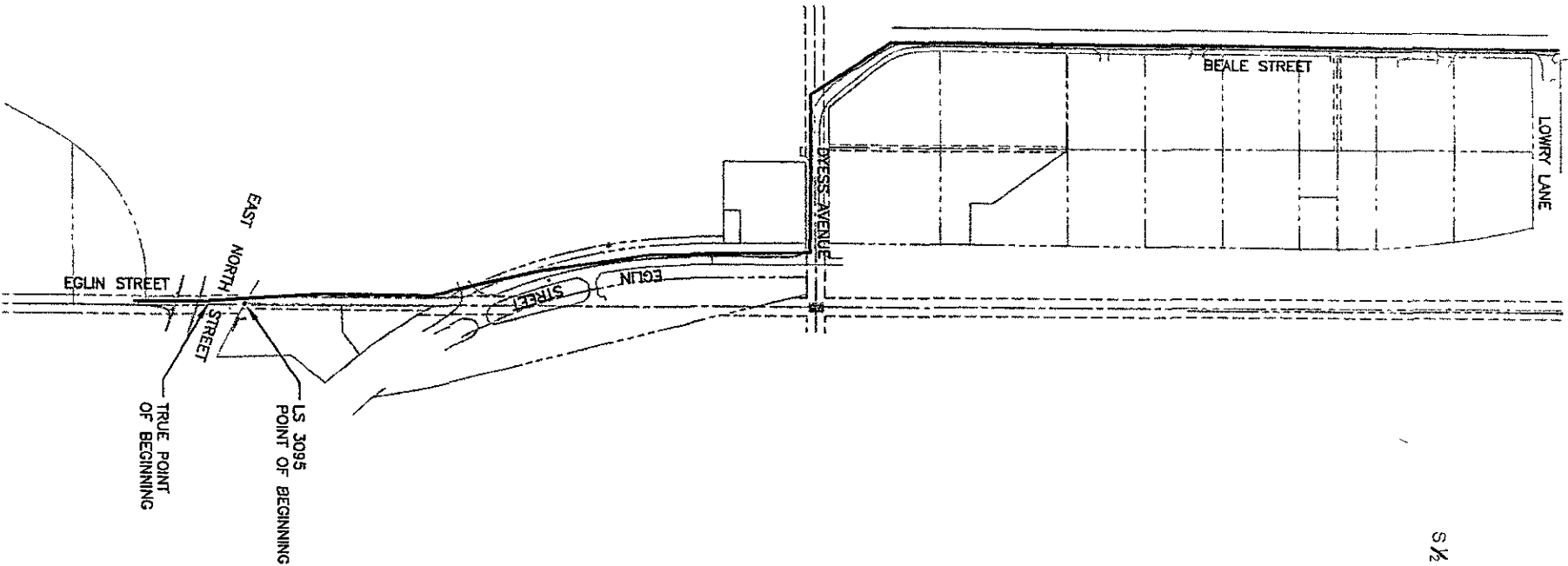


EXHIBIT A
 12" WATER MAIN AND 15" SANITARY SEWER MAIN
 LOCATED IN
 S ½ SEC. 29, & S ½ SW¼, SEC. 28, ALL IN T2N, R8E, BHM
 RAPID CITY, PENNINGTON COUNTY, SOUTH DAKOTA

INTERSTATE 90



LEGAL DESCRIPTION

Beginning at the intersection of East North Street and Eglin Street, approximately 166' east of said intersection at a found property corner "LS 3095", this being the point of beginning; thence 125.72' a direction of N 85°59'37" W to an existing sanitary sewer manhole being the true point of beginning; thence 400.00' a direction of N 86°14'35" E; thence 400.00' a direction of S 89°52'31" E; thence 400.00' a direction of N 77°01'56" E; thence 399.39' a direction of N 81°08'38" E; thence 294.33' a direction of N 88°54'12" E; thence 274.89' a direction of N 88°54'12" E; thence 297.10' a direction of N 00°24'55" E; thence 279.86' a direction of N 00°24'55" E; thence 345.05' a direction of N 56°20'09" E; thence 430.13' a direction of S 89°44'06" E; thence 400.00' a direction of S 89°44'06" E; thence 400.00' a direction of S 89°44'06" E; thence 400.00' a direction of S 89°44'06" E; thence 400.00' a direction of S 89°44'06" E; thence 300.88' a direction of S 89°54'03" E to an existing sanitary sewer manhole, this being the end of said baseline, all containing approximately 4.68 acres.

RECEIVED

APR 17 2007

Rapid City Growth
 Management Department



07SR028

DREAM DESIGN INTERNATIONAL, INC.

CIVIL ENGINEERING - LANDSCAPE ARCHITECTURE
 LAND DEVELOPMENT - CONSTRUCTION ADMINISTRATION

