

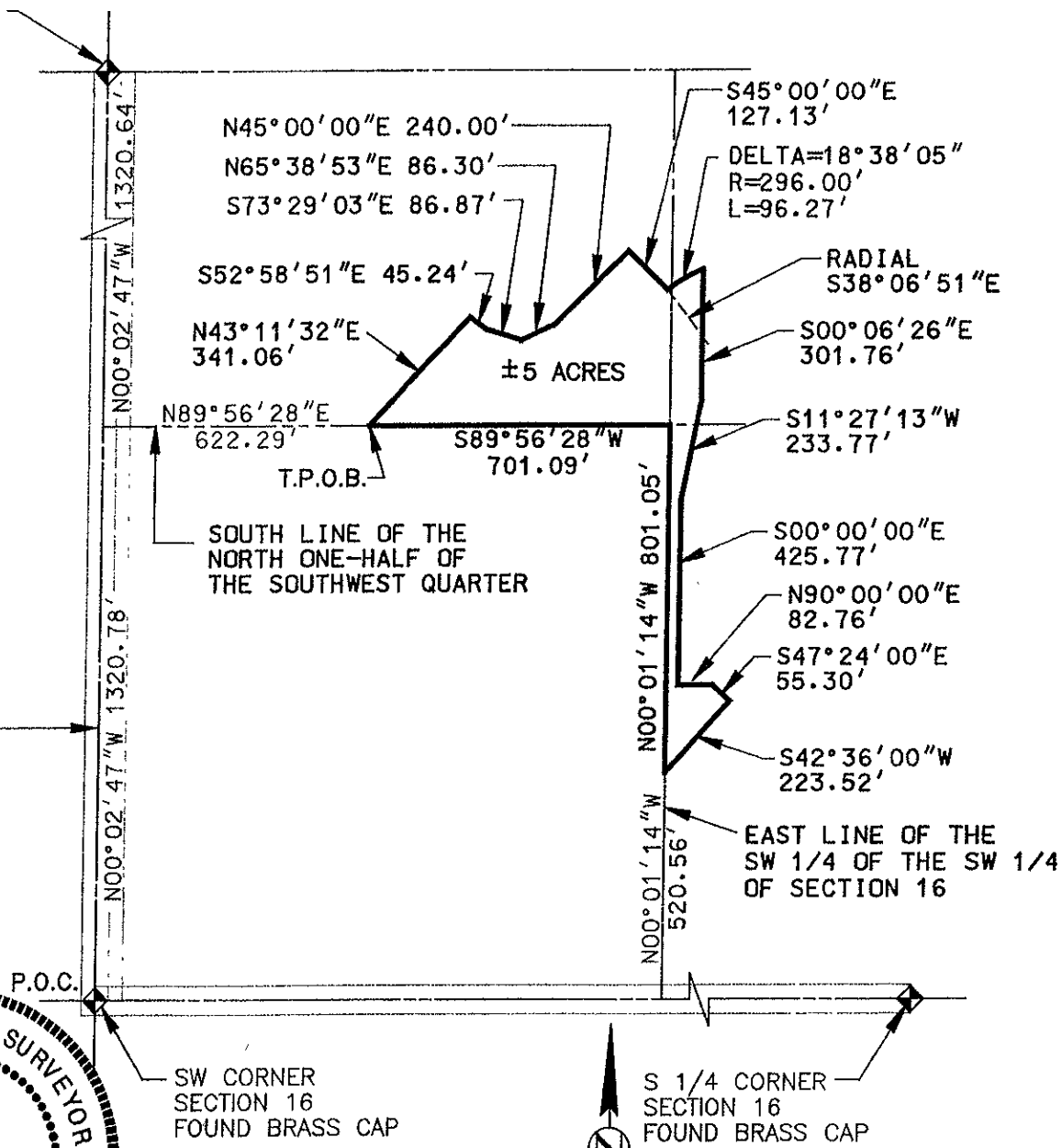
PLUM CREEK DEVELOPMENT

PARCEL G (GENERAL COMMERCIAL)

LOCATED IN THE SW 1/4 OF SECTION 16,
T11N, R8E, B.H.M., PENNINGTON COUNTY, SOUTH DAKOTA

W 1/4 CORNER
SECTION 16

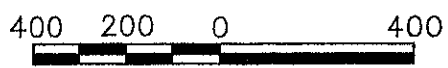
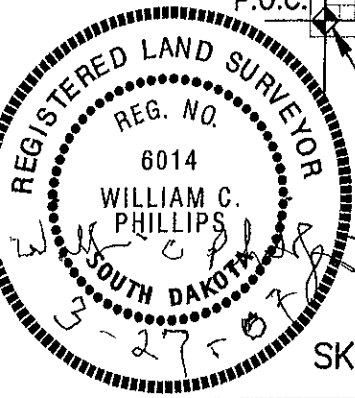
WEST LINE
SW 1/4
SECTION 16



P.O.C.

SW CORNER
SECTION 16
FOUND BRASS CAP

S 1/4 CORNER
SECTION 16
FOUND BRASS CAP



SCALE: 1" = 400'

SKETCH FOR ZONING DESCRIPTION