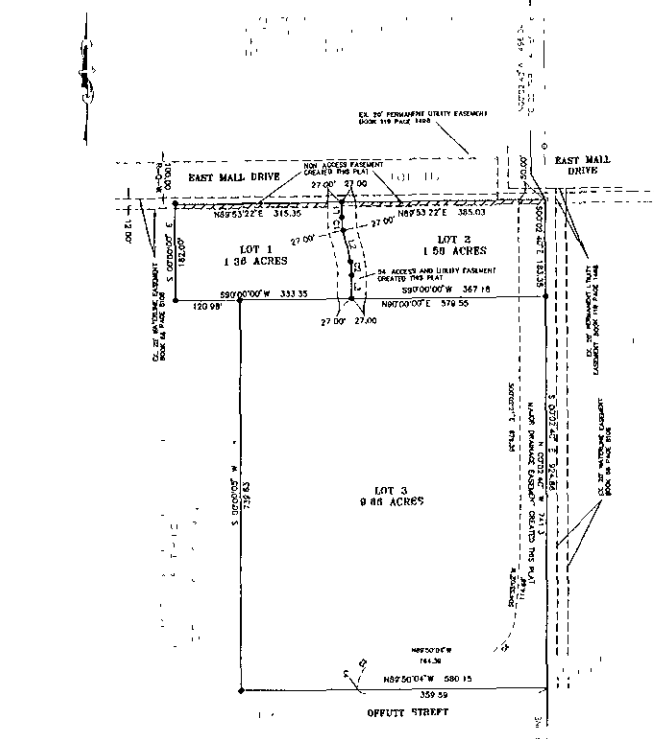


FLAT OF FOREFATHER FLATS SUBDIVISION, LOTS 1, 2 AND 3 FORMERLY THE UNPLATTED PORTION OF THE NORTH HALF OF THE SOUTH 1/4 SECTION 28 ALL LOCATED IN THE SOUTHWEST QUARTER OF SECTION 28 IN TOWNSHIP 2 NORTH OF RANGE 8 EAST OF THE BLACK HILLS MTR'IAN, IN THE CITY OF RAPID CITY, PENNINGTON COUNTY, SOUTH DAKOTA



LINE	BEARING	DISTANCE
1	S 02°00'00" E	28.38
2	S 02°00'00" E	80.42
3	S 02°00'00" E	141.8
4	S 89°00'00" E	1.78

LINE	BEARING	DISTANCE	AREA (SQ. FT.)	AREA (ACRES)
1	S 02°00'00" E	28.38	24.56	0.00056
2	S 02°00'00" E	80.42	64.34	0.00148
3	S 02°00'00" E	141.8	113.58	0.00261
4	S 89°00'00" E	1.78	0.00004	0.00000

- NOTES:**
- MINOR DRAINAGE AND UTILITY EASEMENTS ARE HEREBY ESTABLISHED TO WIDE ON THE INTERIOR SIDE OF ALL LOT CORNERS AND FRONT-OF-WAY (EXCEPT WHERE MAJOR DRAINAGE EASEMENTS ARE LOCATED)
 - TOTAL PLATTED AREA, 12.84 ACRES
 - NON-ACCESS EASEMENTS ARE HEREBY ESTABLISHED ALONG THE CORNER LOTS AND AS INDICATED HEREON
 - ALL BUILDERS SHALL MAINTAIN EXISTING DRAINAGE FACILITIES IN ACCORDANCE TO APPROVED CONSTRUCTION PLANS.
 - ACREAGE SHOWN ON LOTS INCLUDES EASEMENTS.
 - EXISTING TEMPORARY EASEMENTS ARE NOT SHOWN HEREON
 - BASES OF BEARING FOR THIS PLAT IS GEODESIC NORTH
 - LOT 112 RECORDED IN HIGHWAY PLAT BOOK 11 PAGE 8
 - LOT 143 RECORDED IN PLAT BOOK 2 PAGE 264

- LEGEND**
- Denotes set 5/8" rebar with survey cap marked AREA 1112
 - () Denotes found Survey Monument w/cap as noted
 - ▭ Denotes Non-Access Easement 1 per this Plat

REVISION -
REVISION -
REVISION -