

EXHIBIT "A" AREA OF ANNEXATION

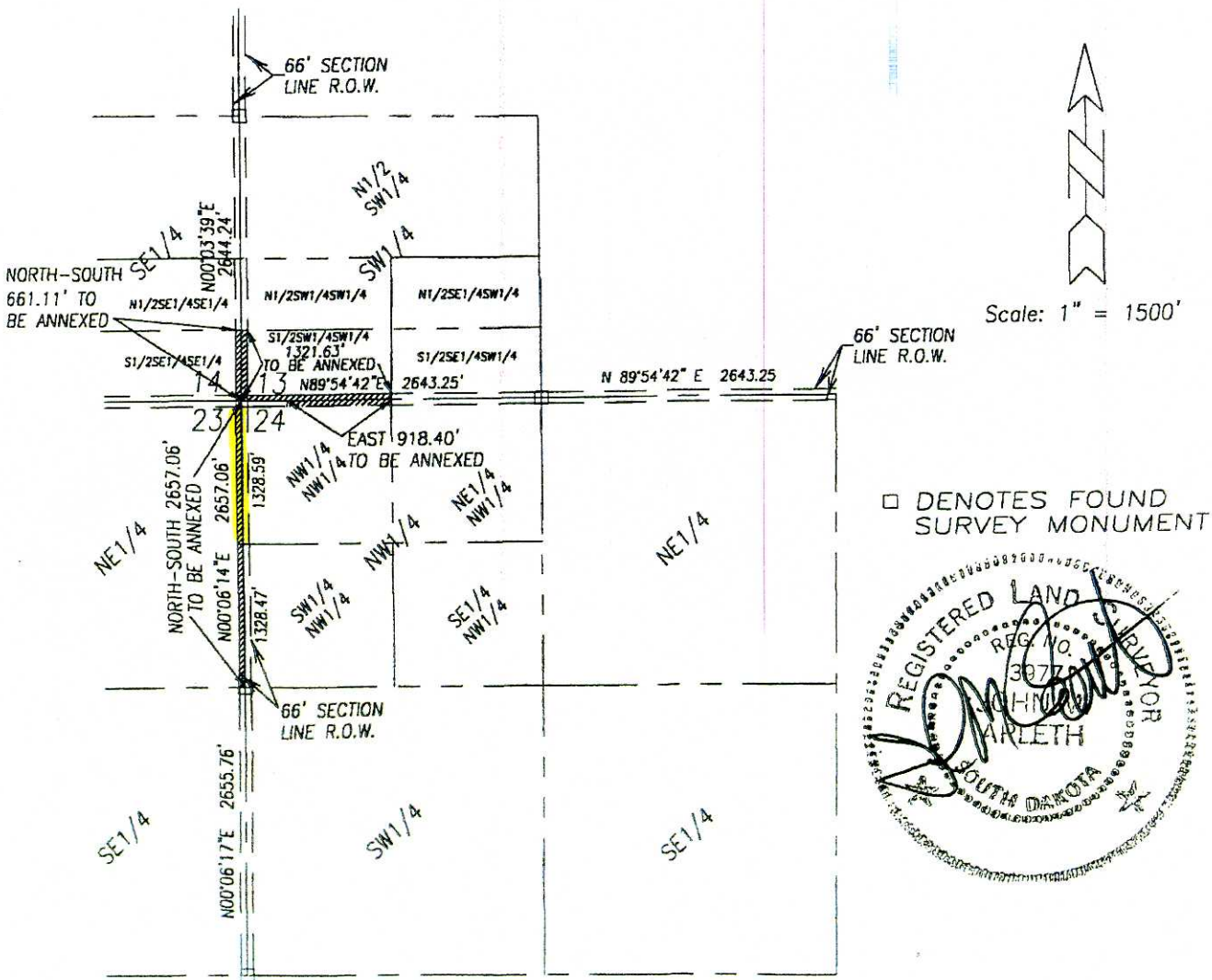
LOCATED IN SECTIONS 13, 14, 23 & 24, T2N, R7E, BHM
07CA019 PENNINGTON COUNTY, SOUTH DAKOTA

THE NORTH-SOUTH SECTION LINE RIGHT-OF-WAY LOCATED IN THE S1/2SE1/4SE1/4 OF SECTION 14, T2N, R7E, BHM

ALL OF THE SECTION LINE RIGHT-OF-WAY LOCATED IN THE S1/2SW1/4SW1/4 OF SECTION 13, T2N, R7E, BHM

THE EAST 918.40 FEET OF THE EAST-WEST SECTION LINE RIGHT-OF-WAY LOCATED IN THE NW1/4NW1/4 OF SECTION 24, T2N, R7E, BHM

THE NORTH-SOUTH SECTION LINE RIGHT-OF-WAY LOCATED IN THE NE1/4 OF SECTION 23, T2N, R7E, BHM



BASIS OF BEARINGS: GEODETIC NORTH