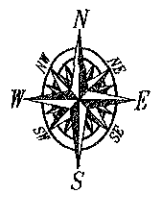


Plat of Lots 9A and 9B of Lot 9, 07PL056
 and Lots 10A and 10B of Lot 10,
 all in Block 10 of Fairway Hills P.R.D.,
 (formerly all of Lots 9 and 10 of Block 10 of Fairway Hills P.R.D.)
 Located in the SW1/4 of Section 15, T1N, R7E, BHM,
 Rapid City, Pennington County, South Dakota



1" = 40'
 March 30, 2007

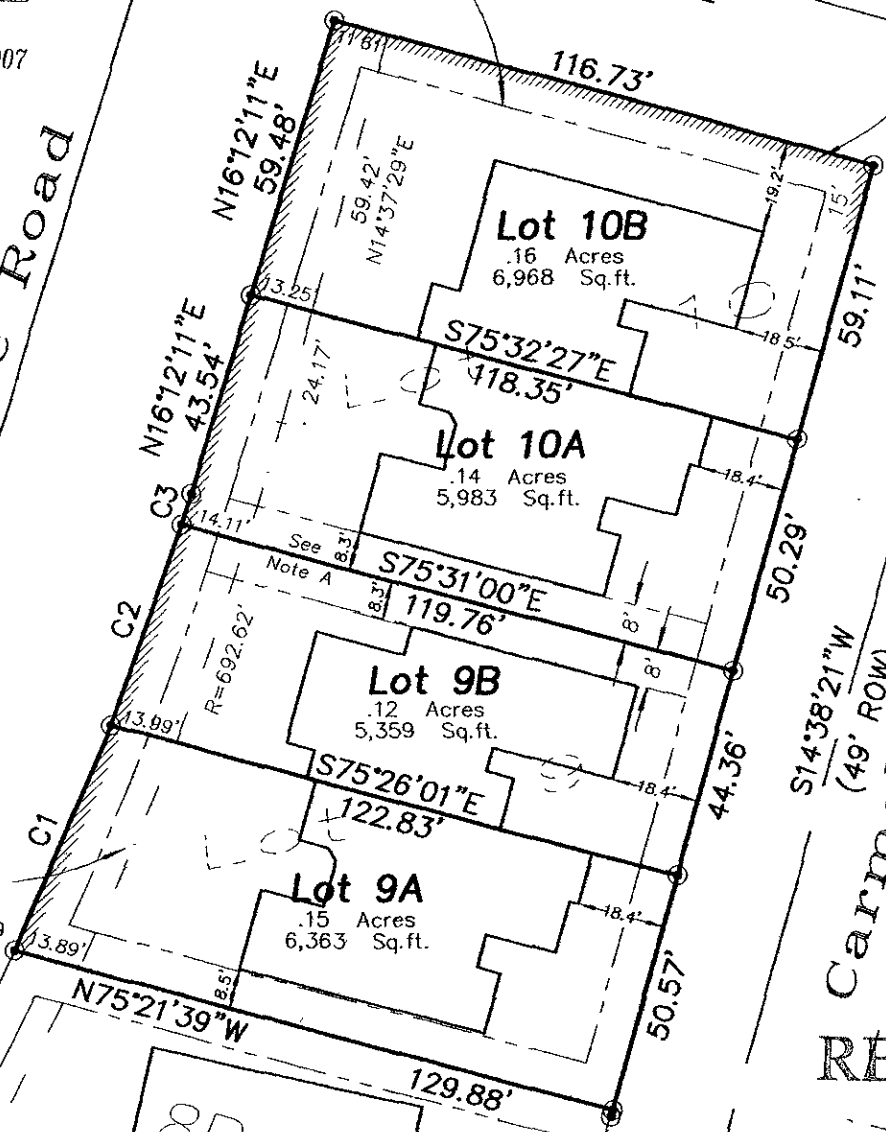
Previously Platted
 8' Wide Utility & Minor
 Drainage Easements
 Plat Book 32 Page 94

Previously Platted
 Non-Access Easement
 Plat Book 32 Page 94

Sheridan Lake Road

Heidiway Lane
 (60' ROW)
 S75°22'31"E

Carmel Point
 S14°38'21"W
 (49' ROW)



Easement for
 US West
 Communications,
 BHPL, et. al.
 Book 52 Page 9029
 Shown Plat Book
 32 Page 94

RECEIVED

MAR 30 2007

Rapid City Growth
 Management Department

PREPARED BY:
 FISK/LAND SURVEYING & CONSULTING ENGINEERS, INC.
 P.O. BOX 8154, RAPID CITY, SD 57709 (605) 348-1538 March 15, 2007

No. 03-07-02