

Public
Commission expires _____

that all taxes which are
any office, are fully paid.

City Treasurer

dated this
of _____

Director
City

y

11 / 4

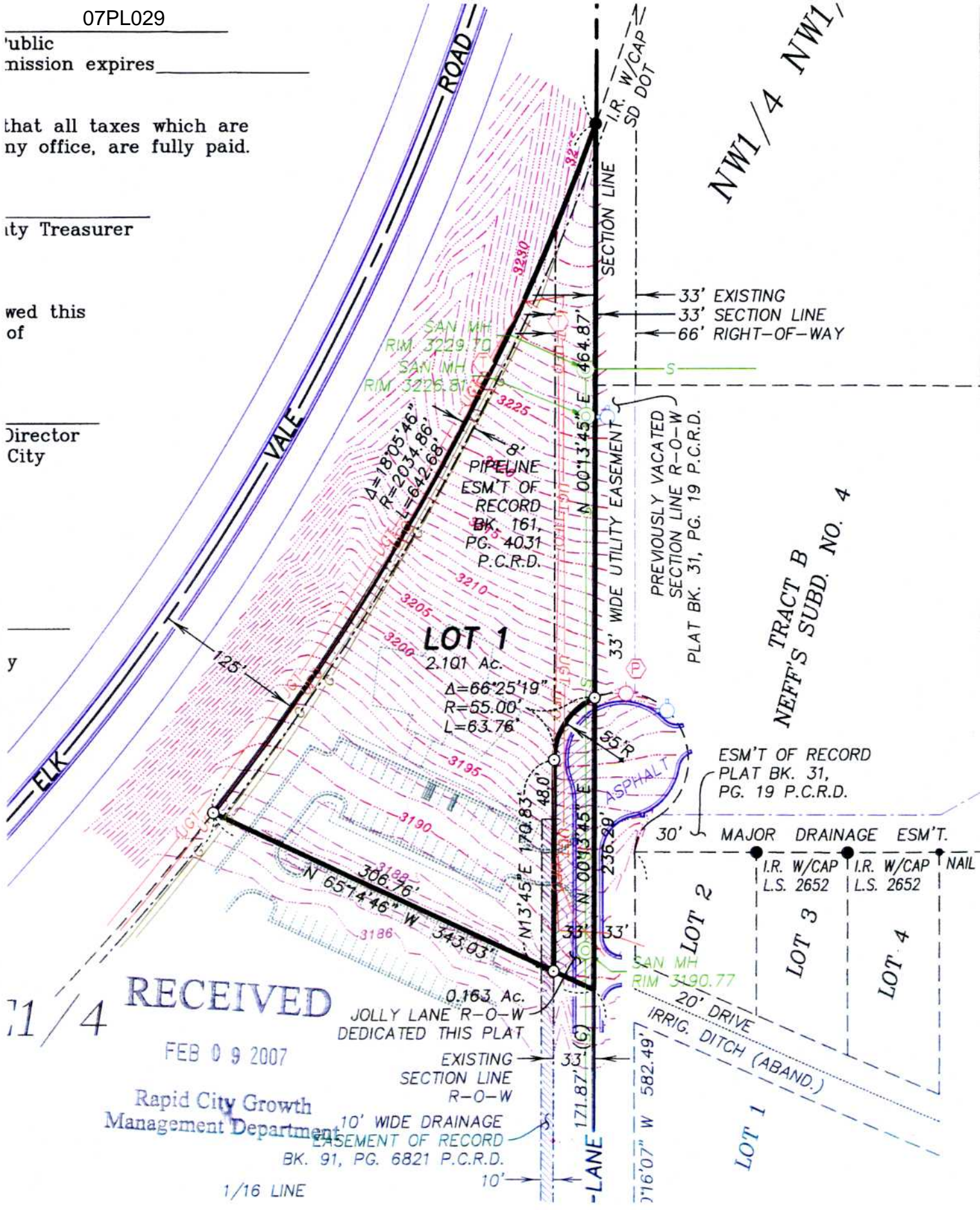
RECEIVED

FEB 09 2007

Rapid City Growth
Management Department

10' WIDE DRAINAGE
EASEMENT OF RECORD
BK. 91, PG. 6821 P.C.R.D.

1/16 LINE



NW1/4 NW1/4

SECTION LINE

33' EXISTING
33' SECTION LINE
66' RIGHT-OF-WAY

PREVIOUSLY VACATED
SECTION LINE R-O-W
PLAT BK. 31, PG. 19 P.C.R.D.

TRACT B
NEFF'S SUBD. NO. 4

ESM'T OF RECORD
PLAT BK. 31,
PG. 19 P.C.R.D.

30' MAJOR DRAINAGE ESM'T.

I.R. W/CAP L.S. 2652 I.R. W/CAP L.S. 2652 NAIL

LOT 2
LOT 3
LOT 4

IRRIG. DITCH (ABAND.)

LOT 1

-LANE

716'07" W 582.49'

EXISTING
SECTION LINE
R-O-W

0.163 Ac.
JOLLY LANE R-O-W
DEDICATED THIS PLAT

171.87' (C)

10'

SAN MH RIM 3190.77

20' DRIVE

LOT 1
2.101 Ac.
 $\Delta=66^{\circ}25'19"$
 $R=55.00'$
 $L=63.76'$

PIPELINE
ESM'T OF
RECORD
BK. 161,
PG. 4031
P.C.R.D.

$\Delta=1805'46"$
 $R=2034.86'$
 $L=642.68'$

SAN MH RIM 3229.70
SAN MH RIM 3226.81

33' WIDE UTILITY EASEMENT

33' SECTION LINE

33' SECTION LINE

33' SECTION LINE

33' SECTION LINE

33' SECTION LINE

33' SECTION LINE

33' SECTION LINE

33' SECTION LINE

33' SECTION LINE